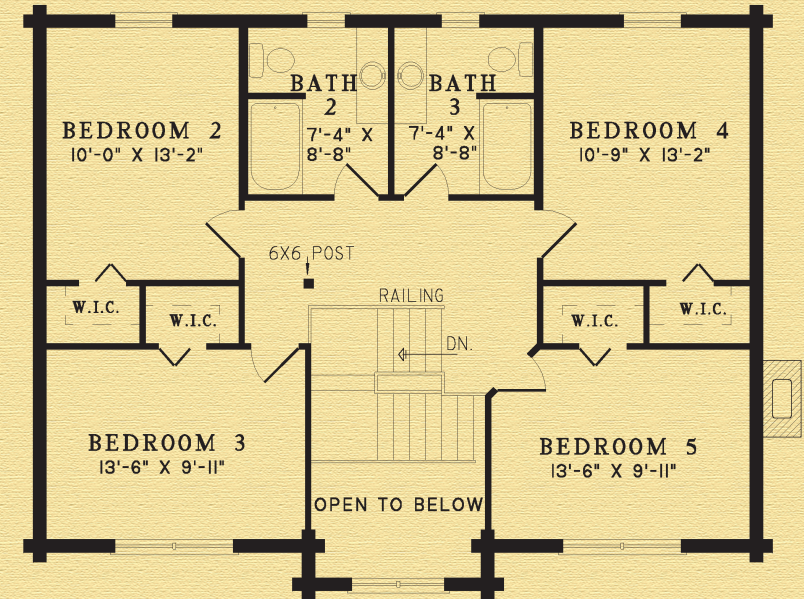
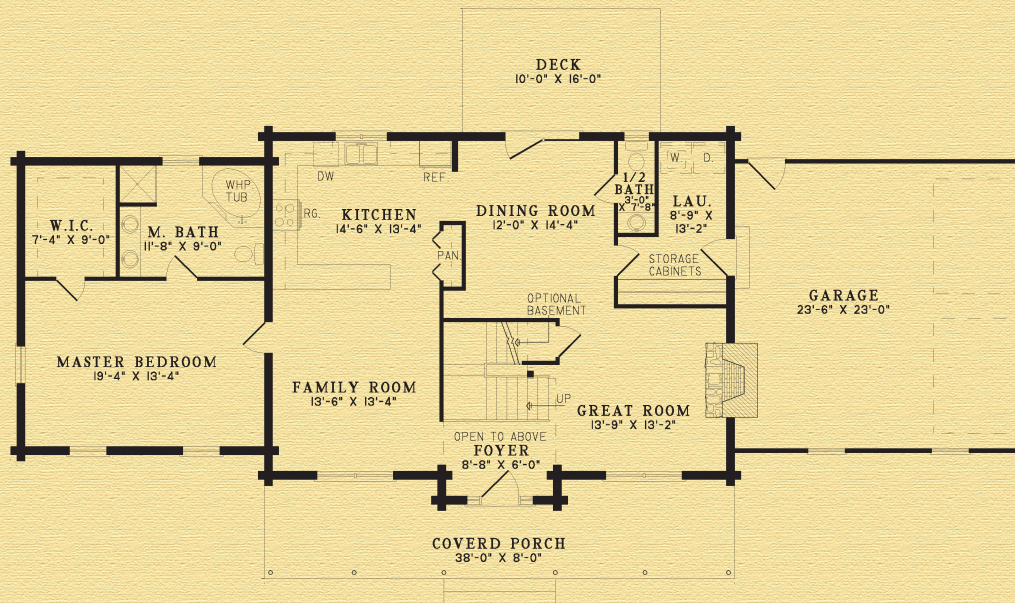


The Autumn Belle

Width: 81' 10"
 Depth: 46' 0"
 Main Floor: 1,564 sq. ft. (145 sq. meters)
 Upper Floor: 1,024 sq. ft. (95 sq. meters)
 Total Living: 2,588 sq. ft. (240 sq. meters)



Special Notes: Has 8' plus or minus upper level wall height. One half circle window included. Garage walls and gable are frame with exterior log siding or half log with corners. With heavy timber rafter system and no roof insulation.

BARNA
 Log Homes
The experience matters™