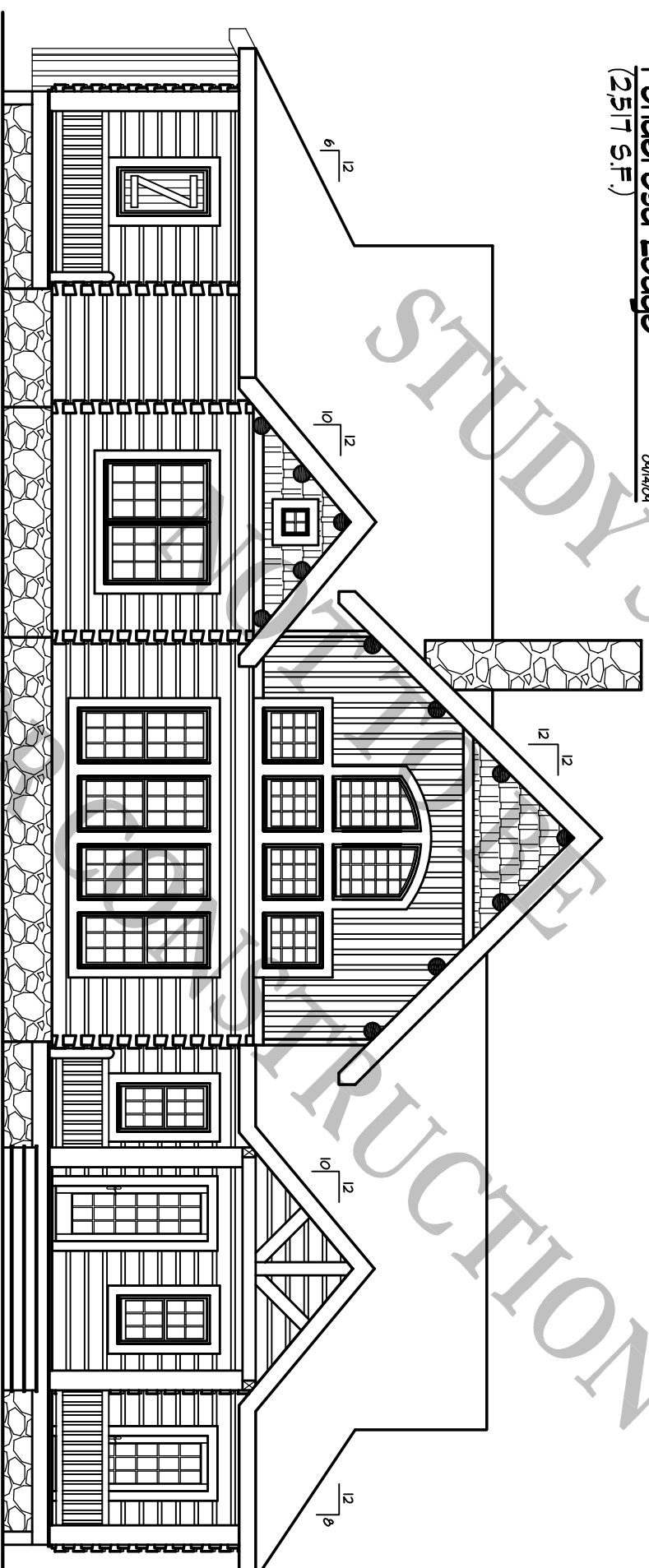


**Ponderosa Lodge**  
(2,517 S.F.)

09/14/04



**FRONT ELEVATION**

1/8" = 1'-0"

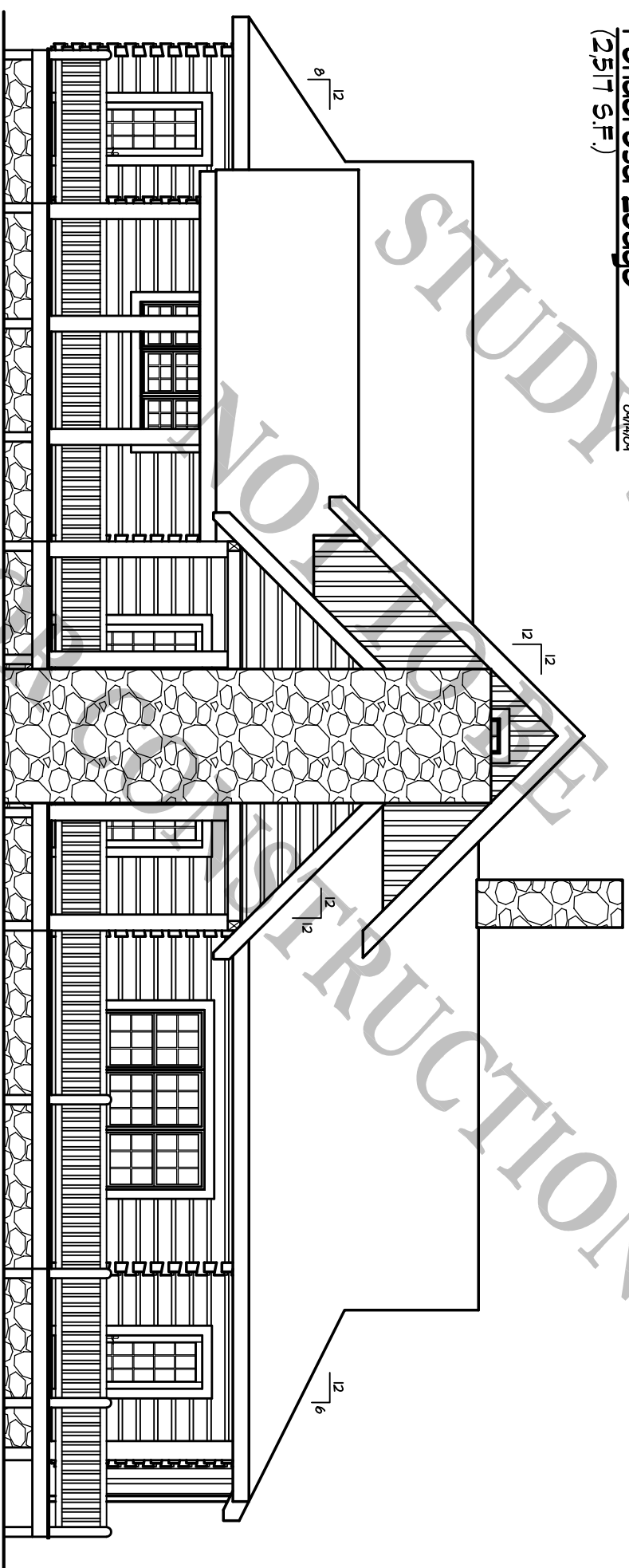
**BARNA**  
Log Homes  
of Georgia

USED FOR CONSTRUCTION STUDY SET

**Ponderosa Lodge**

(2517 S.F.)

04/14/04



**REAR ELEVATION**

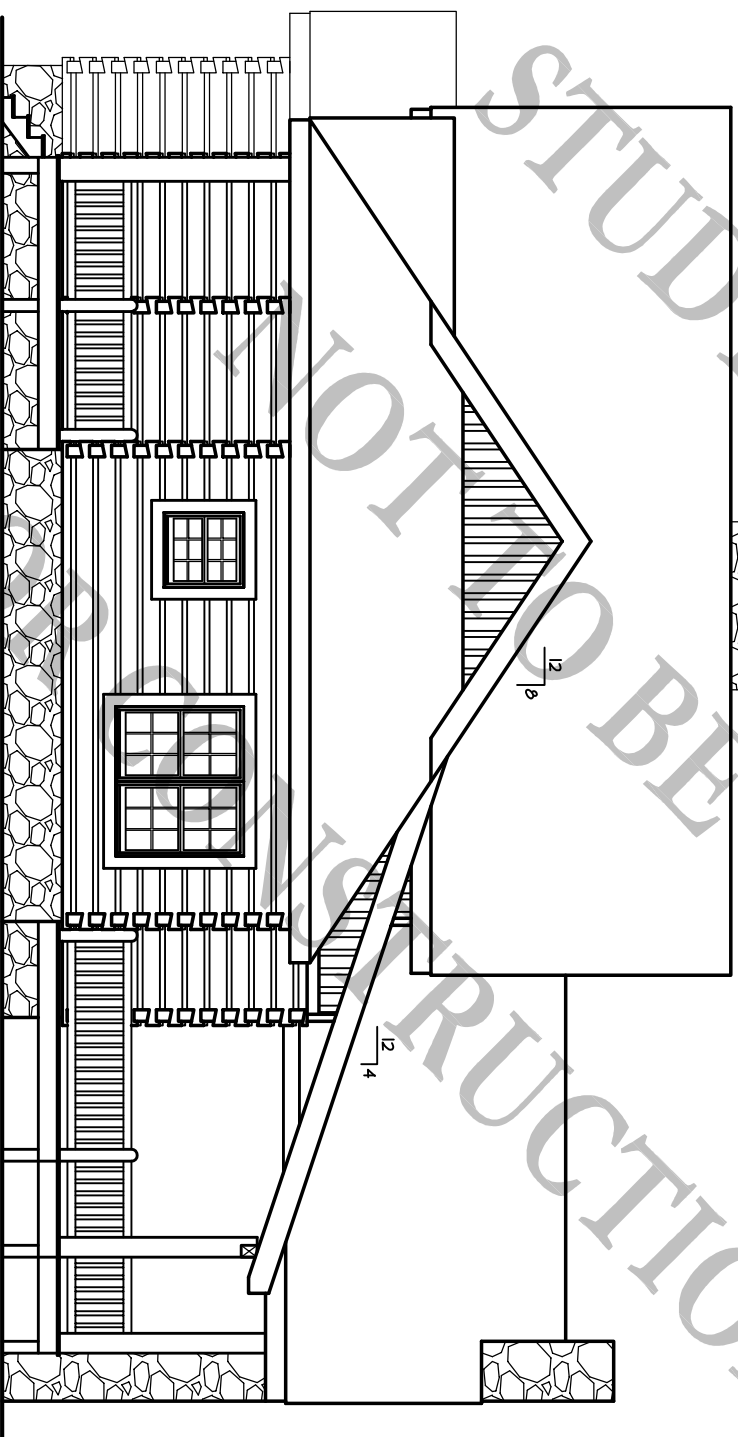
1/8" = 1'-0"

**BARNA**  
Log Homes  
of Georgia

USED FOR STUDY SET  
NO INSTRUCTION

**Ponderosa Lodge**  
(2517 S.F.)

04/14/04



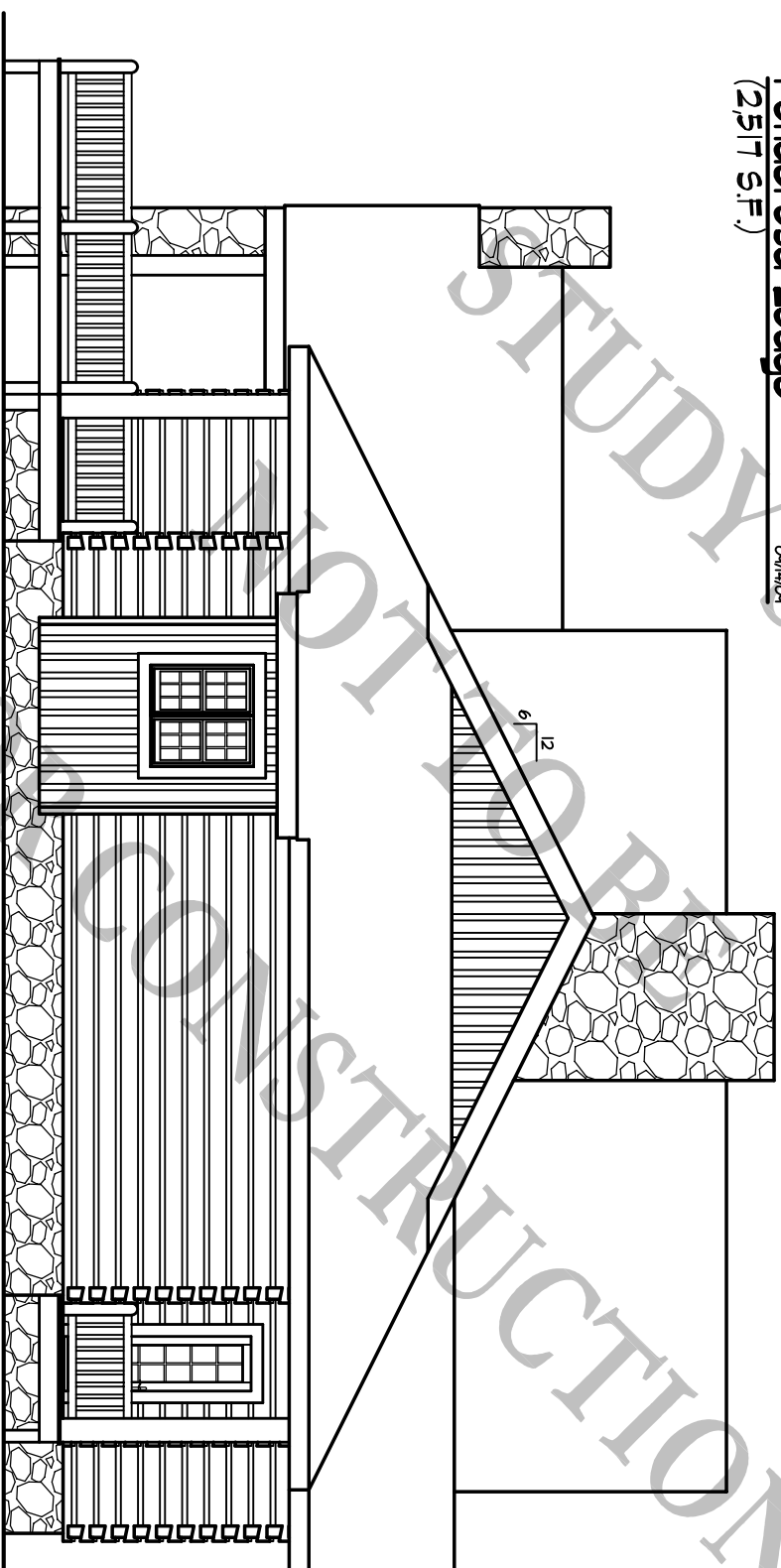
**RIGHT ELEVATION**

1/8" = 1'-0"

**BARNA**  
Log Homes  
of Georgia

**Ponderosa Lodge**  
(2517 S.F.)

04/14/09



**LEFT ELEVATION**

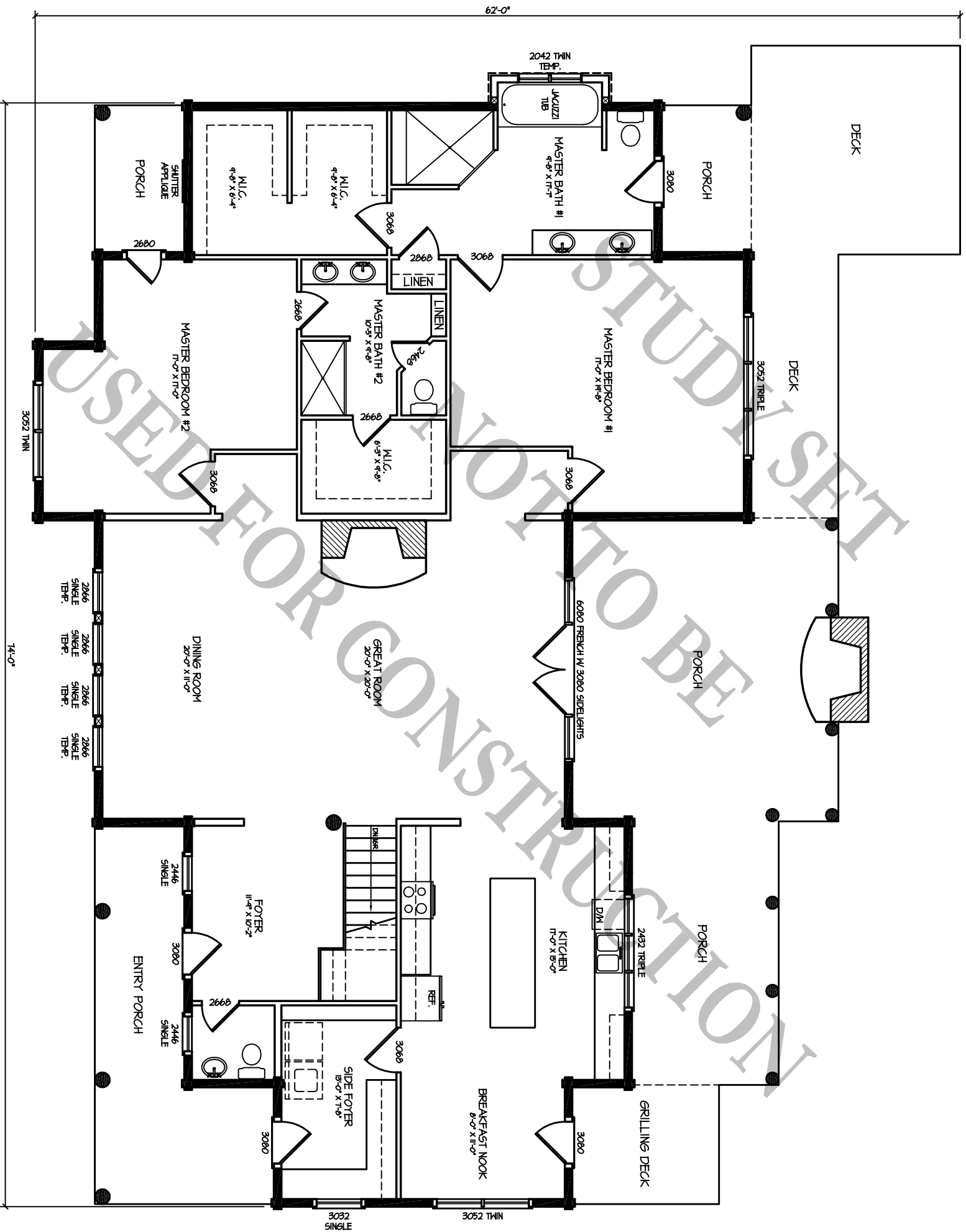
1/8" = 1'-0"

**BARNA**  
Log Homes  
of Georgia

USED FOR PHOTOGRAPHY STUDY SET  
FOR CONSTRUCTION

**Ponderosa Lodge**  
(2,517 S.F.)

09/14/04



**1st FLOOR PLAN**

1/8" = 1'-0"

**BARNA**  
Log Homes  
of Georgia