

**Appalachian Barn**  
(OPTION B) - (3,335 S.F.)

8/11/08



**FRONT ELEVATION**

1/8" = 1'-0"

**BARNA**  
Log Homes  
of Georgia

**Appalachian Barn**  
(OPTION B) - (3,335 S.F.)

8/1/08



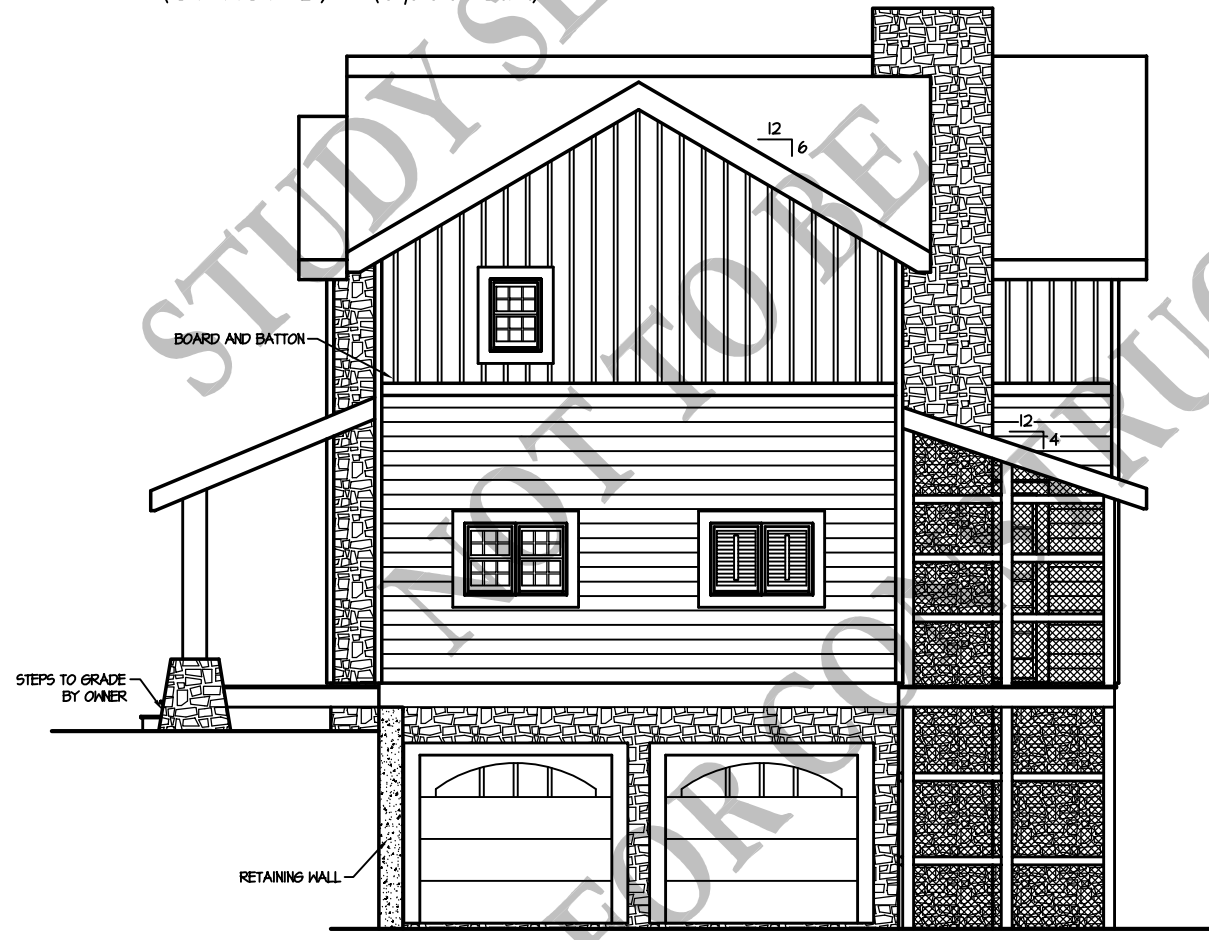
**REAR ELEVATION**

1/8" = 1'-0"

**BARNA**  
Log Homes  
of Georgia

**Appalachian Barn**  
(OPTION B) - (3,335 S.F.)

8/1/08

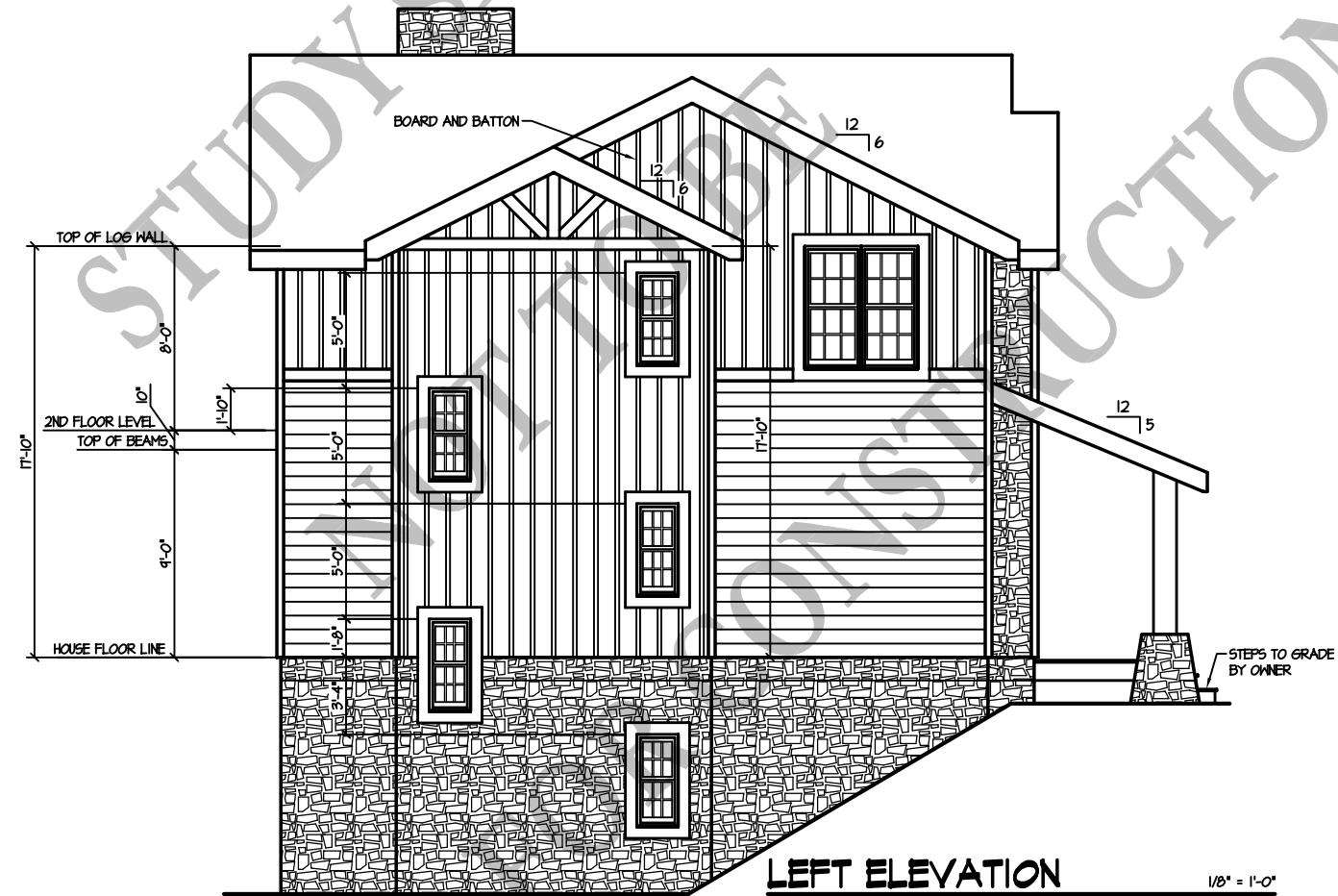


**RIGHT ELEVATION** 1/8" = 1'-0"

**BARNA**  
Log Homes  
of Georgia

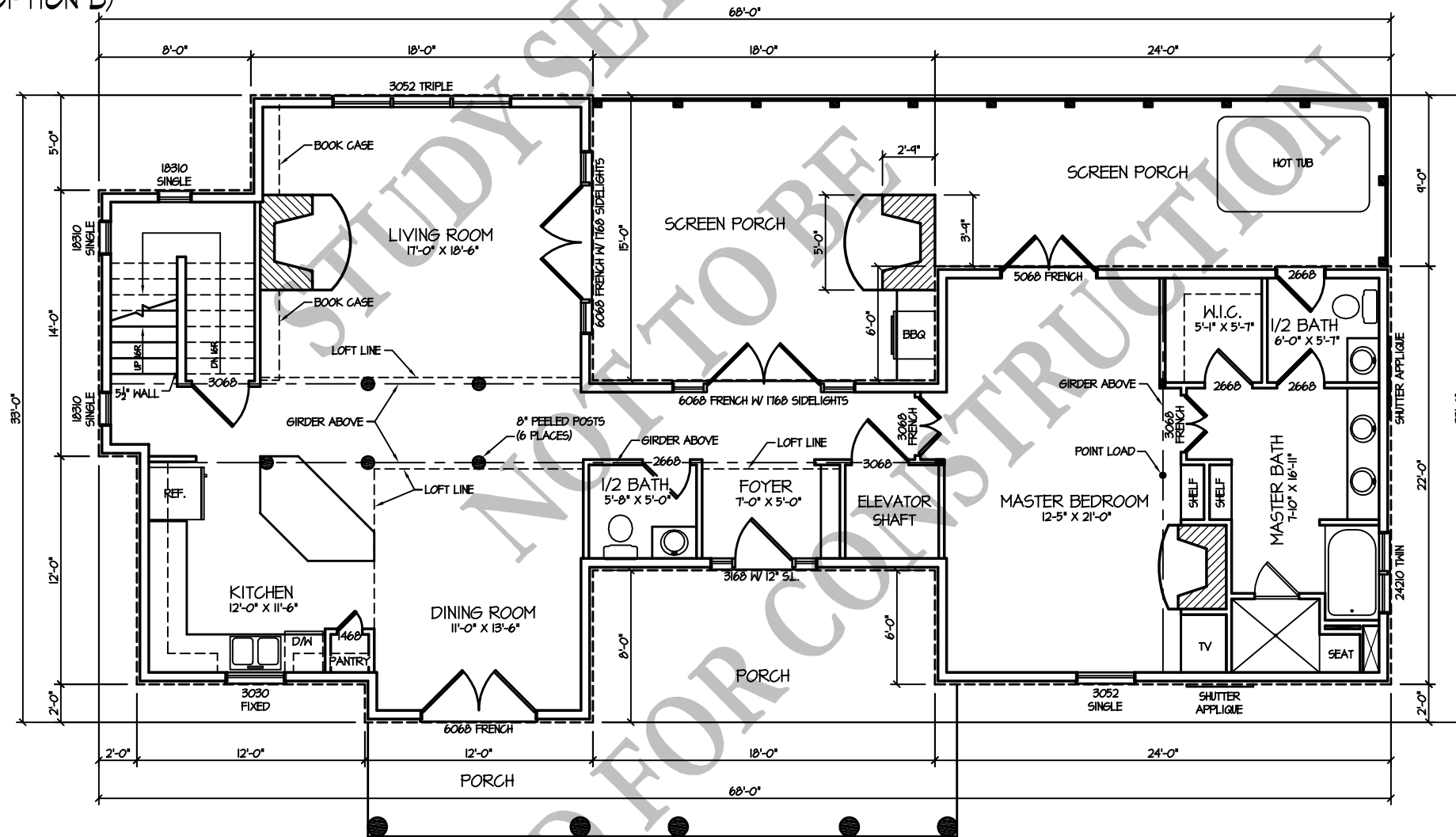
Appalachian Barn  
(OPTION B) - (3,335 S.F.)

8/1/08



**BARNA**  
Log Homes  
of Georgia

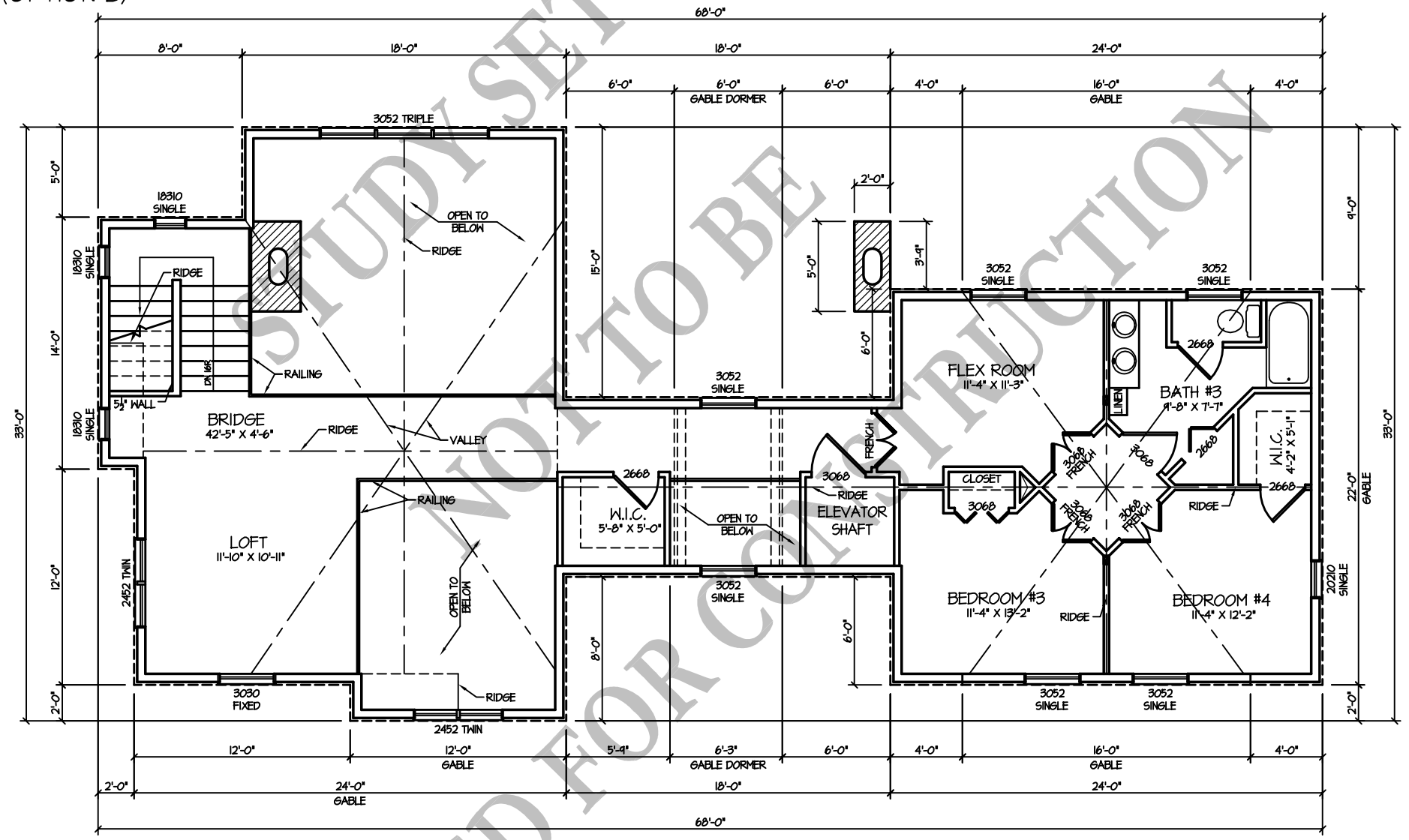
**Appalachian Barn**  
 (OPTION B) 8/1/08



**1st FLOOR PLAN**  
 (1,474 S.F.) 1/8" = 1'-0"

**BARNA**  
 Log Homes  
 of Georgia

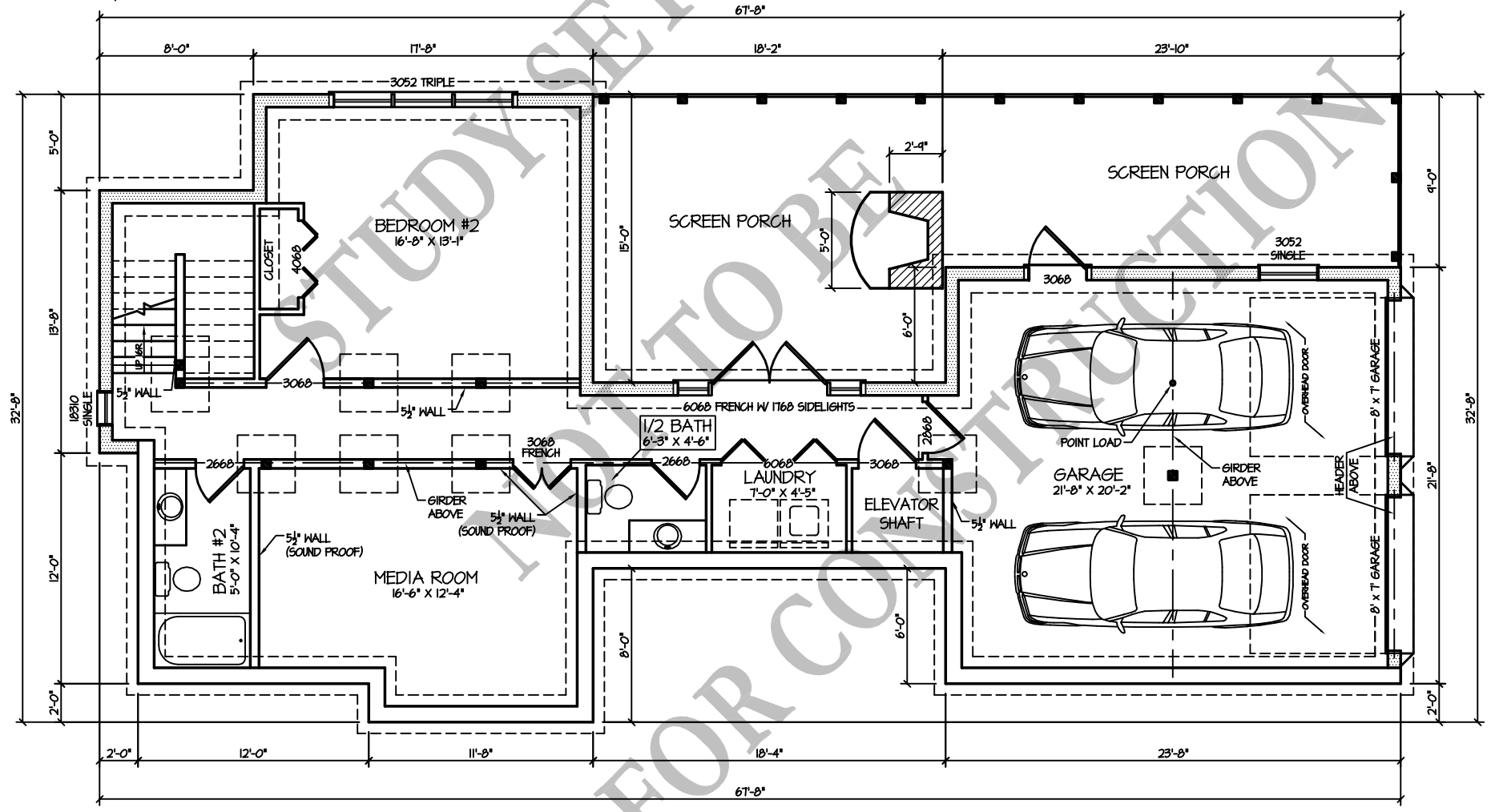
**Appalachian Barn**  
 (OPTION B) 8/1/08



**2nd FLOOR PLAN**  
 (939 S.F.) 1/8" = 1'-0"

**BARNA**  
 Log Homes  
 of Georgia

**Appalachian Barn**  
 (OPTION B) 8/1/08



**FOUNDATION**  
 (TERRACE LEVEL) - (922 FINISHED S.F.)  
 (514 UNFINISHED S.F.) 1/8" = 1'-0"

**BARNA**  
 Log Homes  
 of Georgia