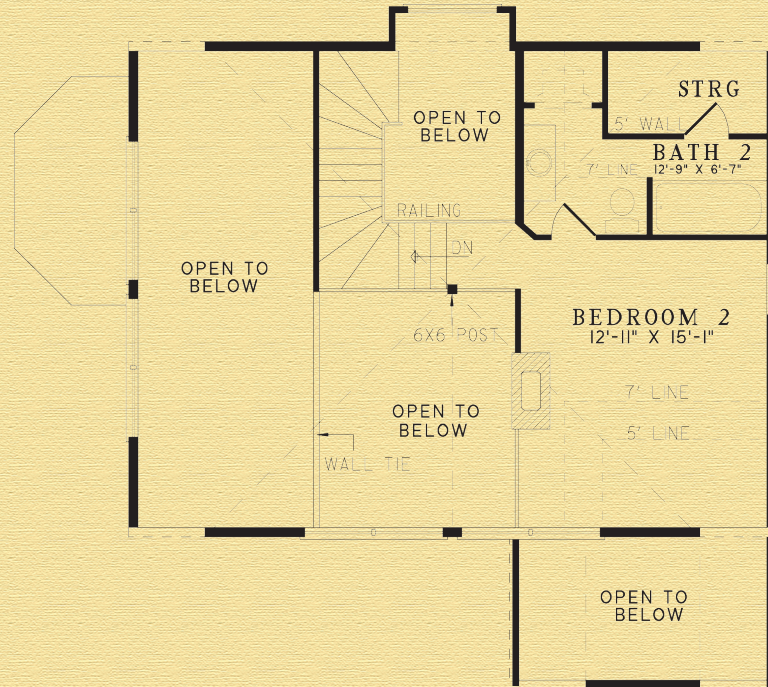


The Baxter



| | |
|---------------|--------------------------------|
| Width: | 39' 10" |
| Depth: | 39' 8" |
| Main Floor: | 1,059 sq. ft. (98 sq. meters) |
| Upper Floor: | 390 sq. ft. (36 sq. meters) |
| Total Living: | 1,449 sq. ft. (134 sq. meters) |

BARNA
Log Homes

The experience matters™

Special Note: Log turret. Upper bathroom has been revised from this plan. Log Siding or half log with corners is included for exterior of upper bump out. 2020 casements and one half circle included