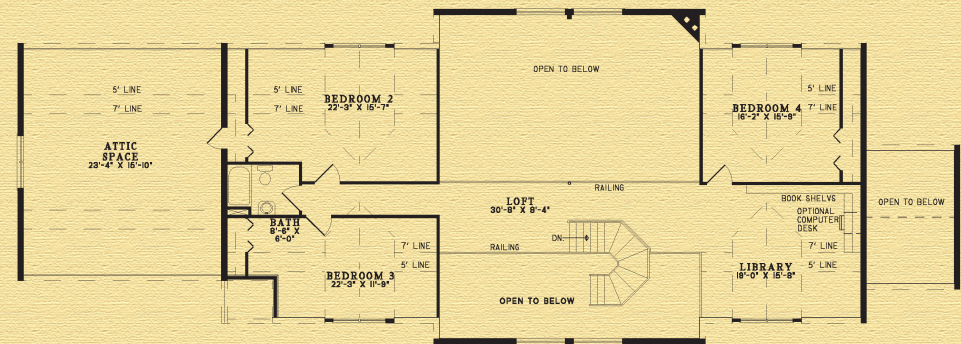
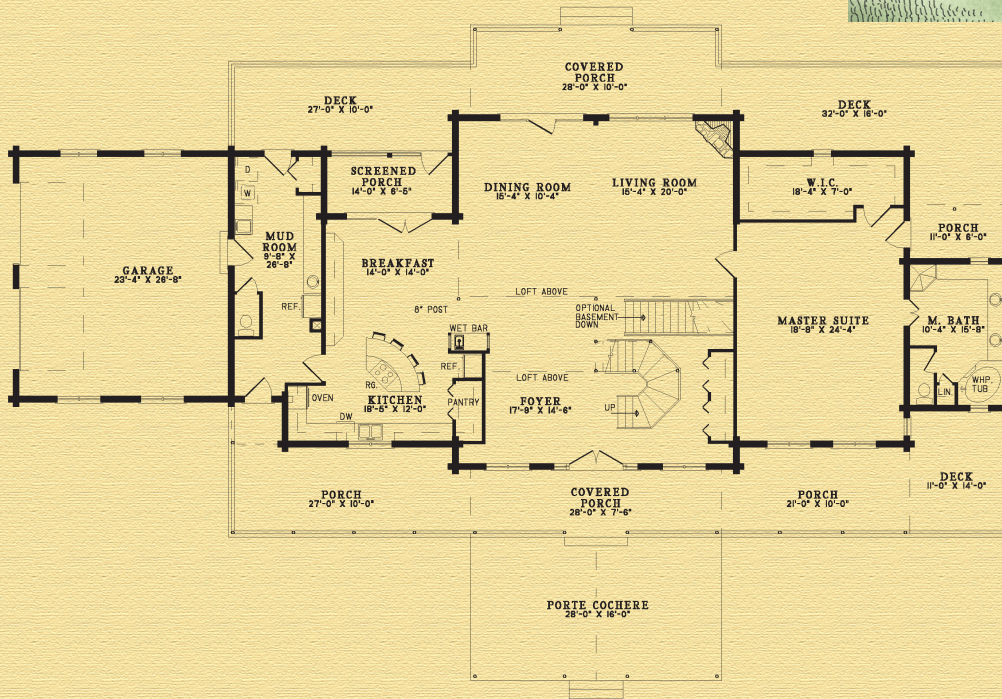


The Bradford

Width: 111' 0"
 Depth: 73' 0"
 Main Floor: 2,775 sq. ft. (258 sq. meters)
 Upper Floor: 1,767 sq. ft. (164 sq. meters)
 Total Living: 4,542 sq. ft. (422 sq. meters)



Special Notes: Five full log gables in Gold option. Four half circle arches and four quarter circle arches included. Garage has 2x floor joists with OSB and a heavy timber insulated roof.

BARNA

Log Homes

The experience matters™