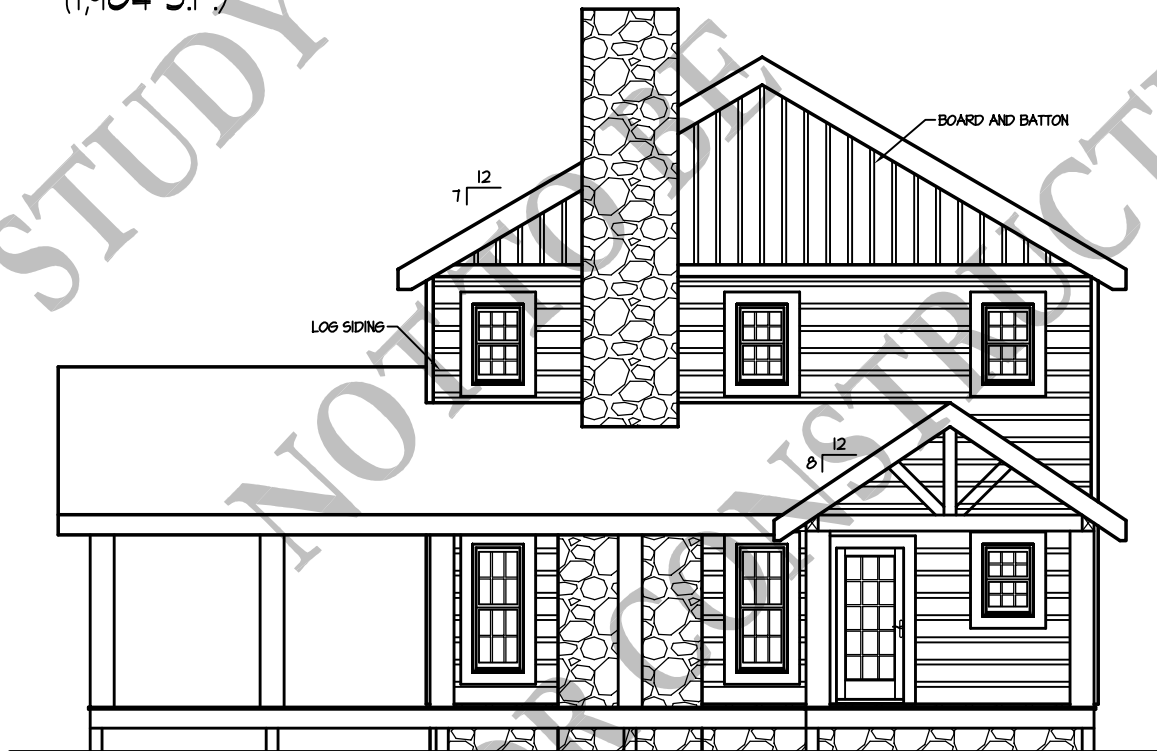


Bryson Cabin
(1,904 S.F.)

8/11/08



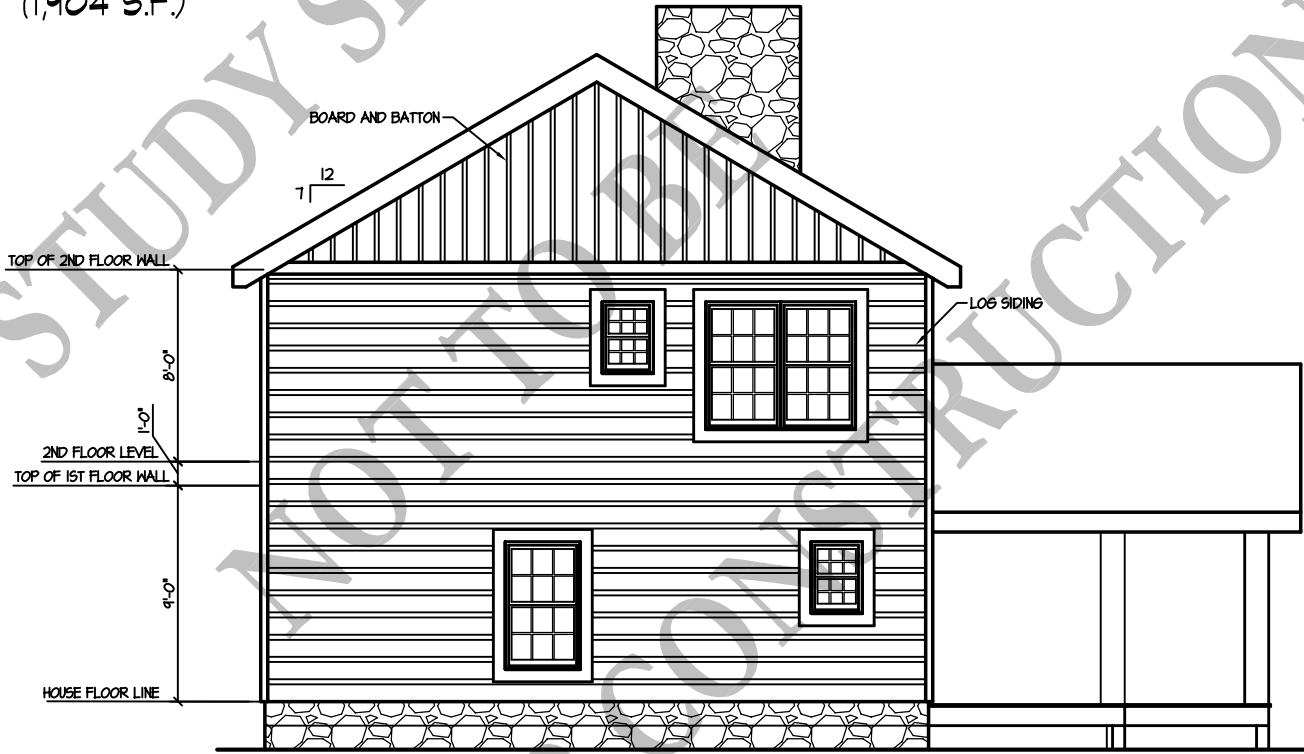
FRONT ELEVATION

1/8" = 1'-0"

BARNA
Log Homes
of Georgia

Bryson Cabin
(1,904 S.F.)

8/11/08



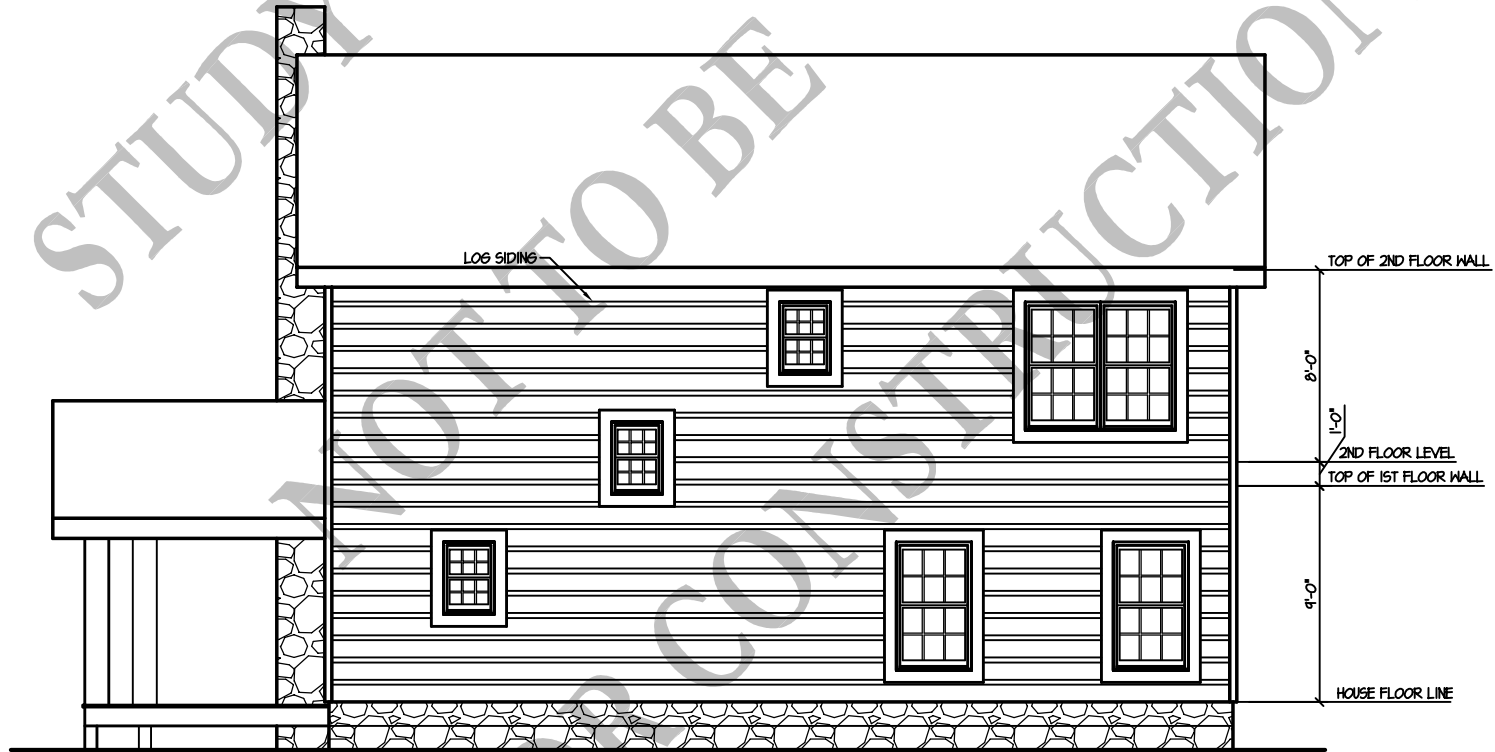
REAR ELEVATION

1/8" = 1'-0"

BARNA
Log Homes
of Georgia

Bryson Cabin
(1,904 S.F.)

8/11/08



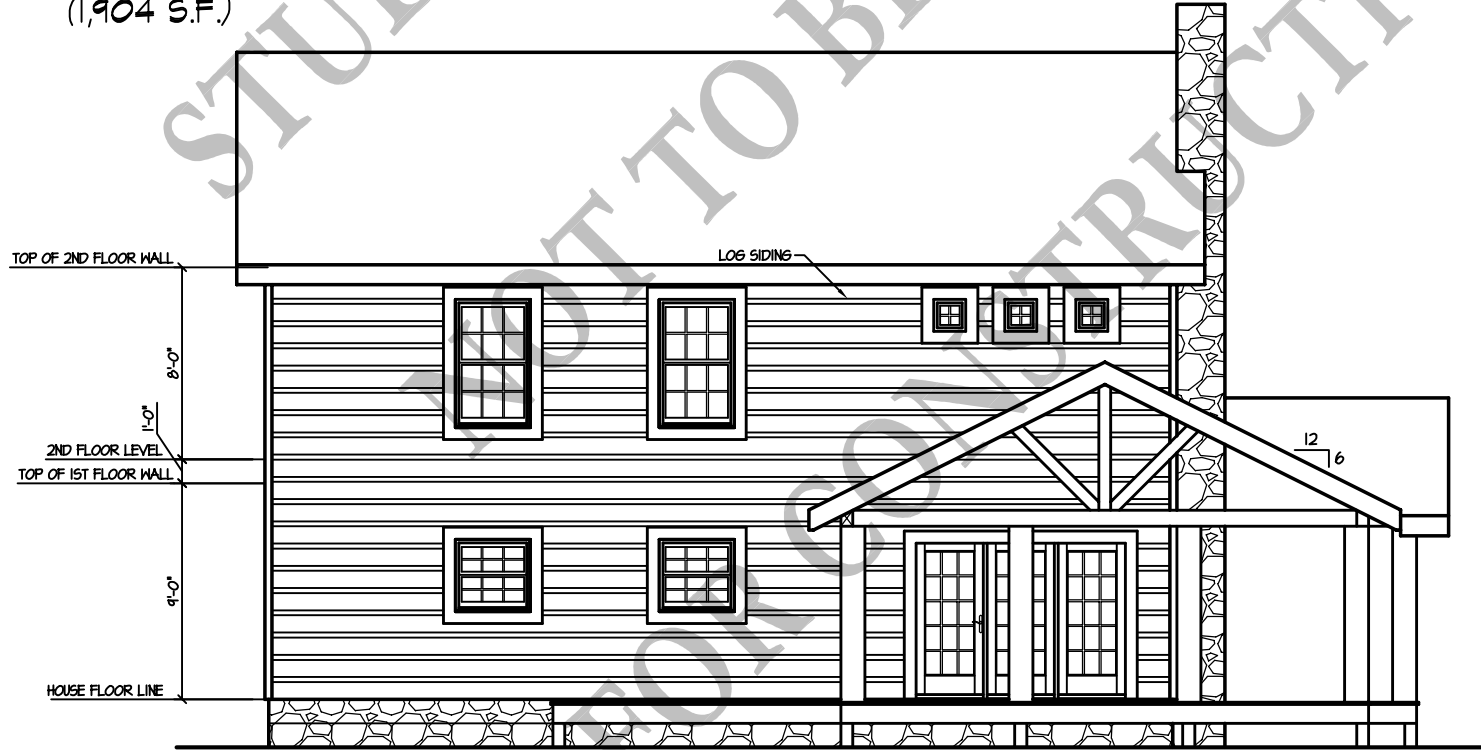
RIGHT ELEVATION

1/8" = 1'-0"

BARNA
Log Homes
of Georgia

Bryson Cabin
(1,904 S.F.)

8/11/08



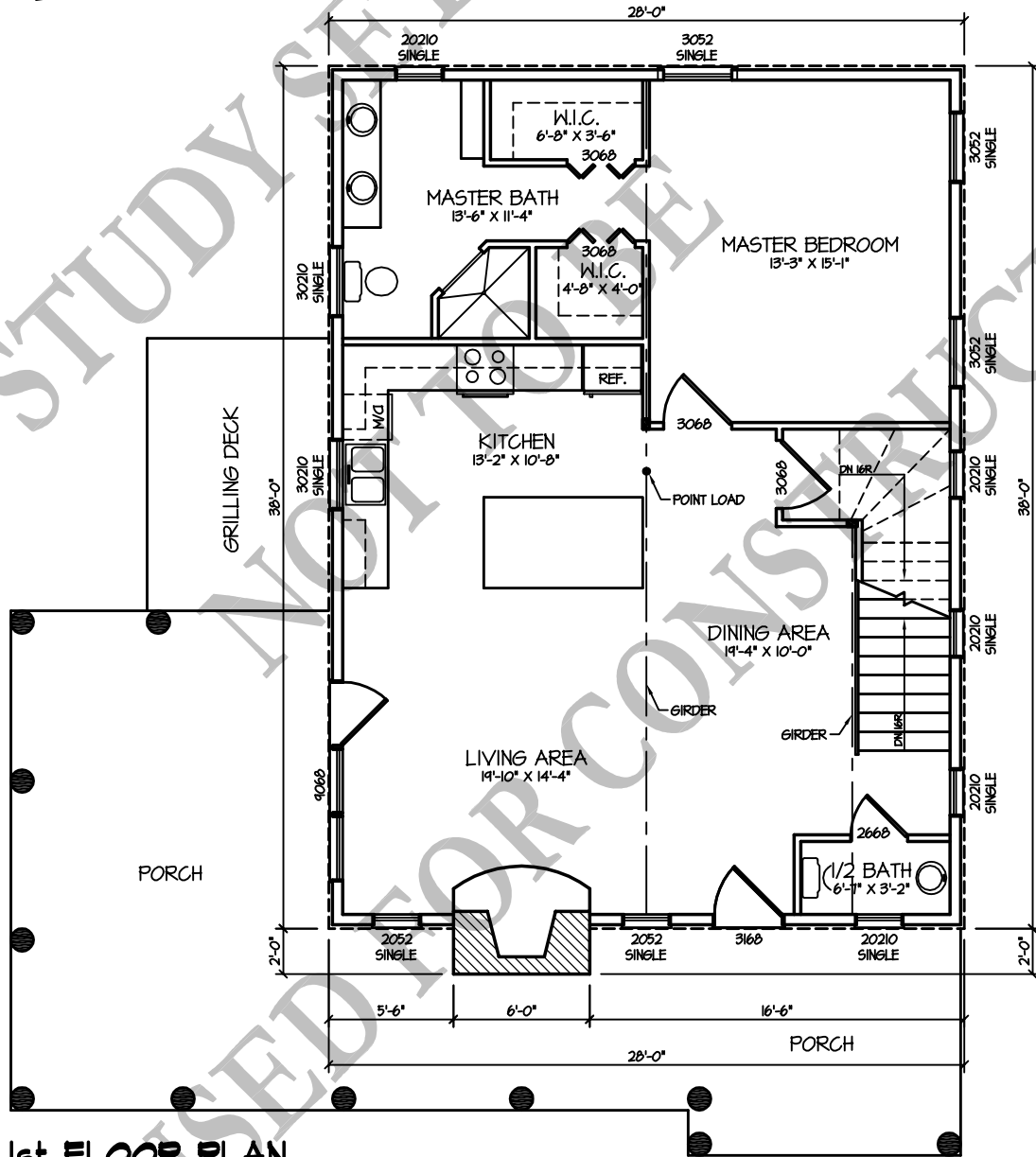
LEFT ELEVATION

$1/8" = 1'-0"$

BARNA
Log Homes
of Georgia

Bryson Cabin

8/11/08

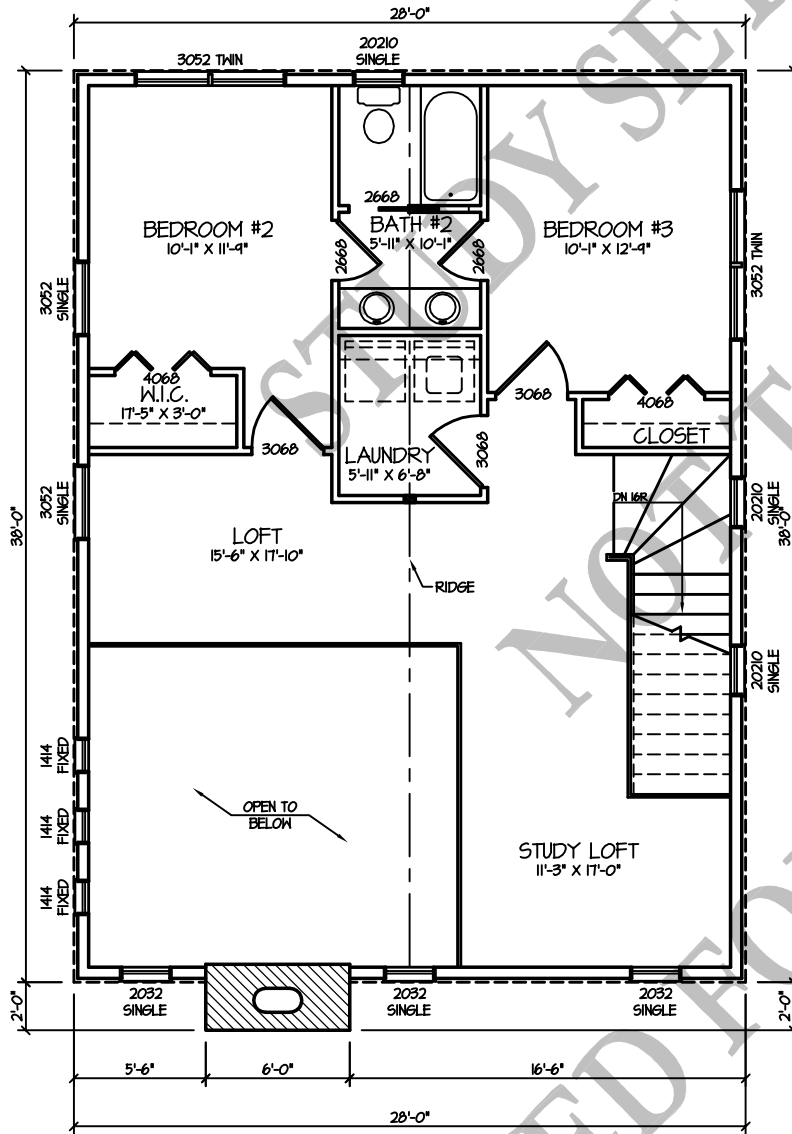


1st FLOOR PLAN
(1,064 S.F.)

1/8" = 1'-0"

Bryson Cabin

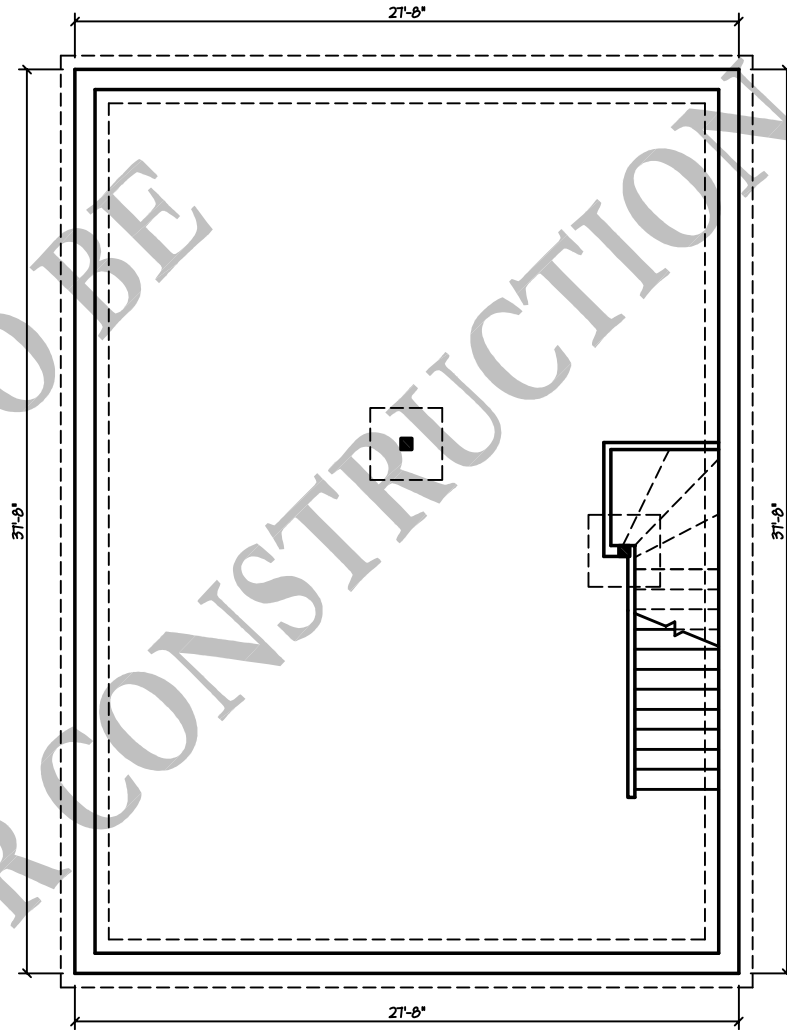
8/11/08



2nd FLOOR PLAN

(840 S.F.)

1/8" = 1'-0"



FOUNDATION

(TERRACE LEVEL) - (1,042 S.F.)

1/8" = 1'-0"

BARNA
Log Homes
of Georgia