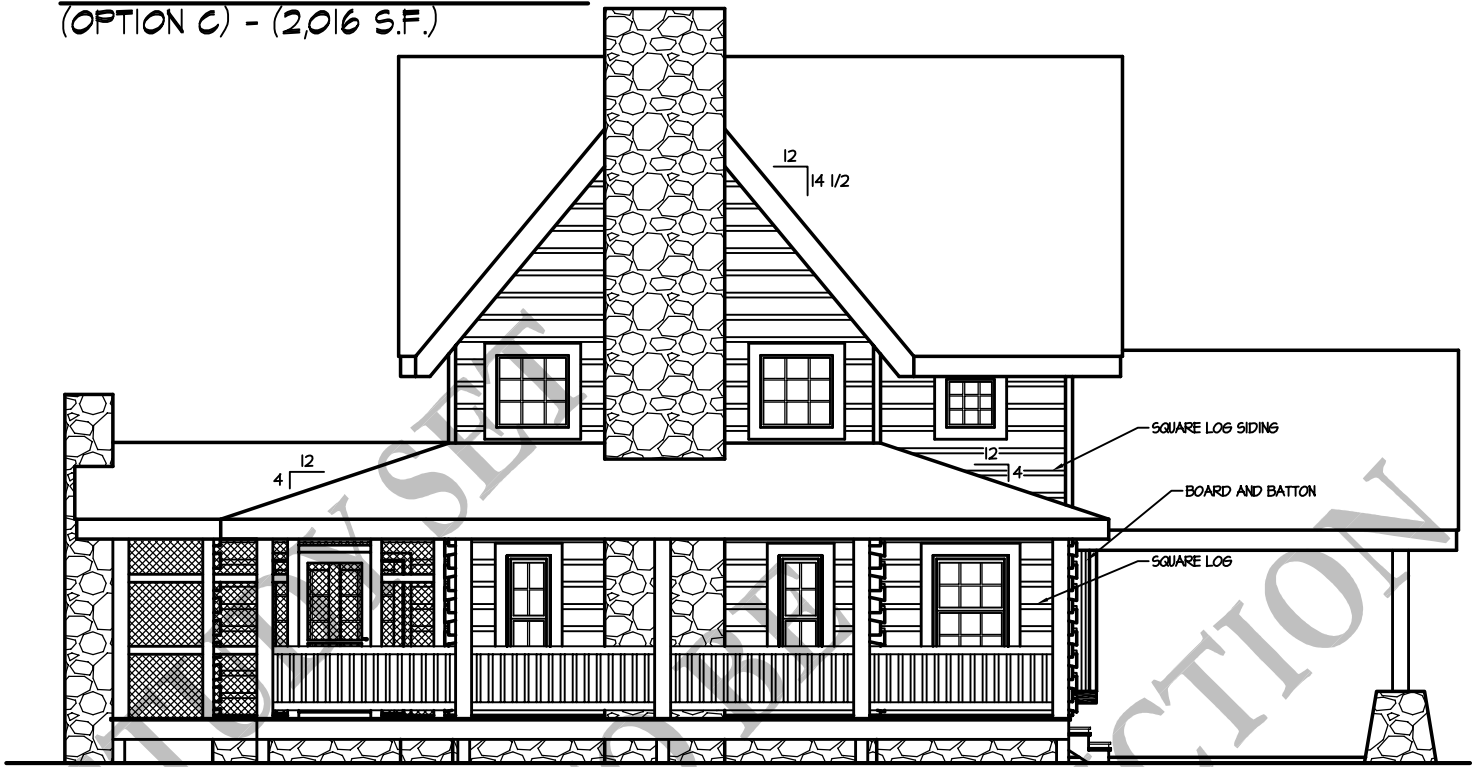


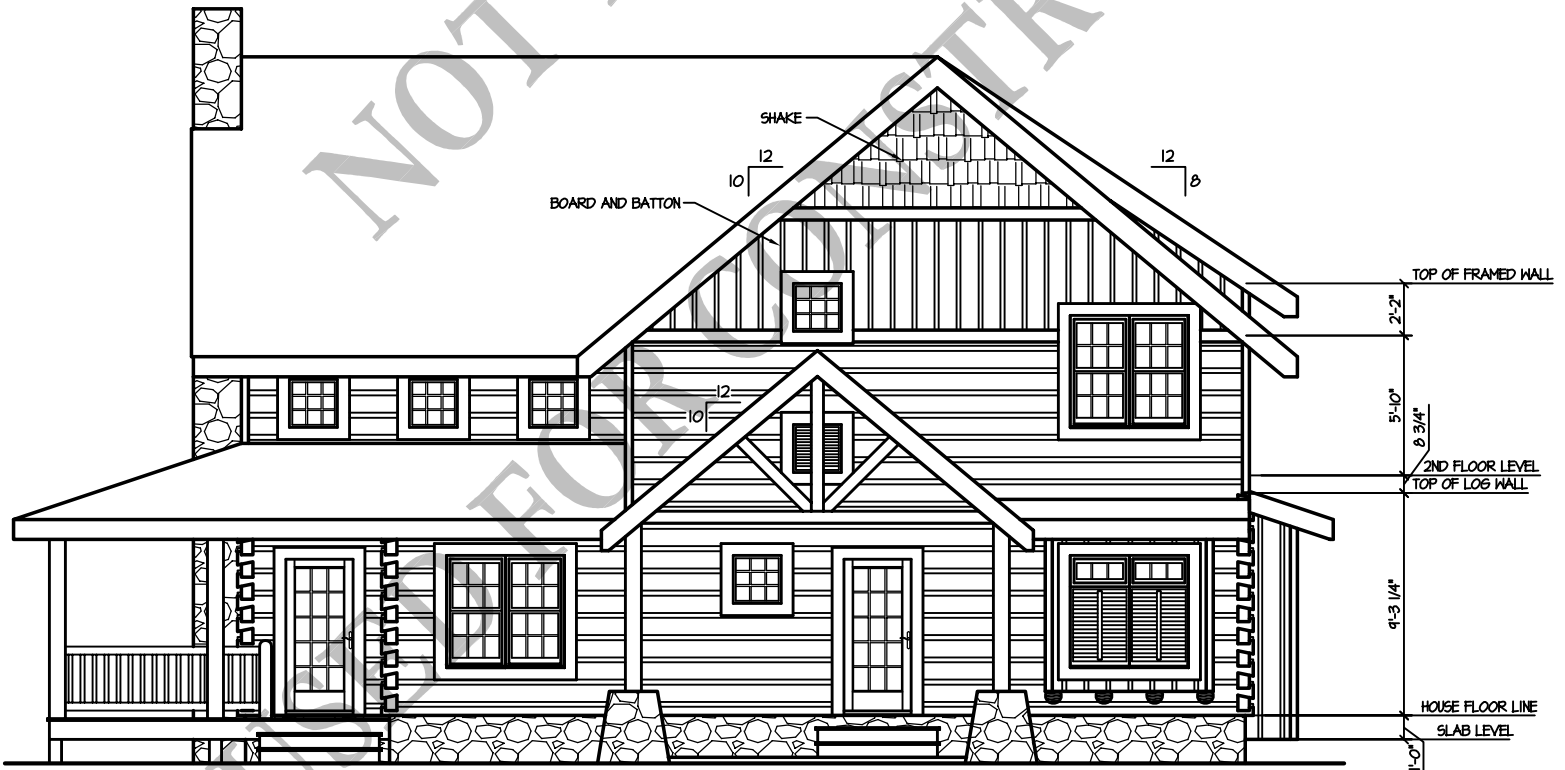
Buckhead Cabin
 (OPTION C) - (2,016 S.F.)

08/14/09



FRONT ELEVATION

1/8" = 1'-0"



RIGHT ELEVATION

1/8" = 1'-0"

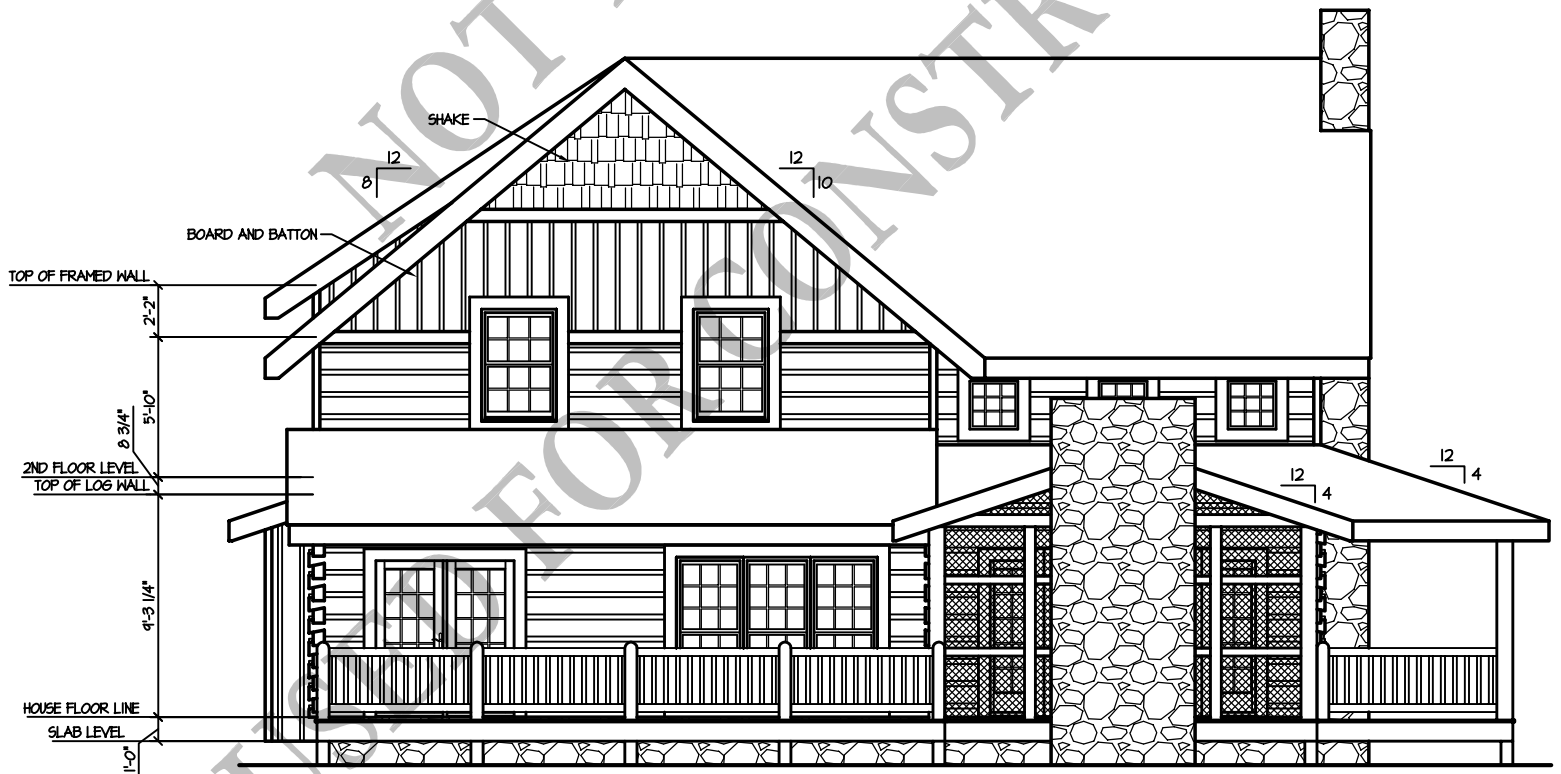
Buckhead Cabin

(OPTION C) - (2,016 S.F.)

08/14/09



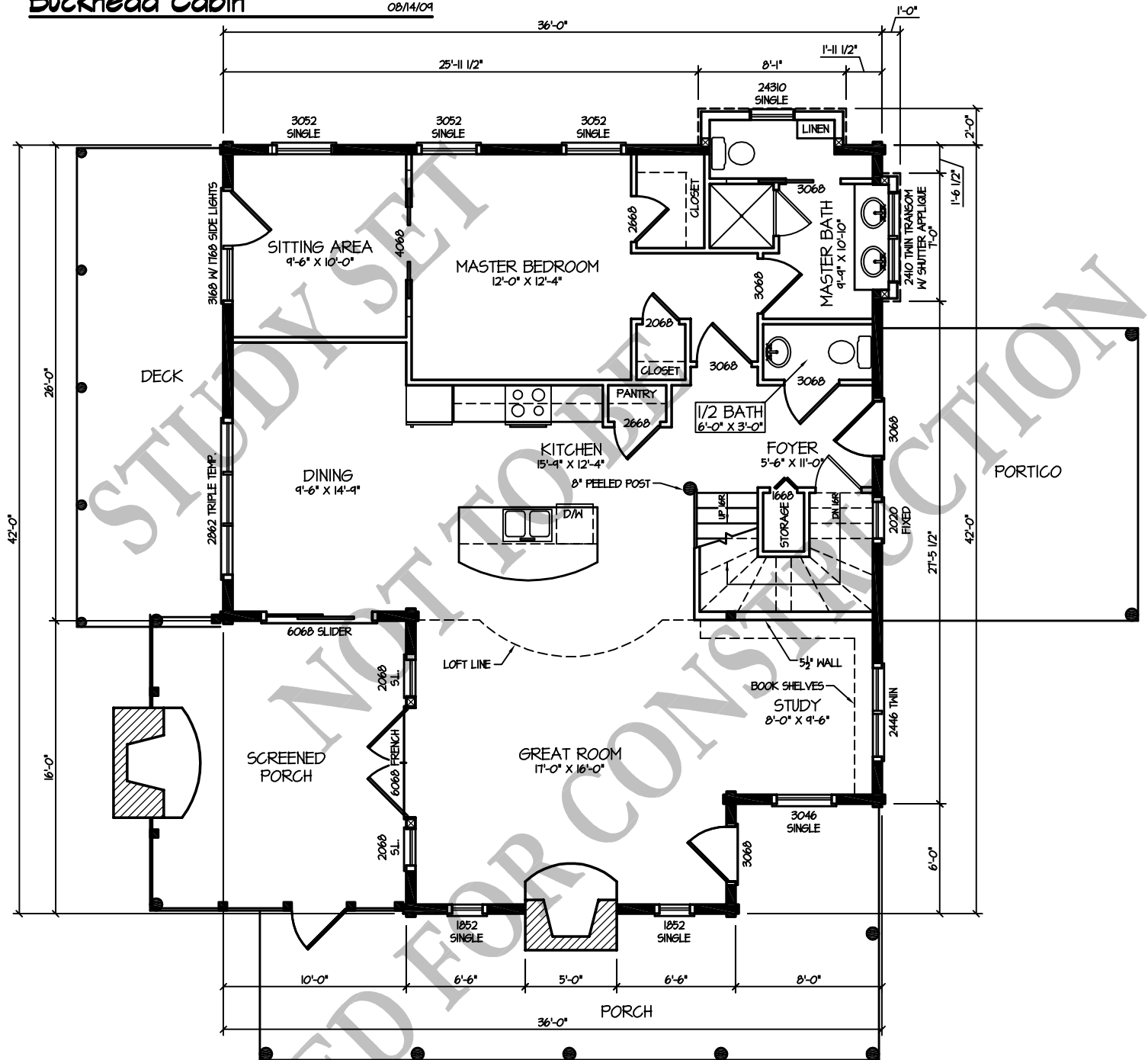
REAR ELEVATION $1/8" = 1'-0"$



LEFT ELEVATION $1/8" = 1'-0"$

Buckhead Cabin

08/14/09

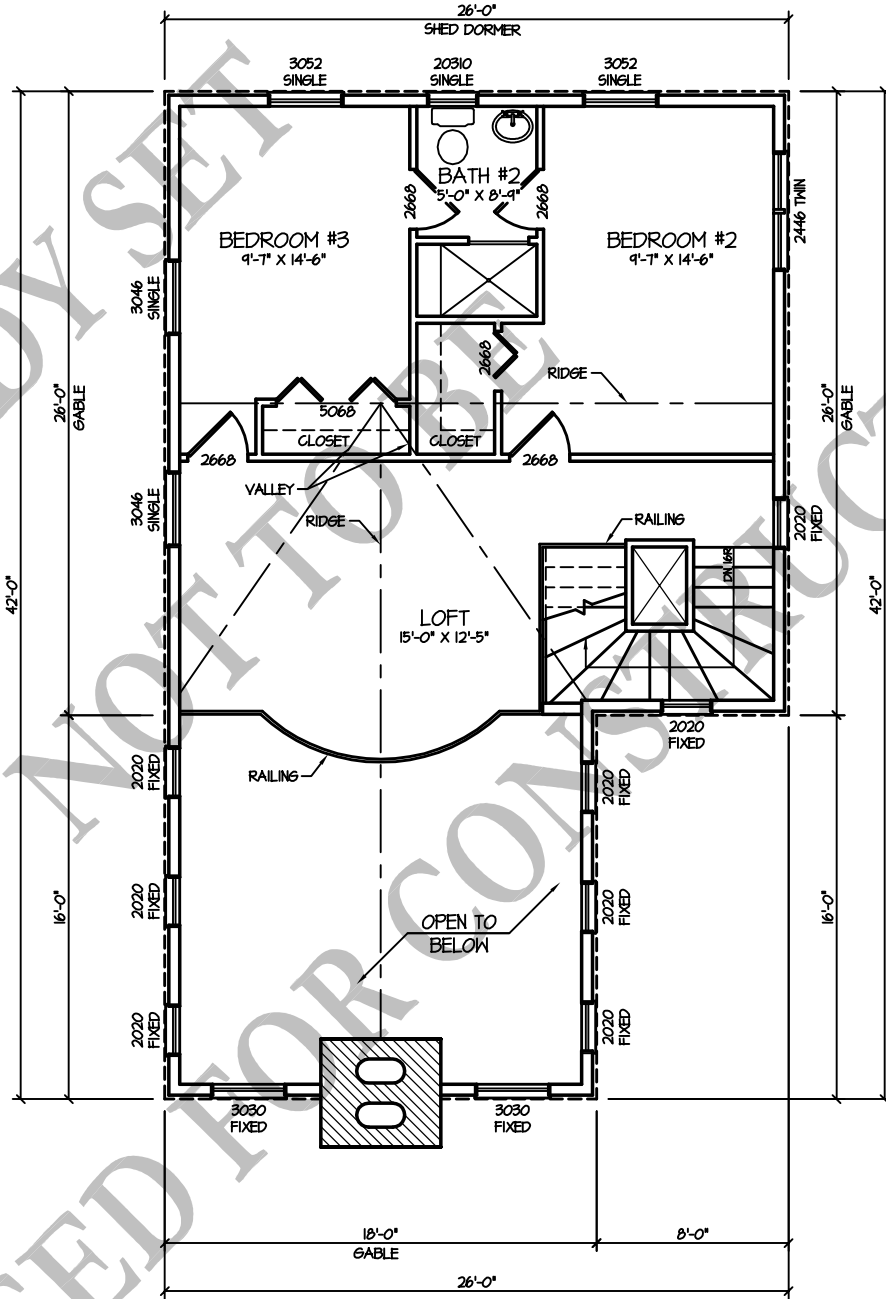


1st FLOOR PLAN
(OPTION C) - (1,327 S.F.)

1/8" = 1'-0"

Buckhead Cabin

08/14/09



2nd FLOOR PLAN

(OPTION C) - (689 S.F.)

1/8" = 1'-0"