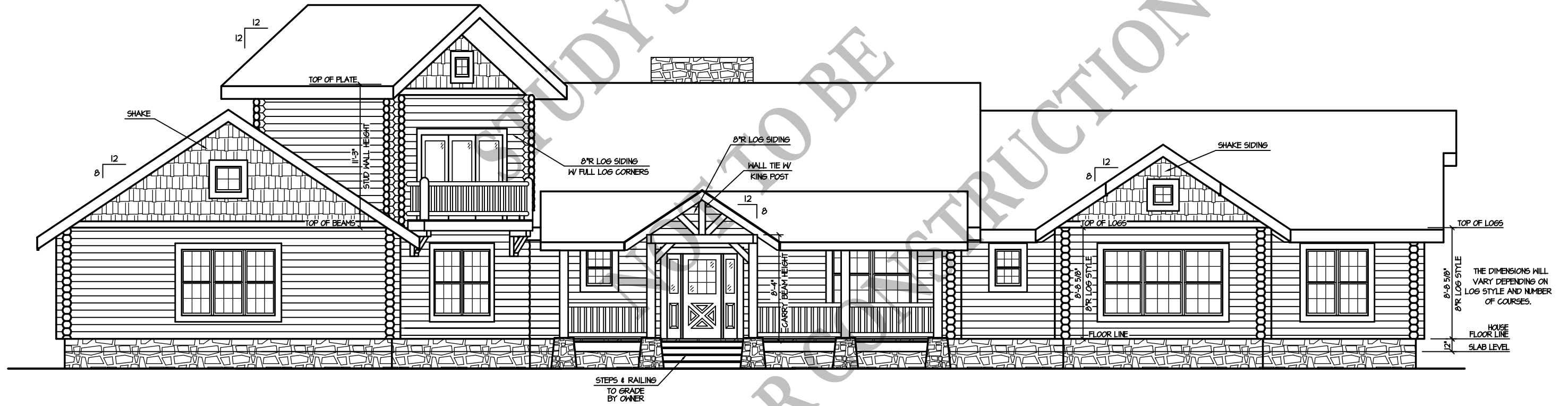


**Cumberland Breaks**      01/14/04  
(2,859 S.F.)



**FRONT ELEVATION**

1/8" = 1'-0"

**BARNA**  
**Log Homes**  
of Georgia

**Cumberland Breaks**  
 (2,859 S.F.)

01/14/09



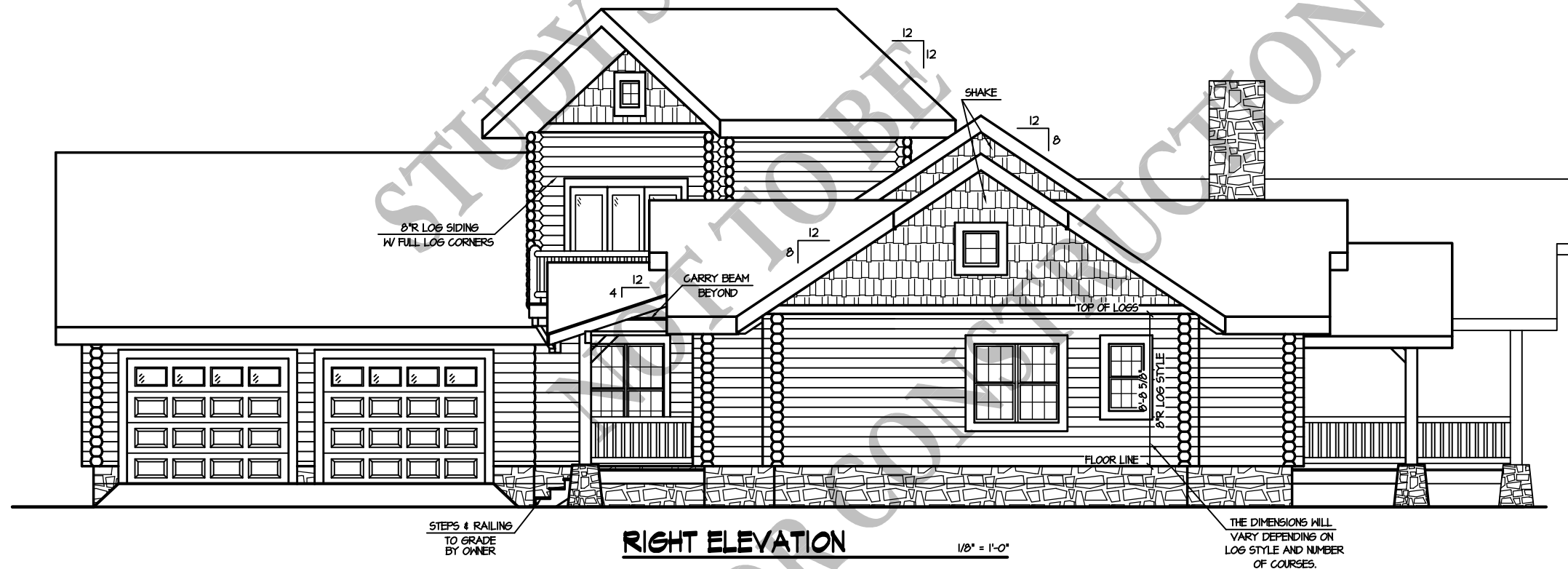
THE DIMENSIONS WILL VARY DEPENDING ON LOG STYLE AND NUMBER OF COURSES.

**REAR ELEVATION**  $1/8" = 1'-0"$

**BARNA**  
 Log Homes  
 of Georgia

**Cumberland Breaks**  
(2,859 S.F.)

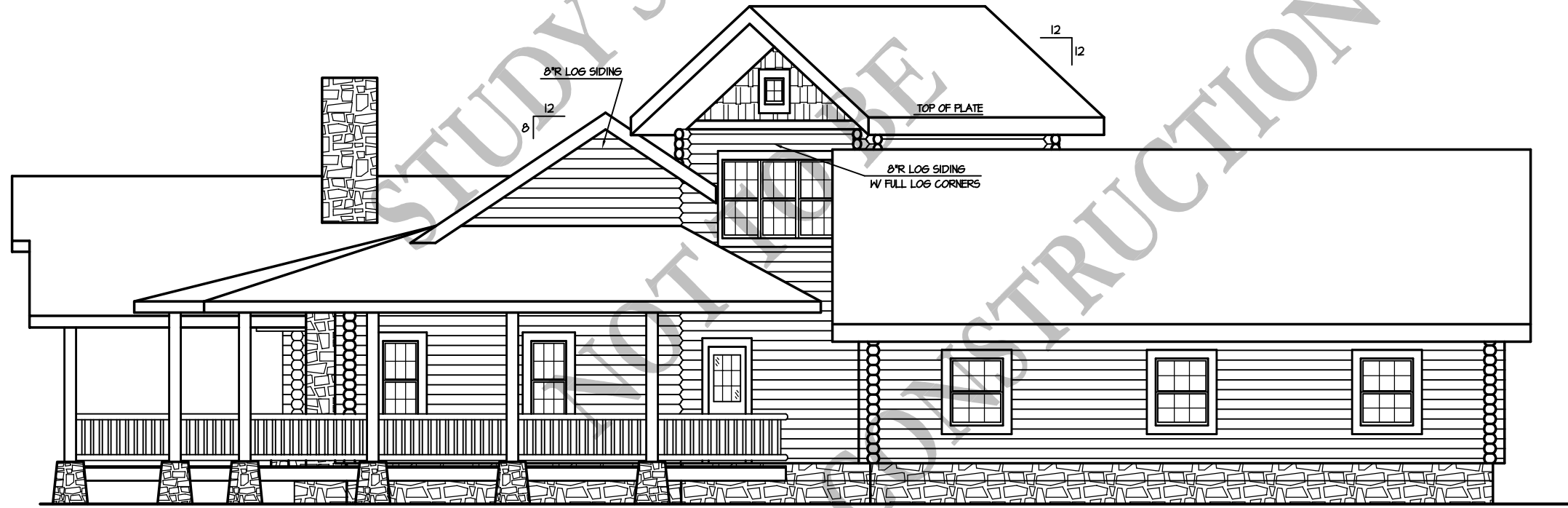
01/14/09



**BARNA**  
Log Homes  
of Georgia

**Cumberland Breaks**  
(2,859 S.F.)

01/14/09

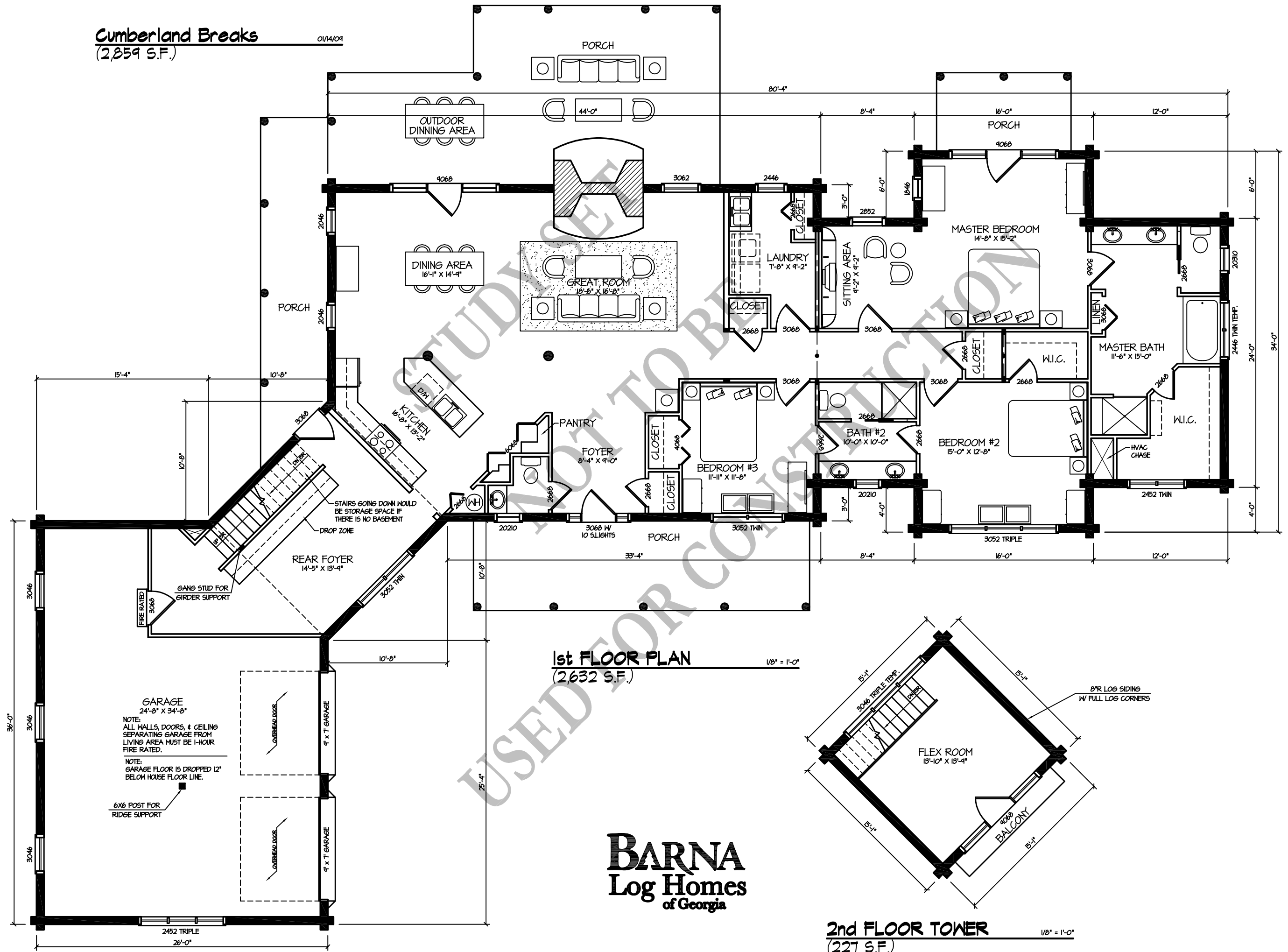


**LEFT ELEVATION** 1/8" = 1'-0"

**BARNA**  
Log Homes  
of Georgia

**Cumberland Breaks**  
(2,859 S.F.)

01/14/01



**1st FLOOR PLAN**  
(2,632 S.F.)

1/8" = 1'-0"

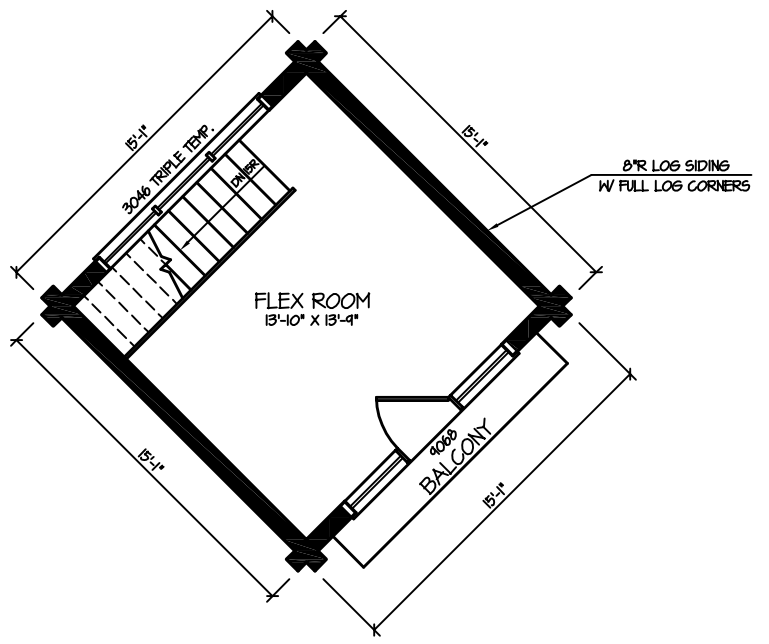
**GARAGE**  
24'-8" X 34'-8"

NOTE:  
ALL WALLS, DOORS, & CEILING  
SEPARATING GARAGE FROM  
LIVING AREA MUST BE 1-HOUR  
FIRE RATED.

NOTE:  
GARAGE FLOOR IS DROPPED 12"  
BELOW HOUSE FLOOR LINE.

6x6 POST FOR  
RIDGE SUPPORT

**BARNA**  
Log Homes  
of Georgia



**2nd FLOOR TOWER**  
(227 S.F.)

1/8" = 1'-0"