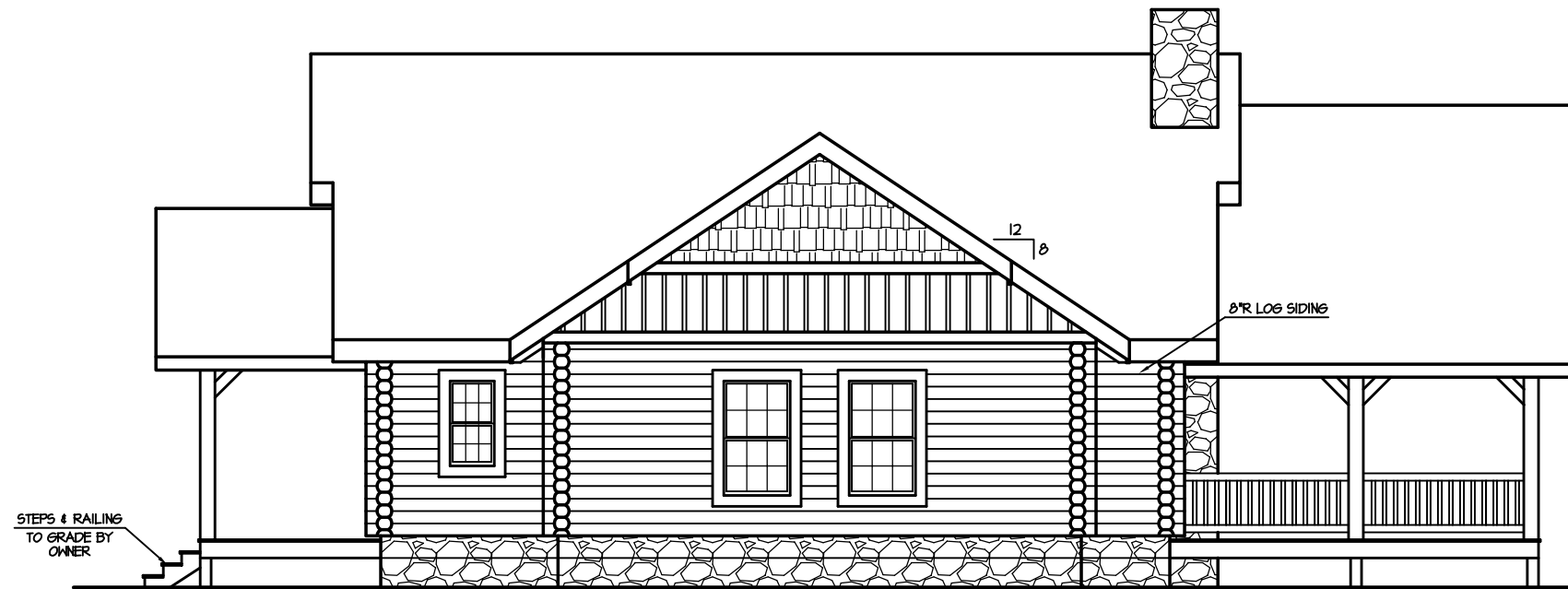


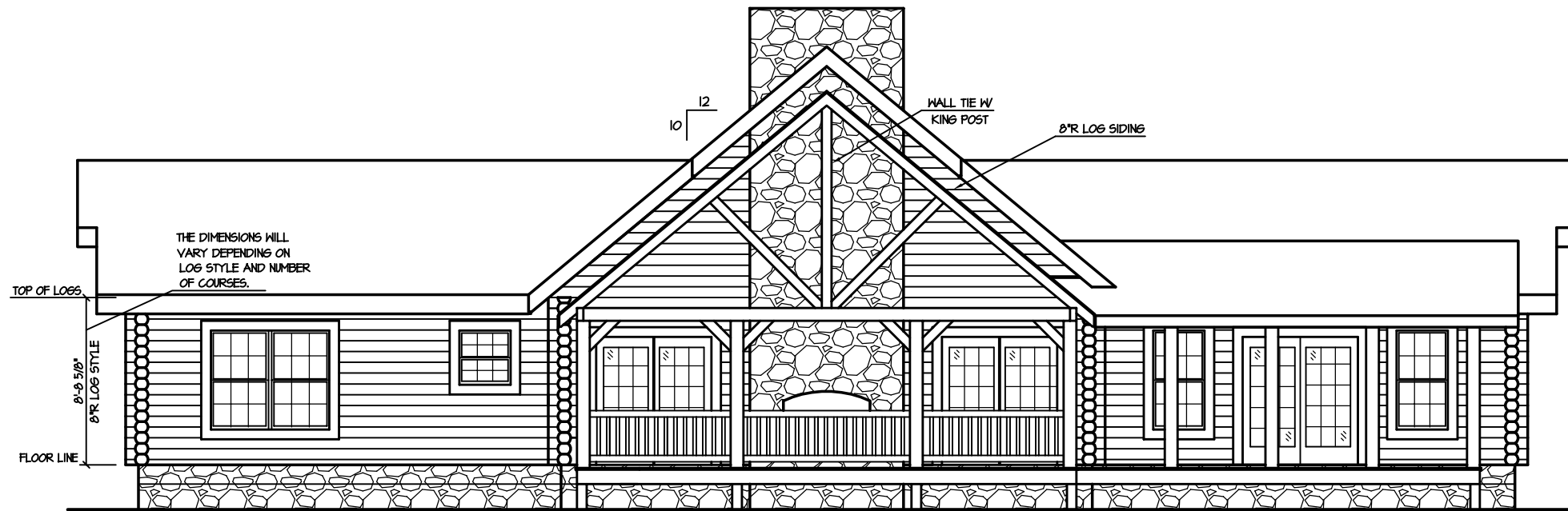
FRONT ELEVATION

STEPS & RAILING
TO GRADE BY
1/4\"/>



RIGHT ELEVATION

1/4" = 1'-0"



THE DIMENSIONS WILL VARY DEPENDING ON LOG STYLE AND NUMBER OF COURSES.

12
10

HALL TIE W/
KING POST

8"R LOG SIDING

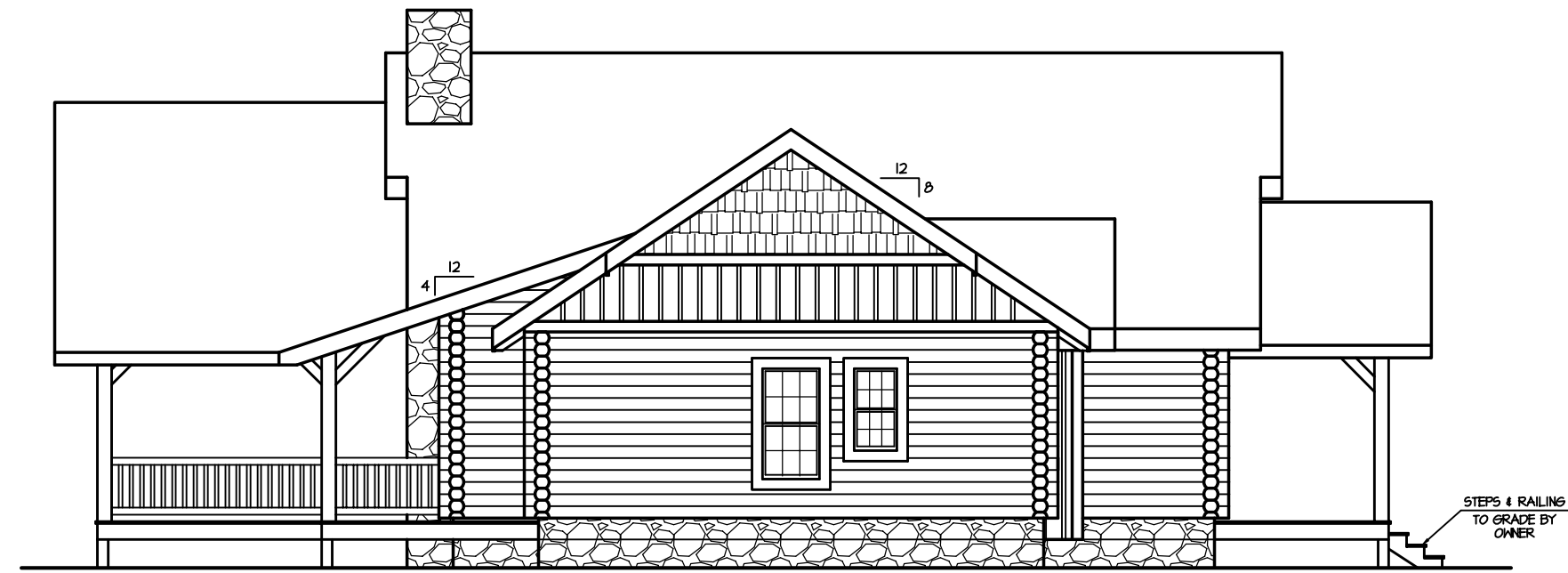
8" x 5 1/2"

TOP OF LOGS

FLOOR LINE

REAR ELEVATION

1/4" = 1'-0"



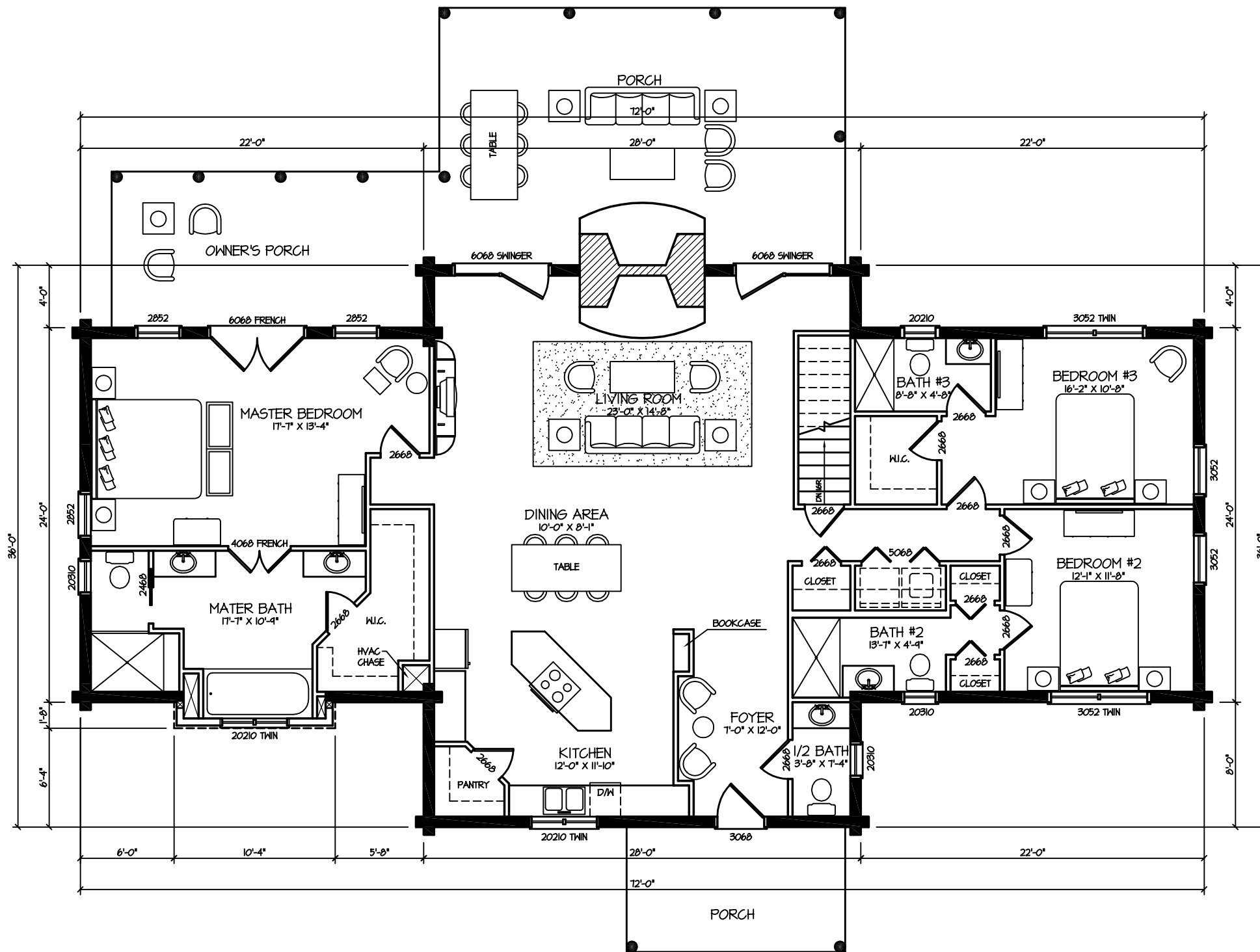
12
4

12
8

STEPS & RAILING
TO GRADE BY
OWNER

LEFT ELEVATION

1/4" = 1'-0"



1st FLOOR PLAN 1/4" = 1'-0"