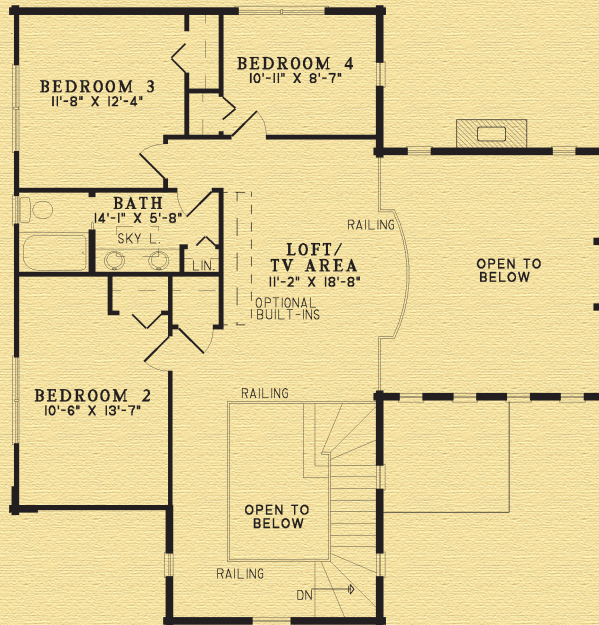


The Ellijay

Width:	50' 6"
Depth:	57' 8"
Main Floor:	1,438 sq. ft. (134 sq. meters)
Upper Floor:	1,015 sq. ft. (94 sq. meters)
Total Living:	2,453 sq. ft. (228 sq. meters)



Special Note: 9' plus or minus & 10'-2" first floor wall height, 5'-6" second floor wall height. Two full circle windows included. Log Siding or half log for exterior of box bay.

BARNA
Log Homes

The experience matters™