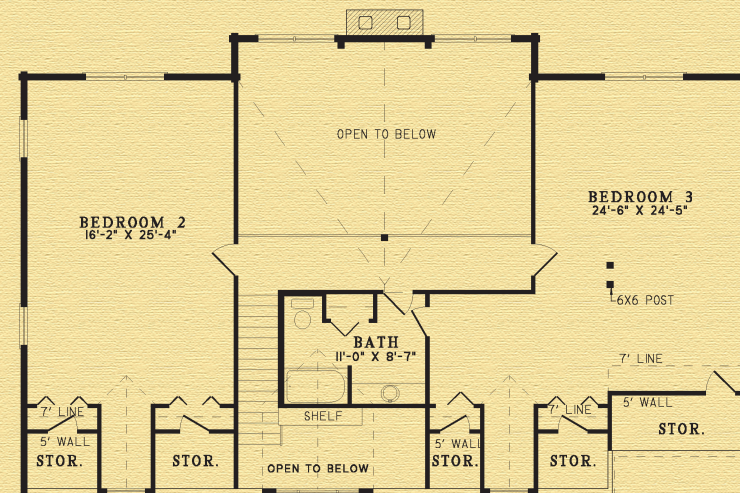
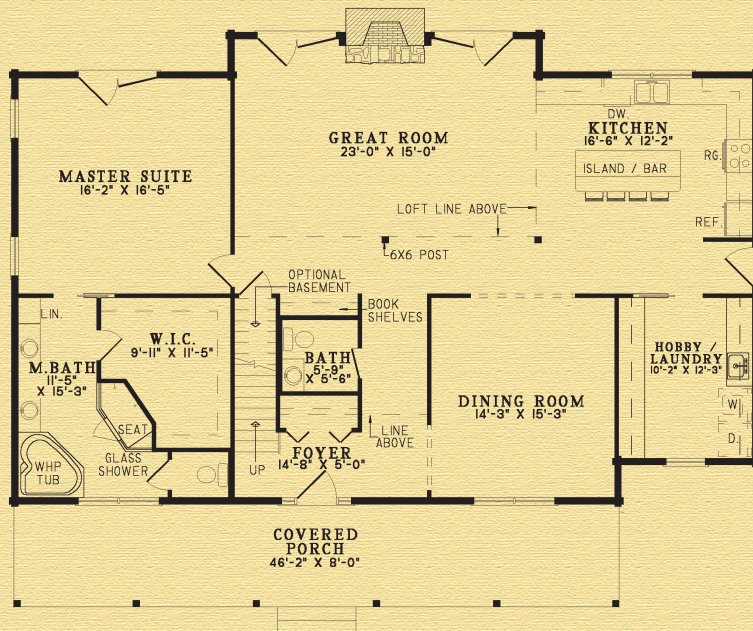


The Fairview

Width: 57' 0"
 Depth: 43' 10"
 Main Floor: 1,922 sq. ft. (179 sq. meters)
 Upper Floor: 1,190 sq. ft. (111 sq. meters)
 Total Living: 3,112 sq. ft. (290 sq meters)



Special Notes: Has 7'-11" plus or minus log walls on rear of second floor. Full log gable and shed dormer. Log siding or falf log for one offset gable. One 3" arch included.

BARNA
 Log Homes

The experience matters™