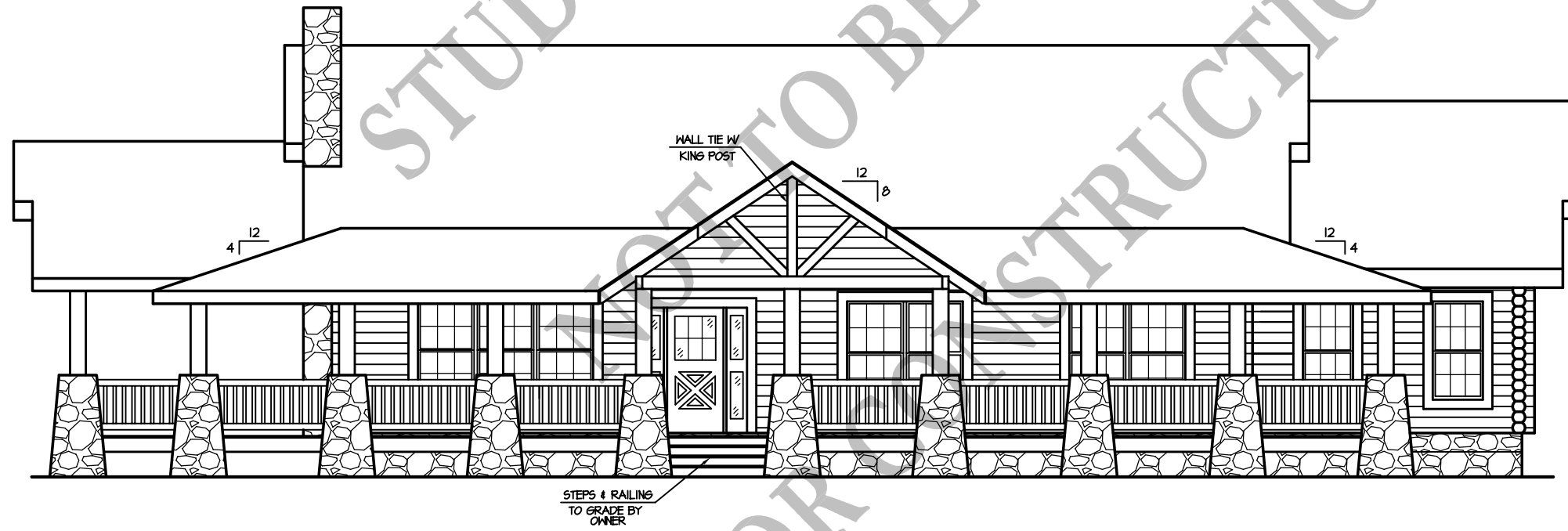


**Frost Glen**  
(1,895 S.F.)

01/14/09



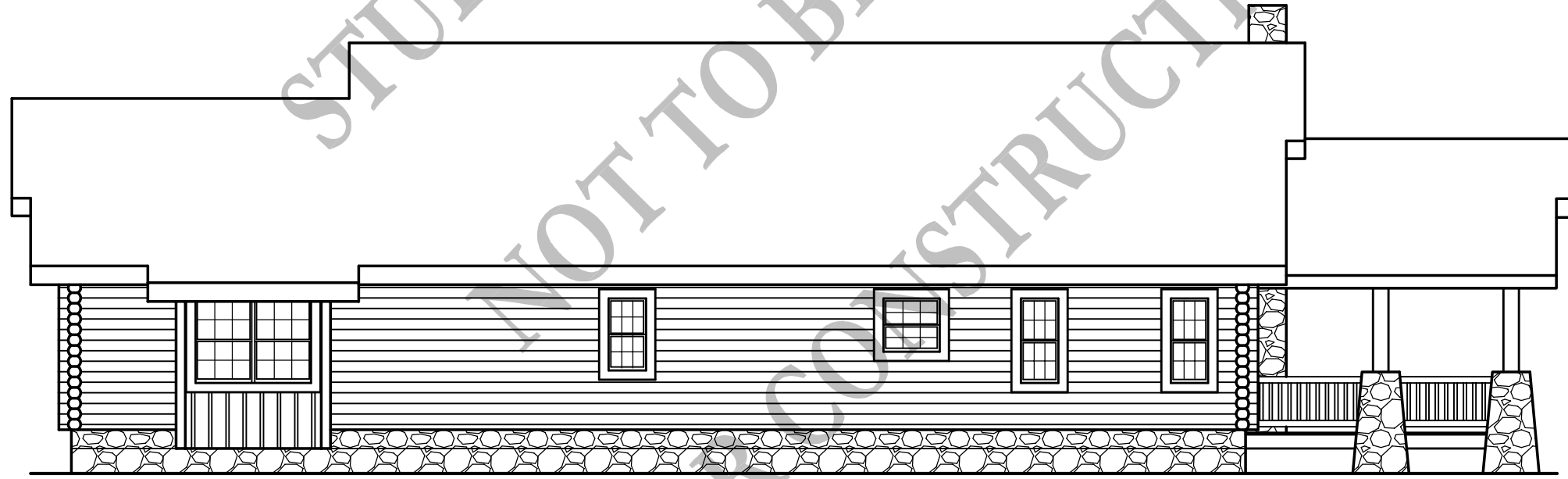
**FRONT ELEVATION**

1/8" = 1'-0"

**BARNA**  
Log Homes  
of Georgia

**Frost Glen**  
(1,895 S.F.)

01/14/09

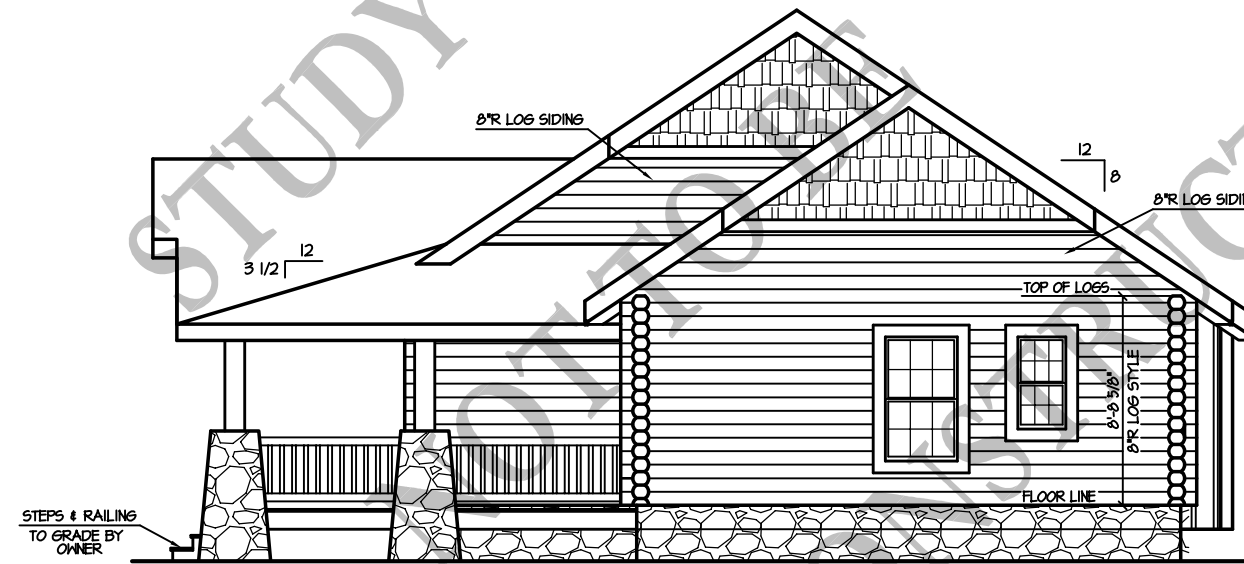


**REAR ELEVATION**  $1/8" = 1'-0"$

**BARNA**  
Log Homes  
of Georgia

**Frost Glen**  
(1,895 S.F.)

01/14/09



**RIGHT ELEVATION**

1/8" = 1'-0"

**BARNA**  
Log Homes  
of Georgia

**Frost Glen**  
(1,895 S.F.)

01/14/09



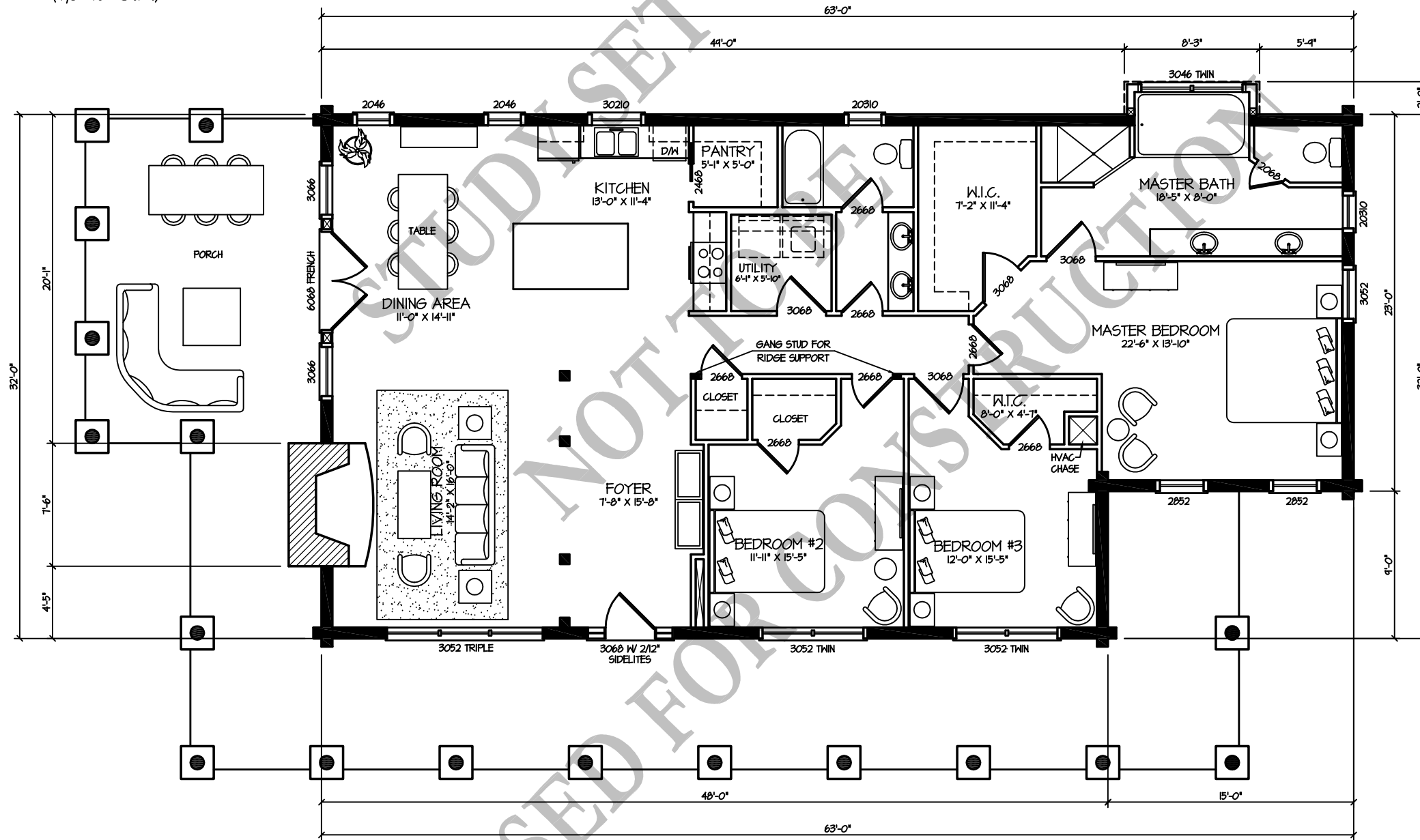
**LEFT ELEVATION**

1/8" = 1'-0"

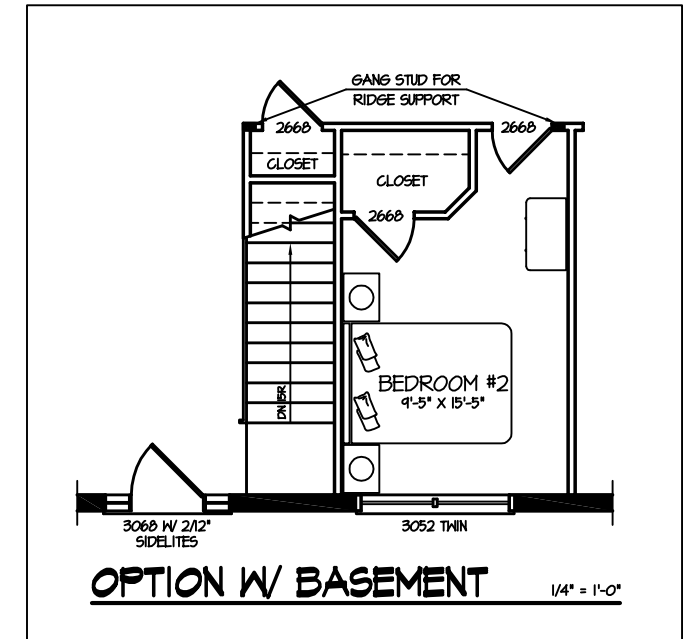
**BARNA**  
Log Homes  
of Georgia

**Frost Glen**  
(1,895 S.F.)

01/14/09



**1st FLOOR PLAN** 1/8" = 1'-0"



**OPTION W/ BASEMENT** 1/4" = 1'-0"

**BARNA**  
Log Homes  
of Georgia