

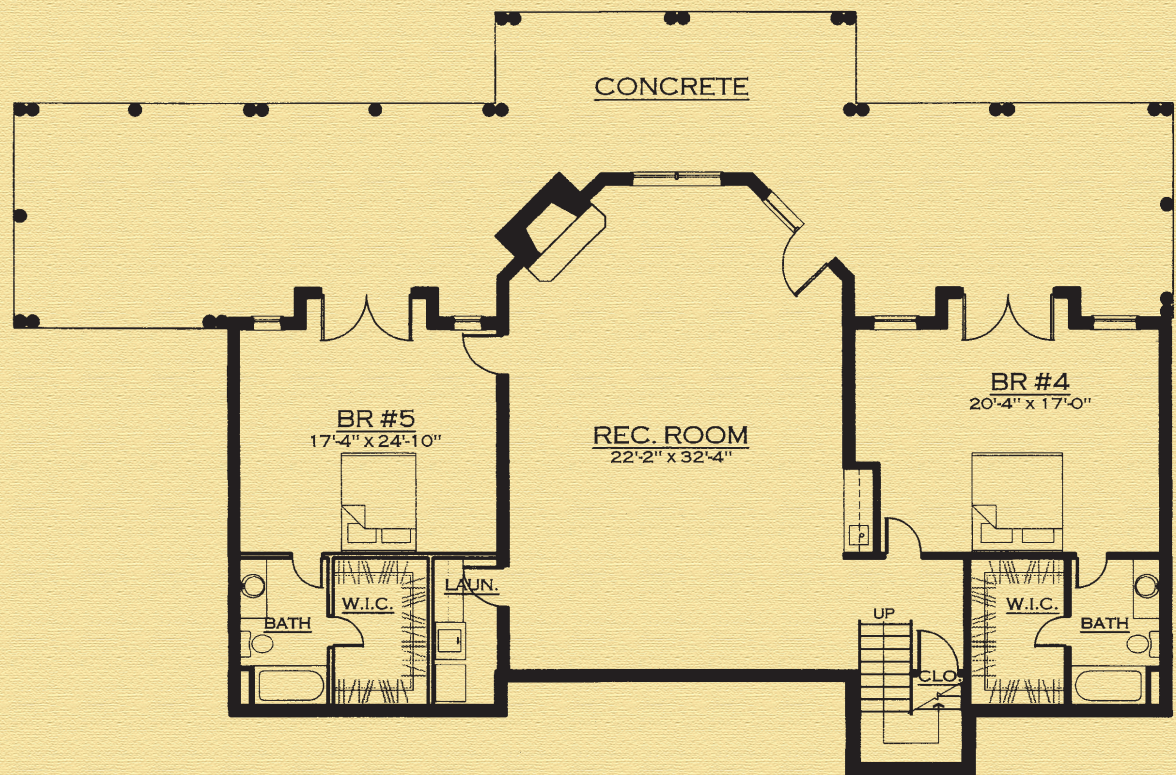
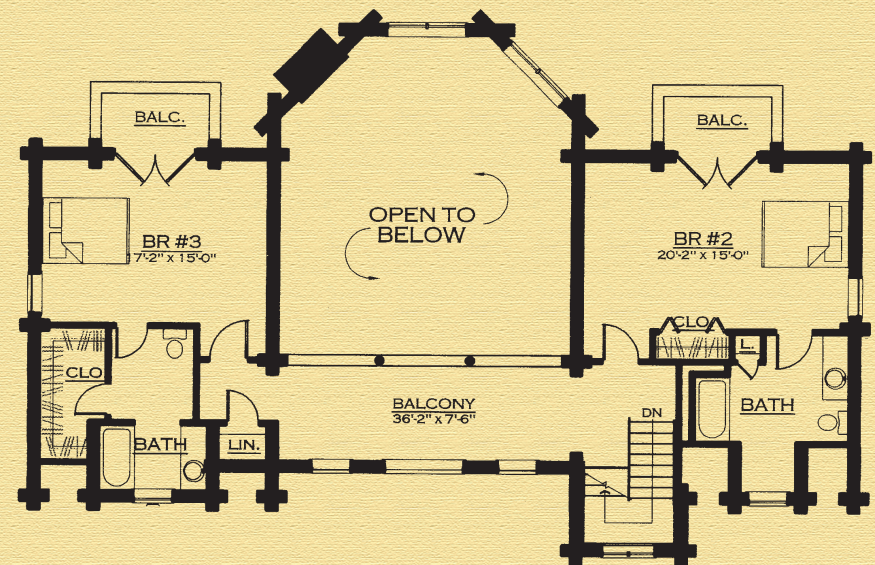
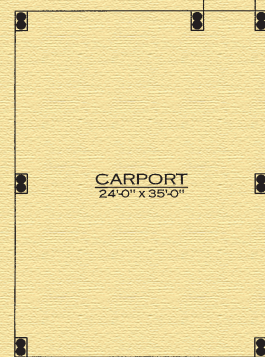
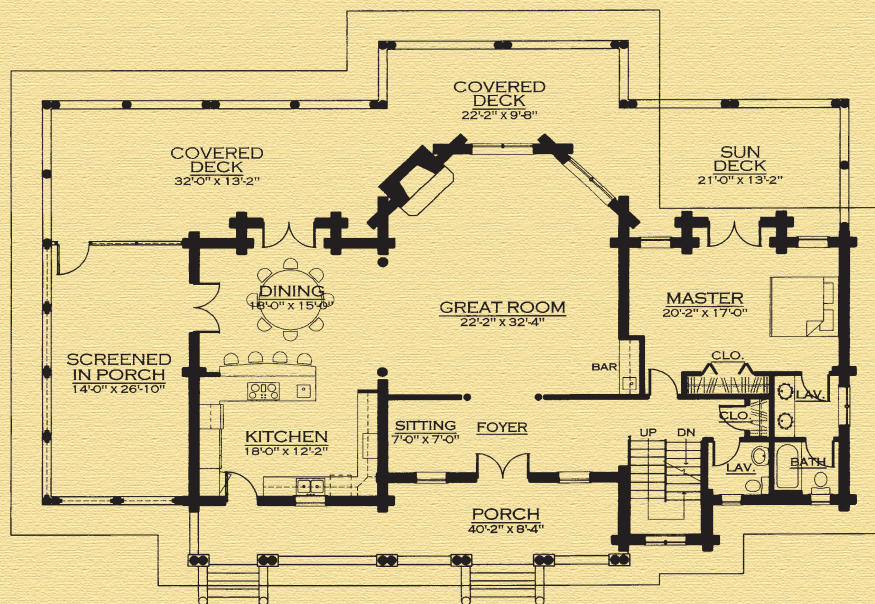


The Hemlock

Width:	77' 0"
Depth:	53' 0"
Bedrooms:	5
Baths:	5 1/2
Main Floor:	1,805 sq. ft. (550 sq. meters)
Upper Floor:	1,805 sq. ft. (550 sq. meters)
Lower Floor:	1,854 sq. ft. (565 sq. meters)
Total Living:	4,707 sq. ft. (1,434 sq. meters)

Special Notes: 11' plus or minus basic wall height, 5'-4" and 9'-3" plus or minus second floor wall height, round truss and purlin front and rear main roodlines, wood arches and metal O-ring connectors included, exterior exposed log floor joists and horizontal cross beam not included.

BARNA
Log Homes
The experience matters™



BARNA
Log Homes

The experience matters™