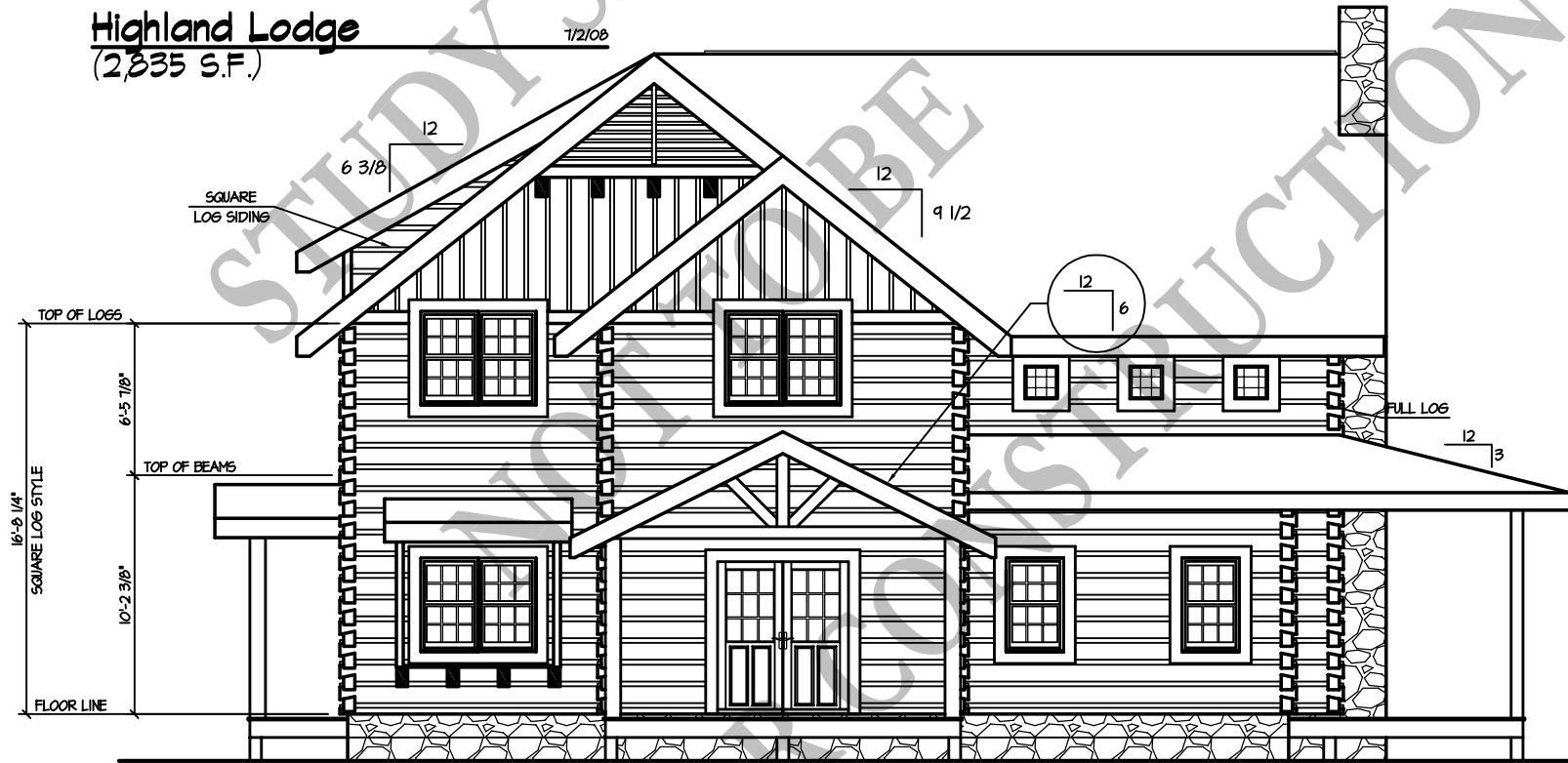


**Highland Lodge**  
(2,835 S.F.)

7/2/08



**FRONT ELEVATION**

1/8" = 1'-0"

**BARNA**  
Log Homes  
of Georgia

**Highland Lodge**  
(2,835 S.F.)

1/2/08

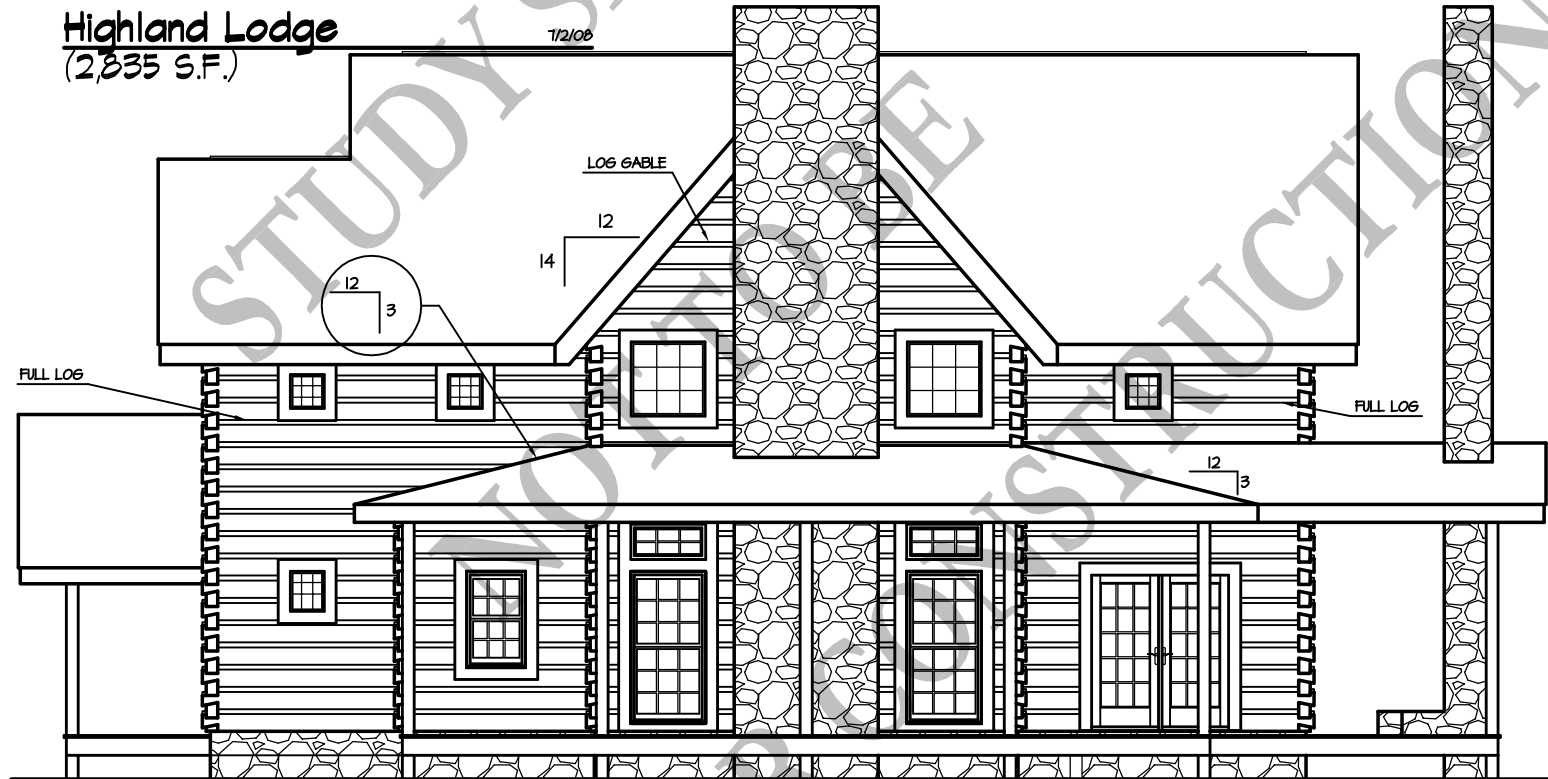


**REAR ELEVATION**

1/8" = 1'-0"

**BARNA**  
Log Homes  
of Georgia

Highland Lodge  
(2,835 S.F.)



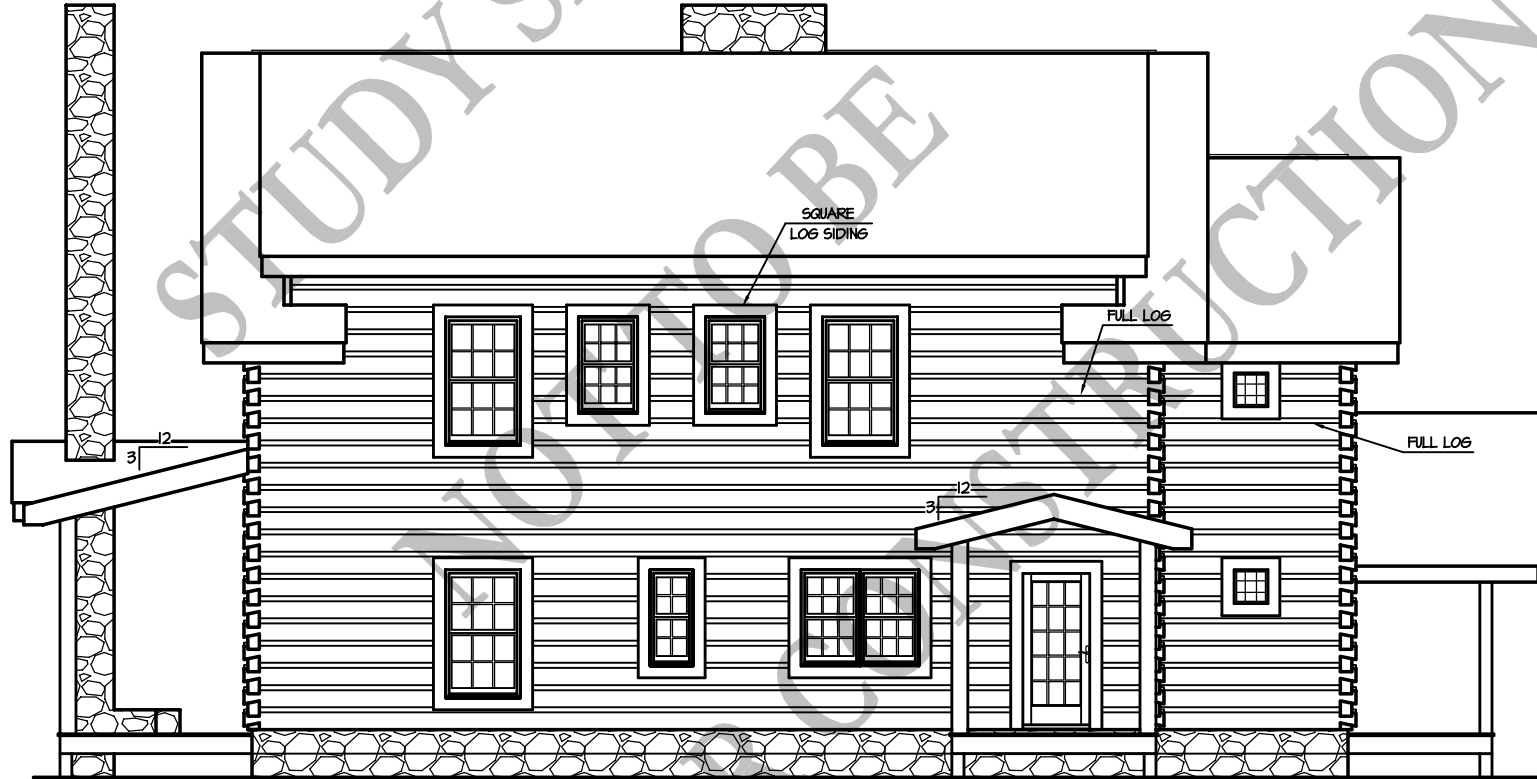
RIGHT ELEVATION

1/8" = 1'-0"

**BARNA**  
Log Homes  
of Georgia

Highland Lodge  
(2,835 S.F.)

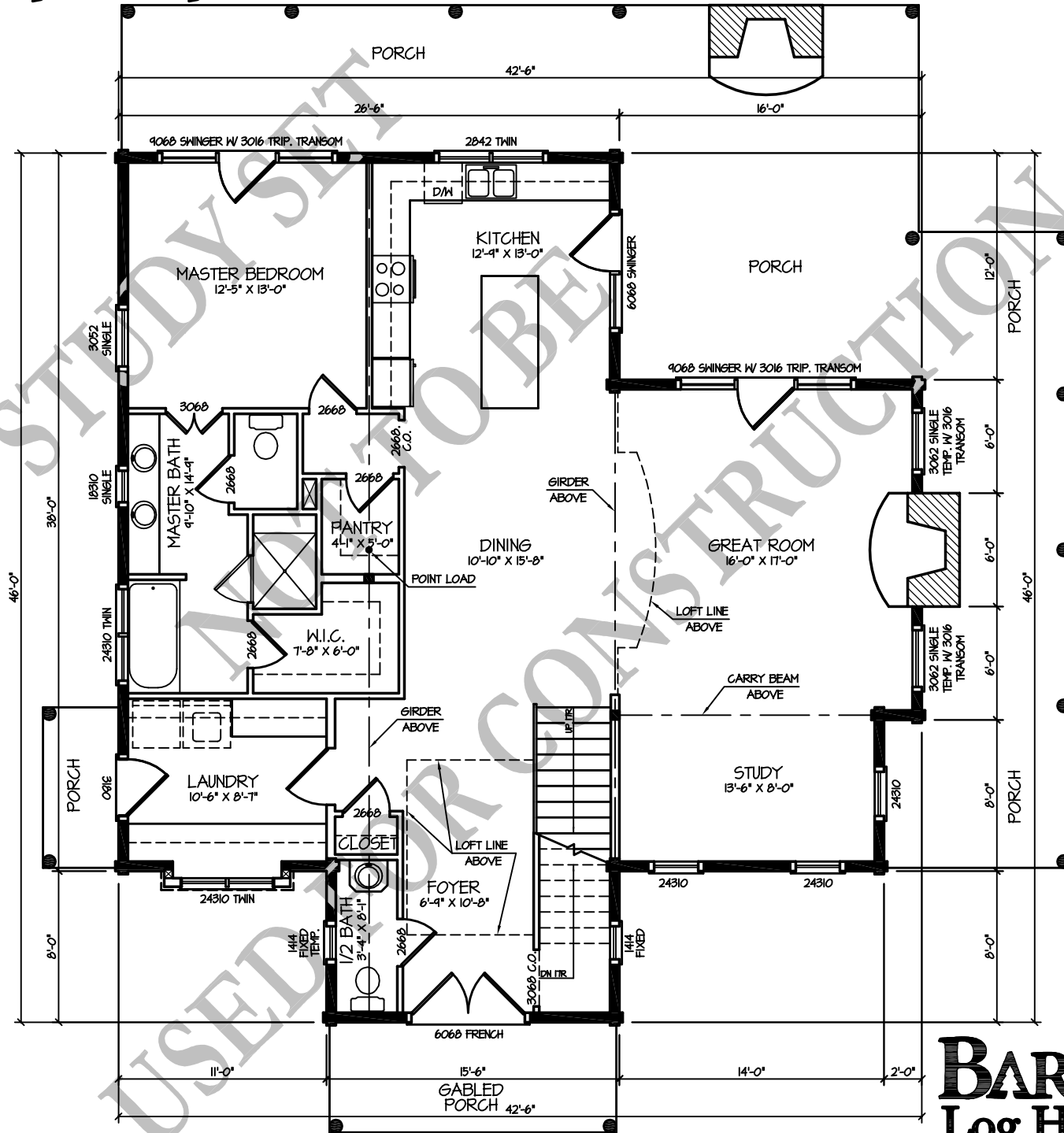
7/2/08



**BARNA**  
Log Homes  
of Georgia

LEFT ELEVATION

1/8" = 1'-0"



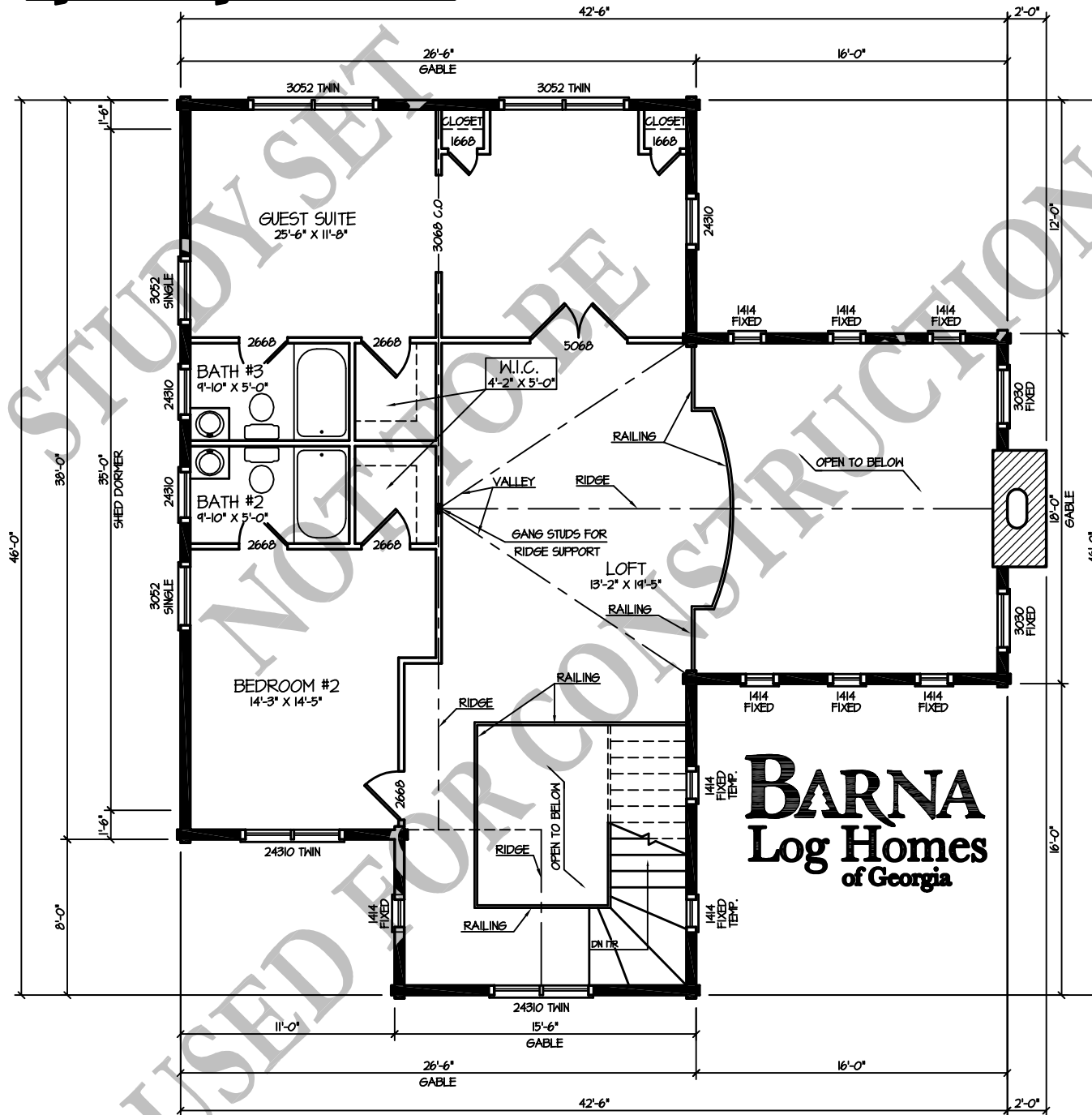
1st FLOOR PLAN  
(1,539 S.F.)

1/8" = 1'-0"

**BARNA**  
Log Homes  
of Georgia

# Highland Lodge

7/2/08



**2nd FLOOR PLAN**  
(1,315 S.F.)

1/8" = 1'-0"

**BARNA**  
Log Homes  
of Georgia