

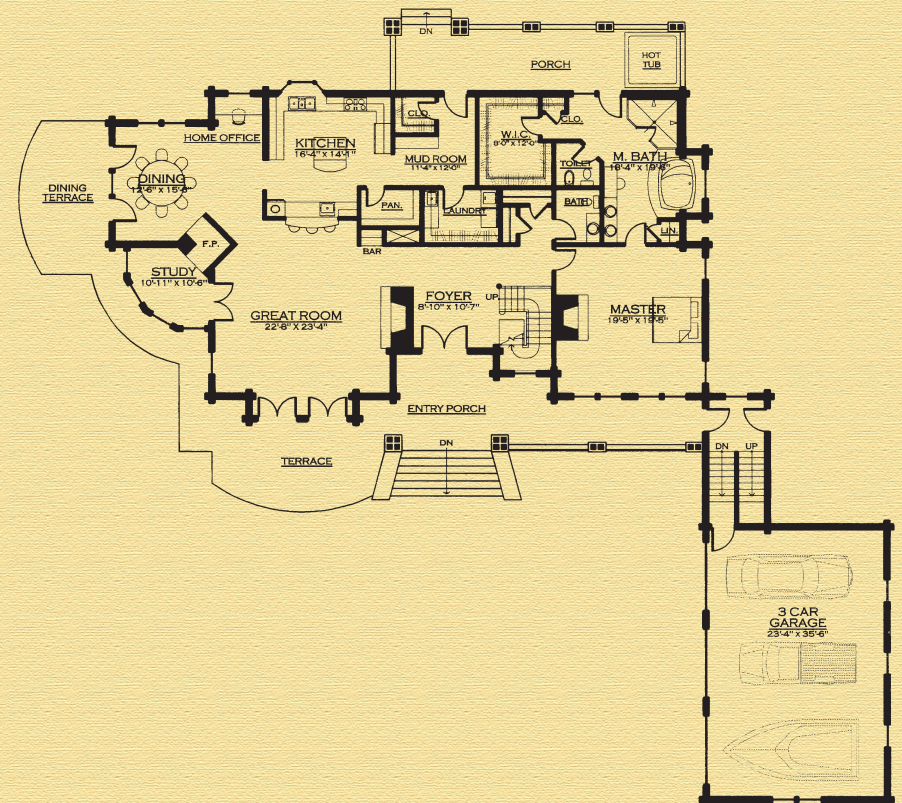
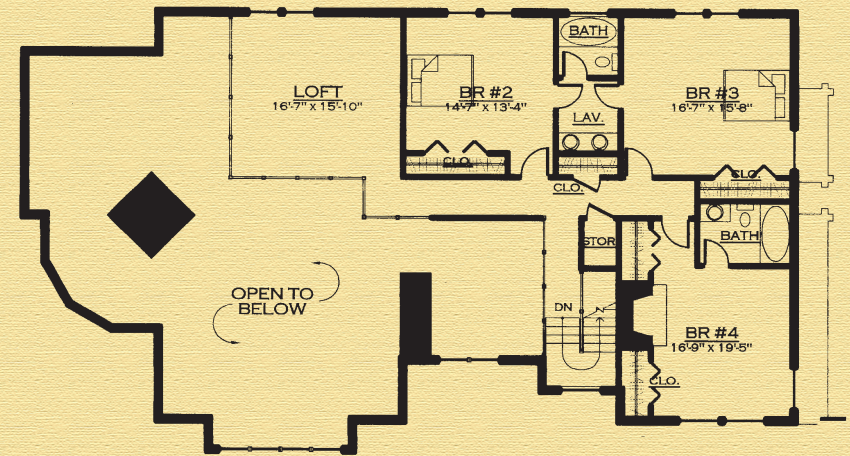
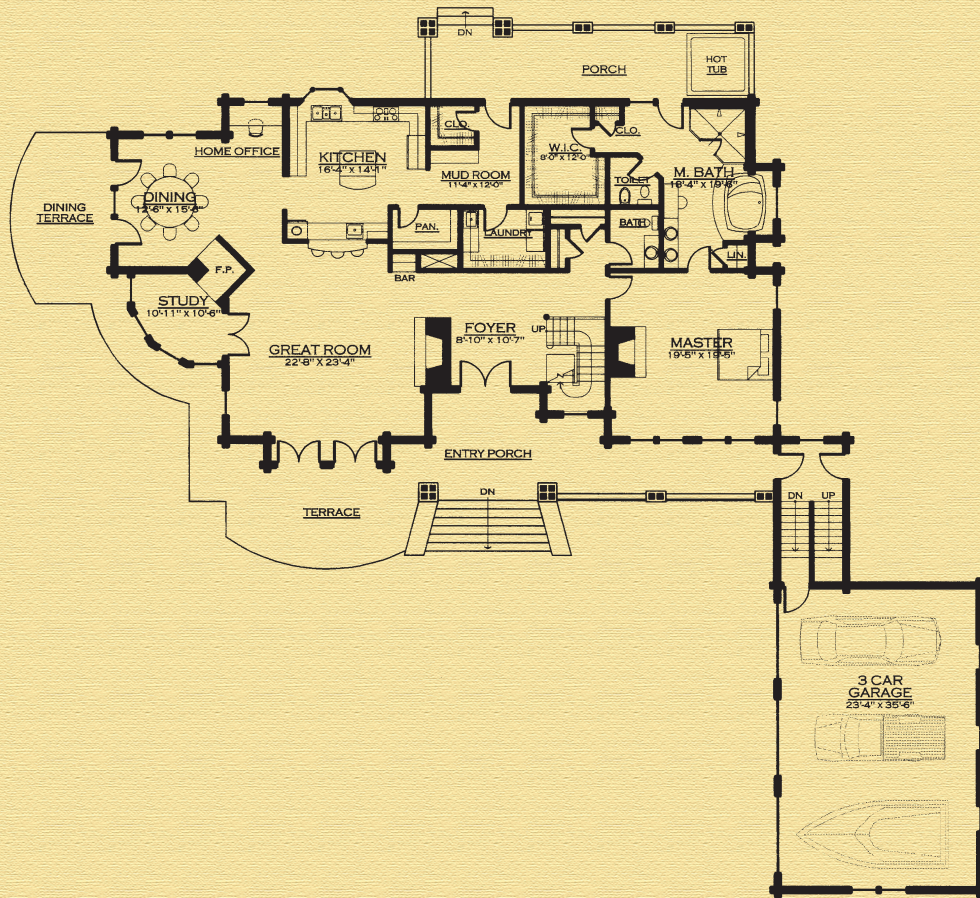
The Ironwood

Width:	115' 0"
Depth:	103' 0"
Bedrooms:	4
Baths:	3 1/2
Main Floor:	2,836 sq. ft. (864 sq. meters)
Upper Floor:	1,467 sq. ft. (447 sq. meters)
Apartment:	744 sq. ft. (227 sq. meters)
Total Living:	5,047 sq. ft. (1,538 sq. meters)

Special Notes: 10' plus or minus wall height on first floor, 6' plus or minus second floor wall height, other miscellaneous second floor wall heights, 10' plus or minus (combined first and second floor) garage wall height, logs extend 3'-4" lower in garage, garage logs set on 16" plus or minus masonry stem wall, sandwich roof over garage, standard 2x floor joists with OSB over garage. Breezeway floor and stairs into garage are masonry.

BARNA
Log Homes

The experience matters™



BARNA
 Log Homes
The experience matters™