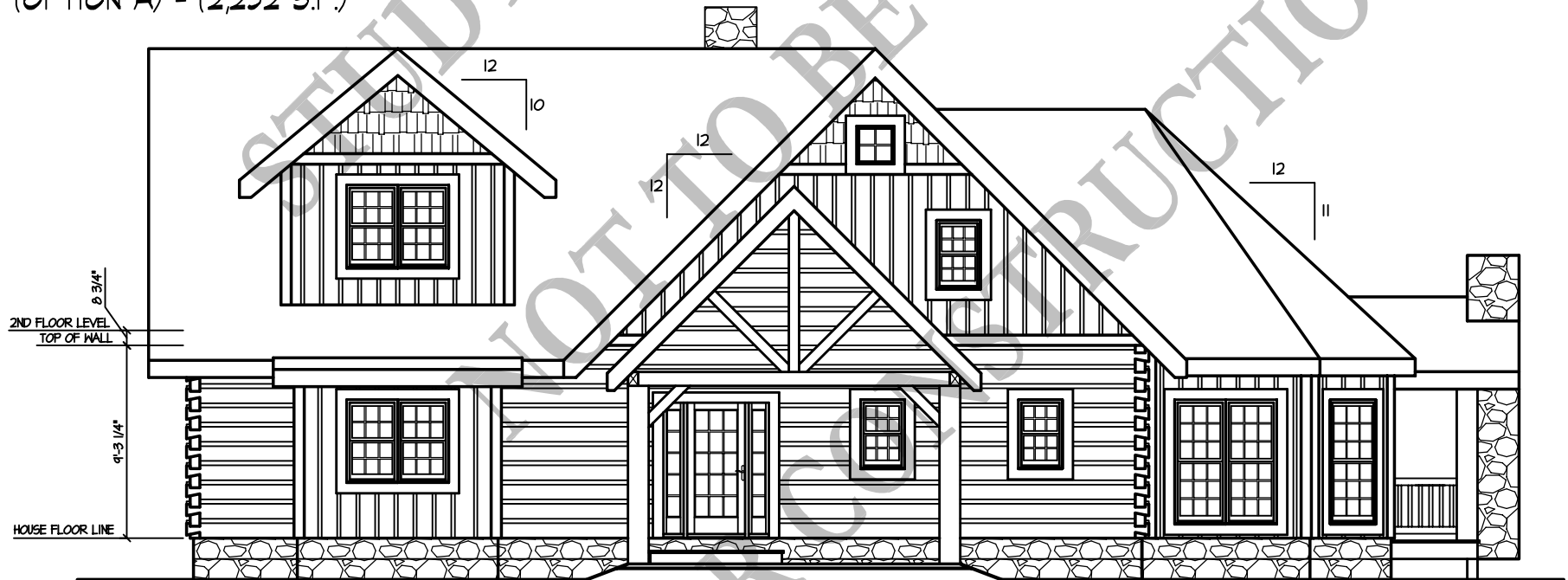


**Oconee Cabin**  
(OPTION A) - (2,252 S.F.)

02/23/04



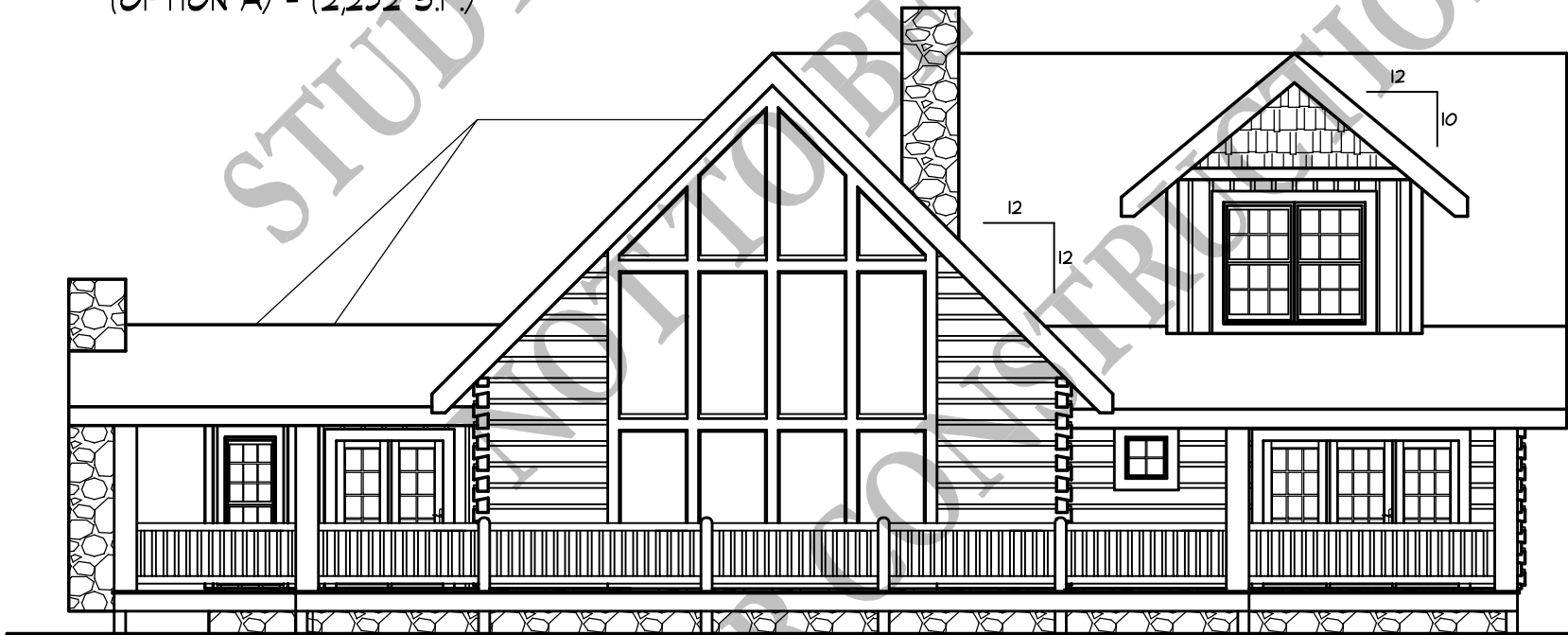
**FRONT ELEVATION**

1/8" = 1'-0"

**BARNA**  
Log Homes  
of Georgia

Oconee Cabin  
(OPTION A) - (2,252 S.F.)

02/23/04



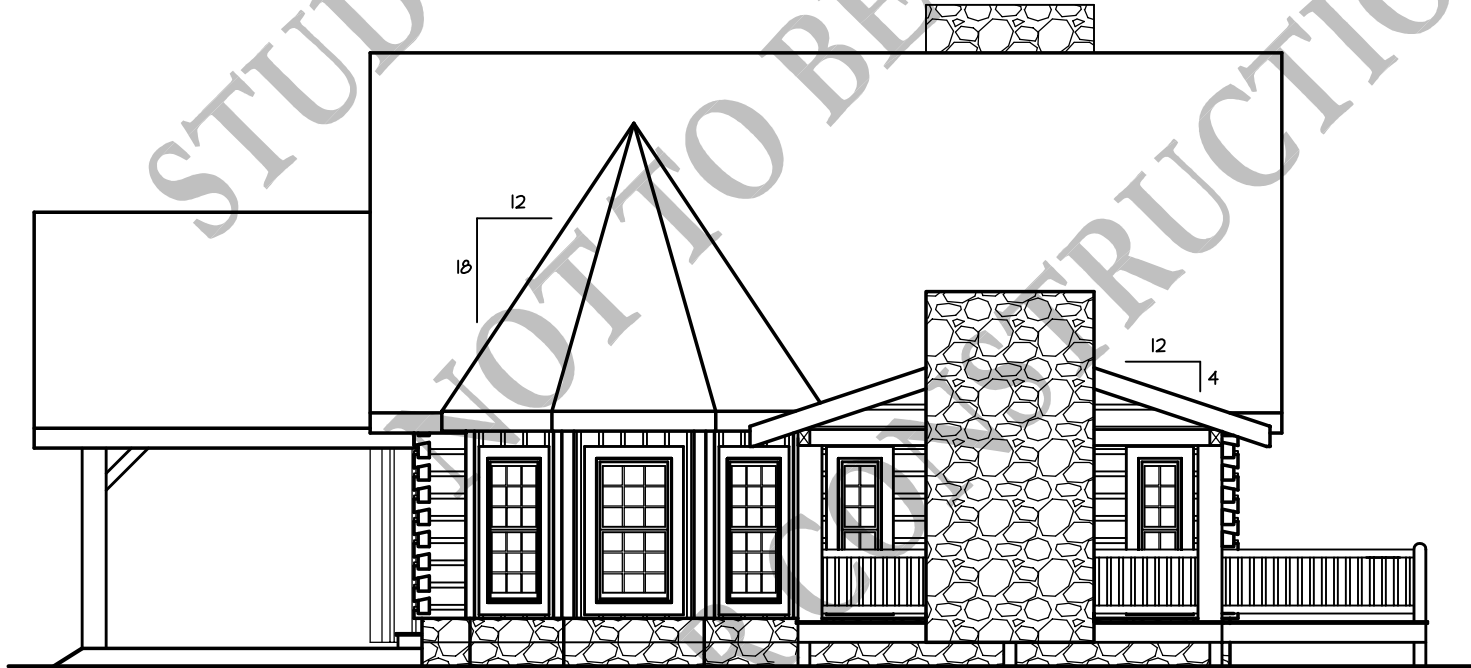
REAR ELEVATION

1/8" = 1'-0"

**BARNA**  
Log Homes  
of Georgia

**Oconee Cabin**  
**(OPTION A) - (2,252 S.F.)**

02/23/04



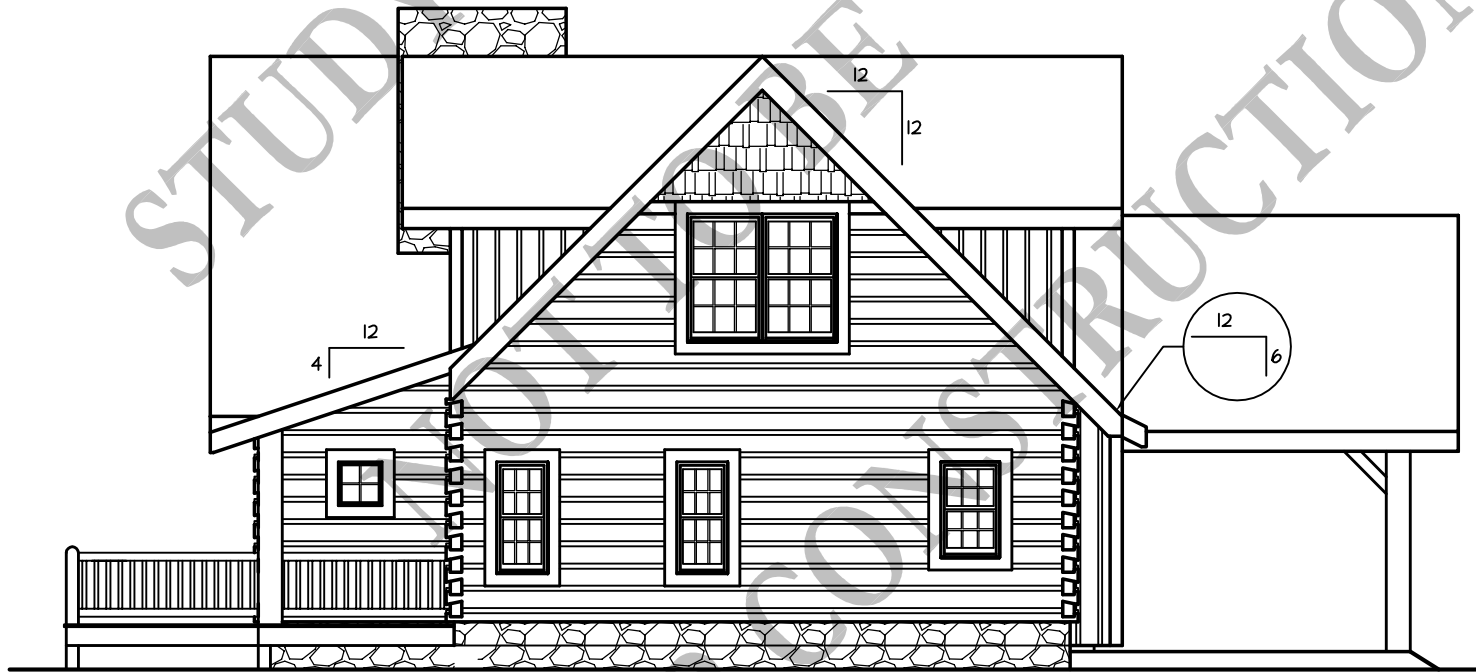
**RIGHT ELEVATION**

1/8" = 1'-0"

**BARNA**  
**Log Homes**  
**of Georgia**

**Oconee Cabin**  
(OPTION A) - (2,252 S.F.)

02/23/09



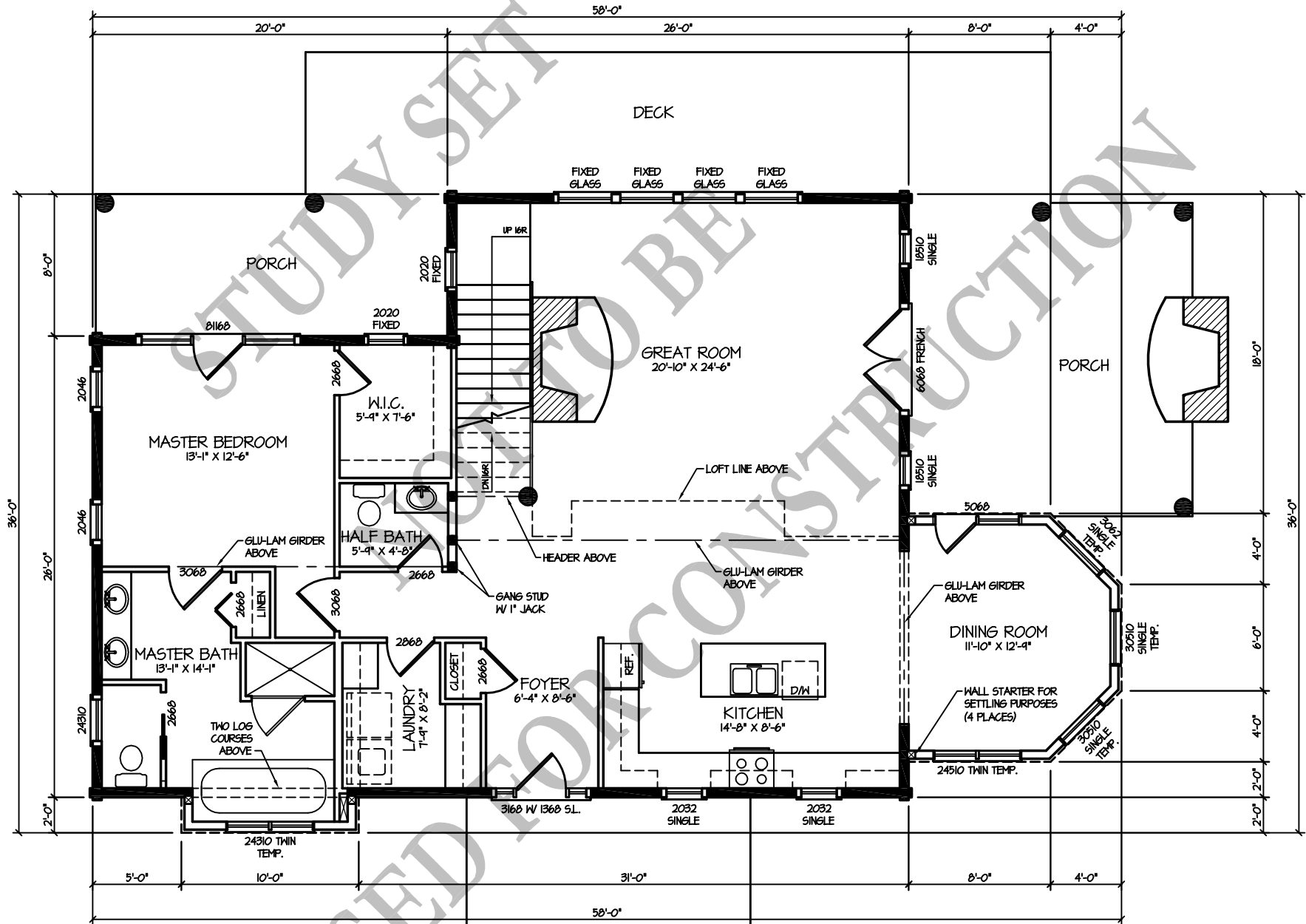
**LEFT ELEVATION**

1/8" = 1'-0"

**BARNA**  
Log Homes  
of Georgia

Oconee Cabin  
(OPTION A)

02/23/04



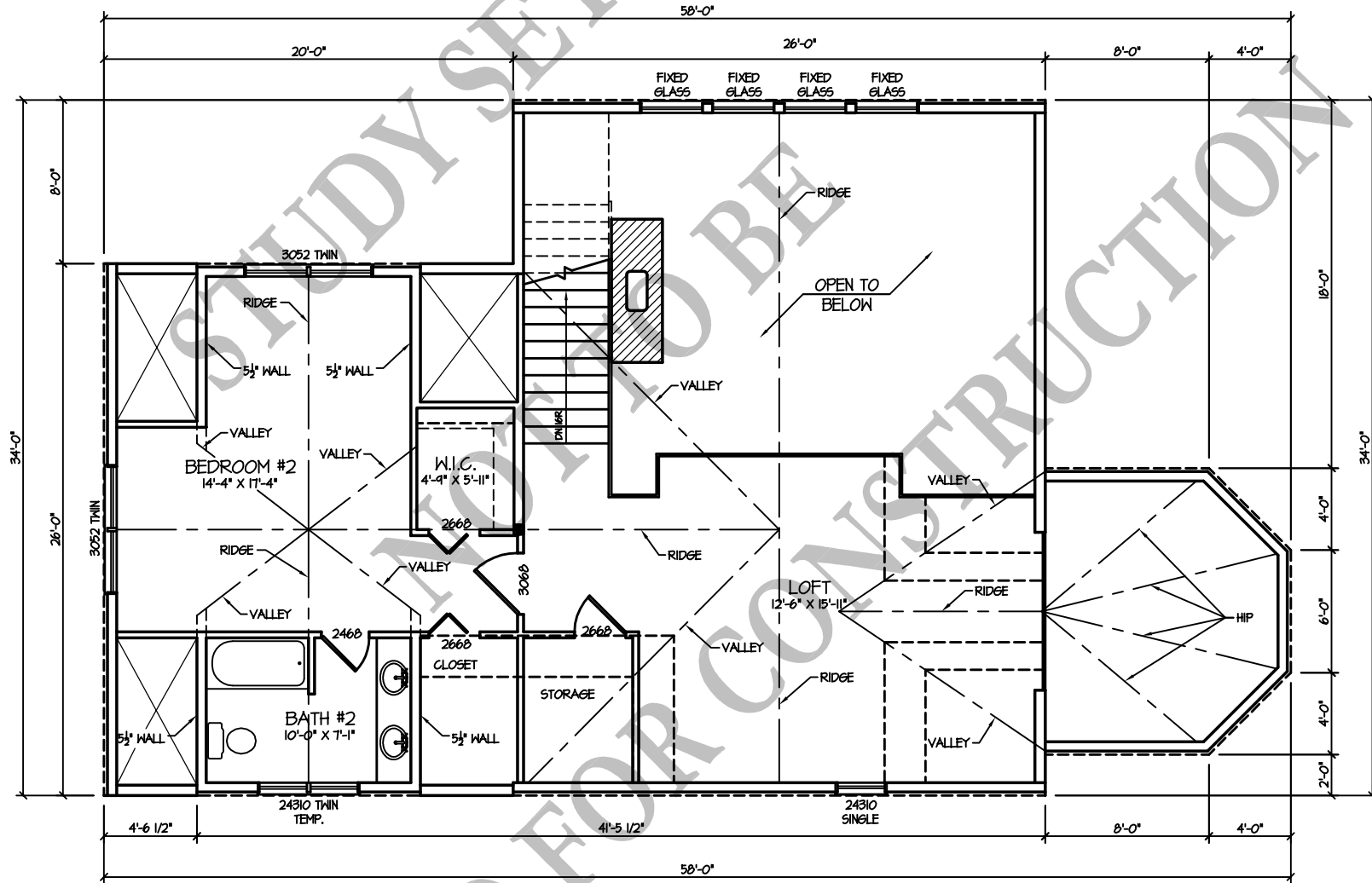
1st FLOOR PLAN  
(1,568 S.F.)

1/8" = 1'-0"

**BARNA**  
Log Homes  
of Georgia

**Oconee Cabin**  
**(OPTION A)**

02/23/04



**2nd FLOOR PLAN**  
**(684 S.F.)**

1/8" = 1'-0"

**BARNA**  
**Log Homes**  
**of Georgia**