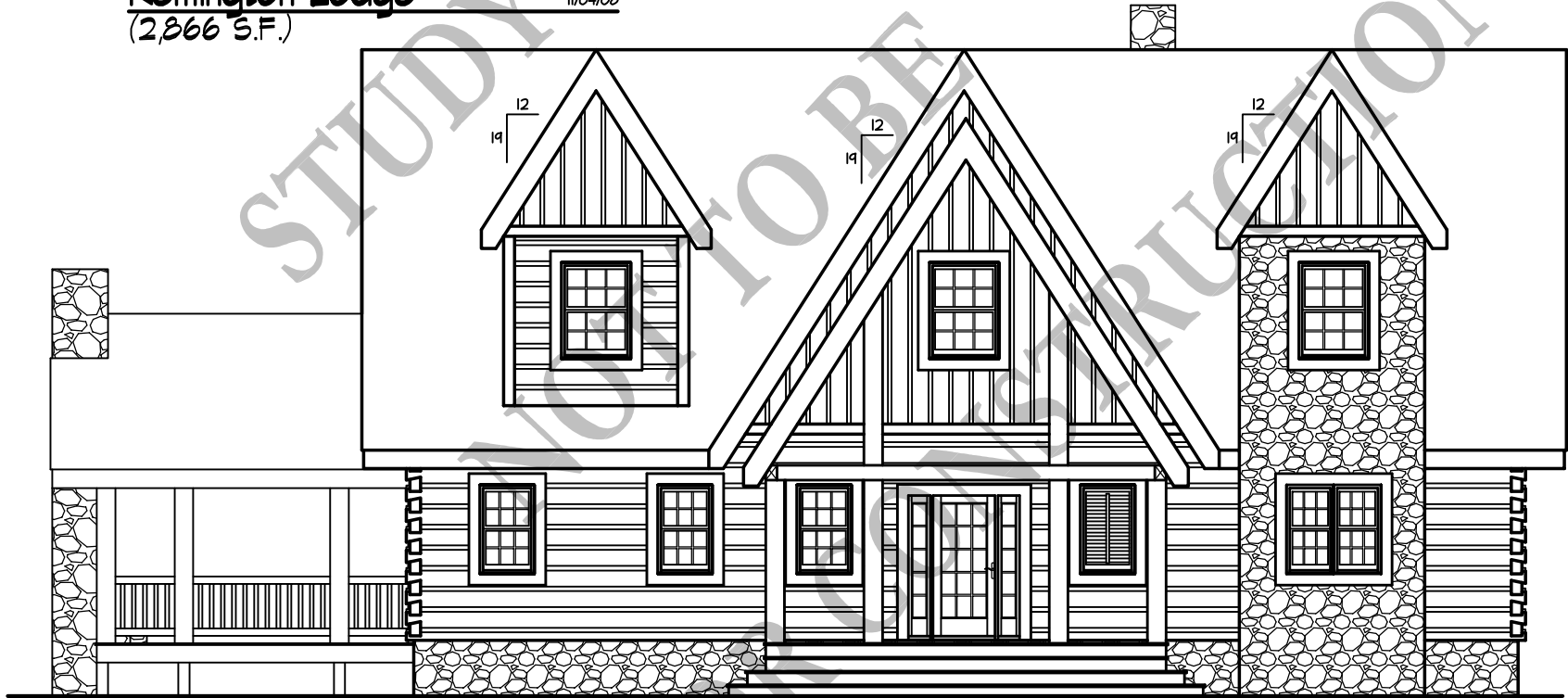


**Remington Lodge**  
(2,866 S.F.)

11/04/08



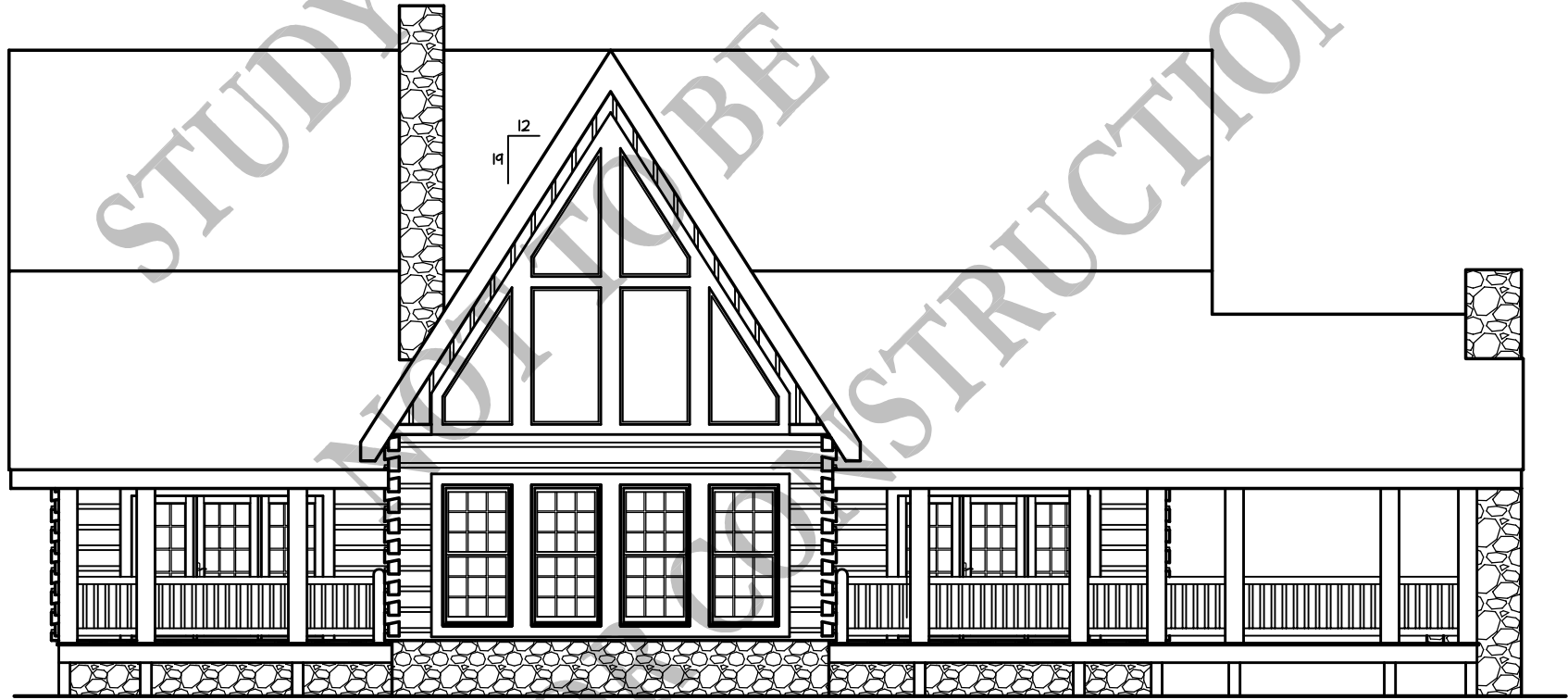
**FRONT ELEVATION**

1/8" = 1'-0"

**BARNA**  
Log Homes  
of Georgia

**Remington Lodge**  
(2,866 S.F.)

11/04/08



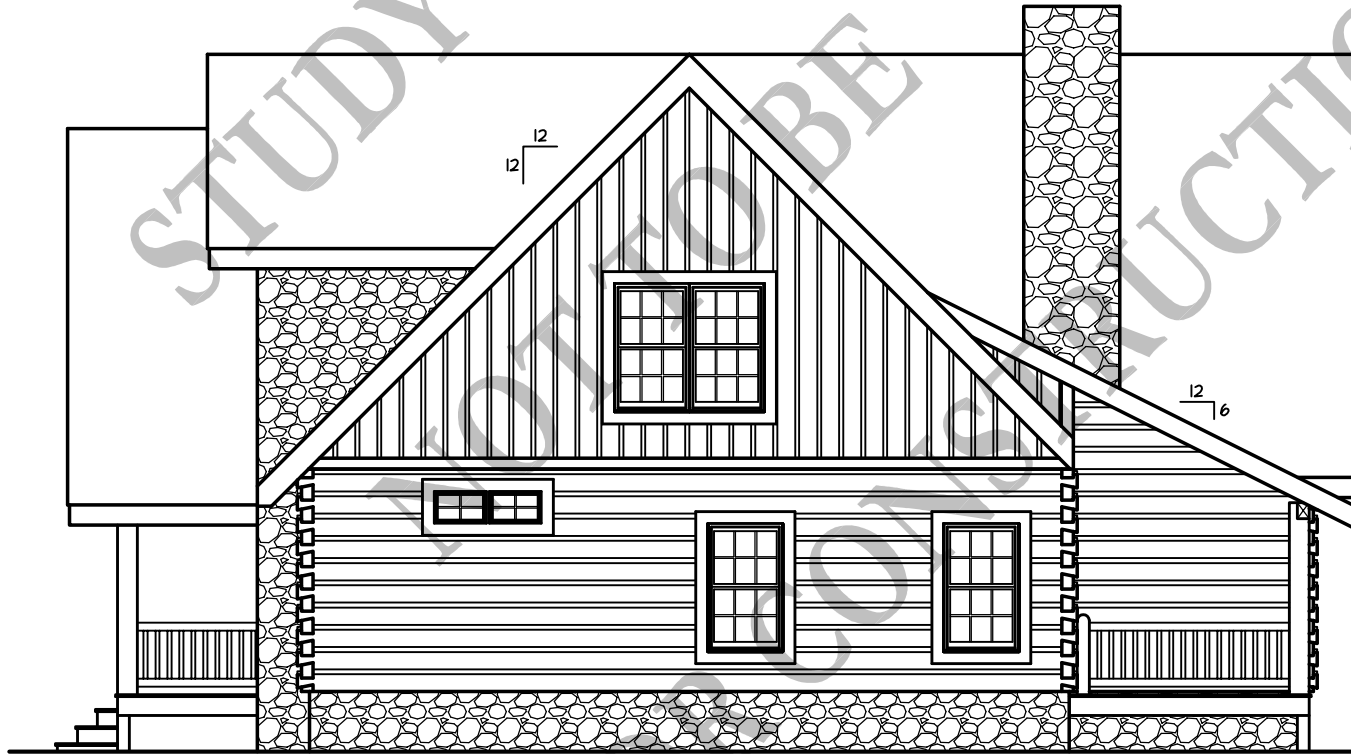
**REAR ELEVATION**

1/8" = 1'-0"

**BARNA**  
Log Homes  
of Georgia

**Remington Lodge**  
(2,866 S.F.)

11/04/08



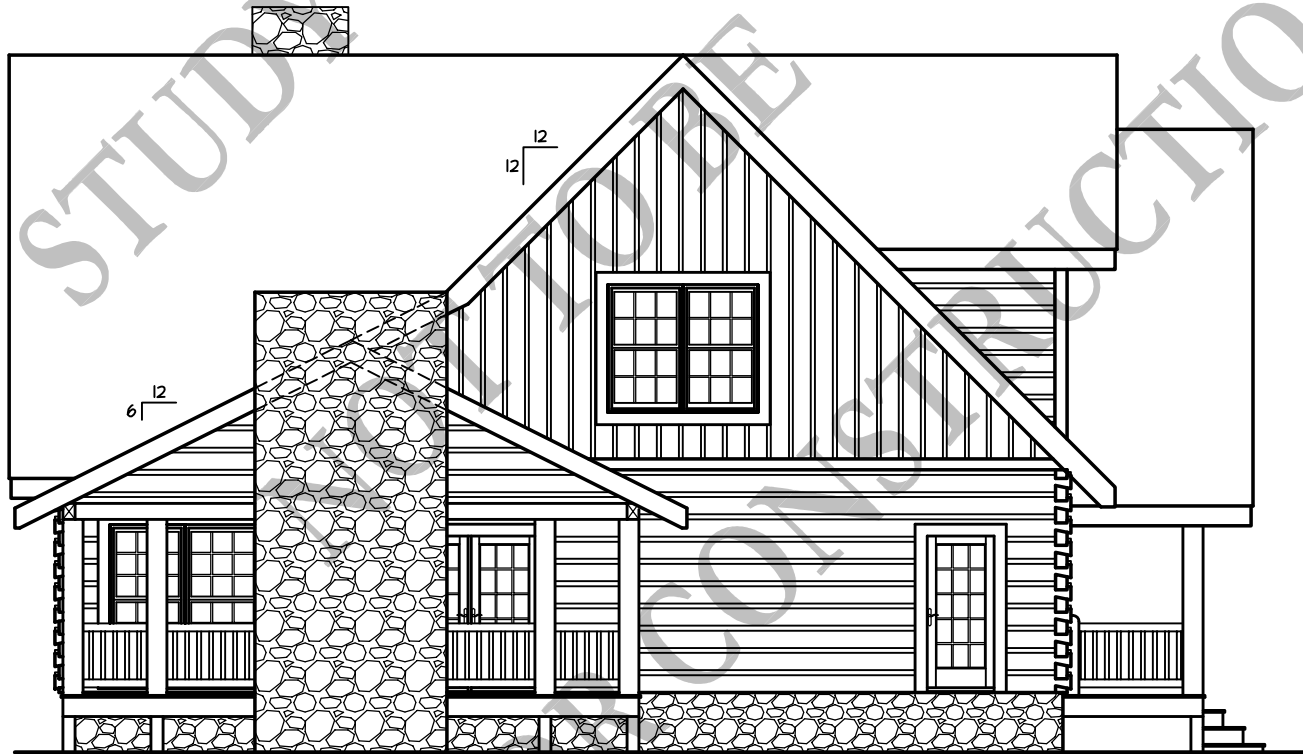
**RIGHT ELEVATION**

1/8" = 1'-0"

**BARNA**  
Log Homes  
of Georgia

**Remington Lodge**  
(2,366 S.F.)

1/04/08



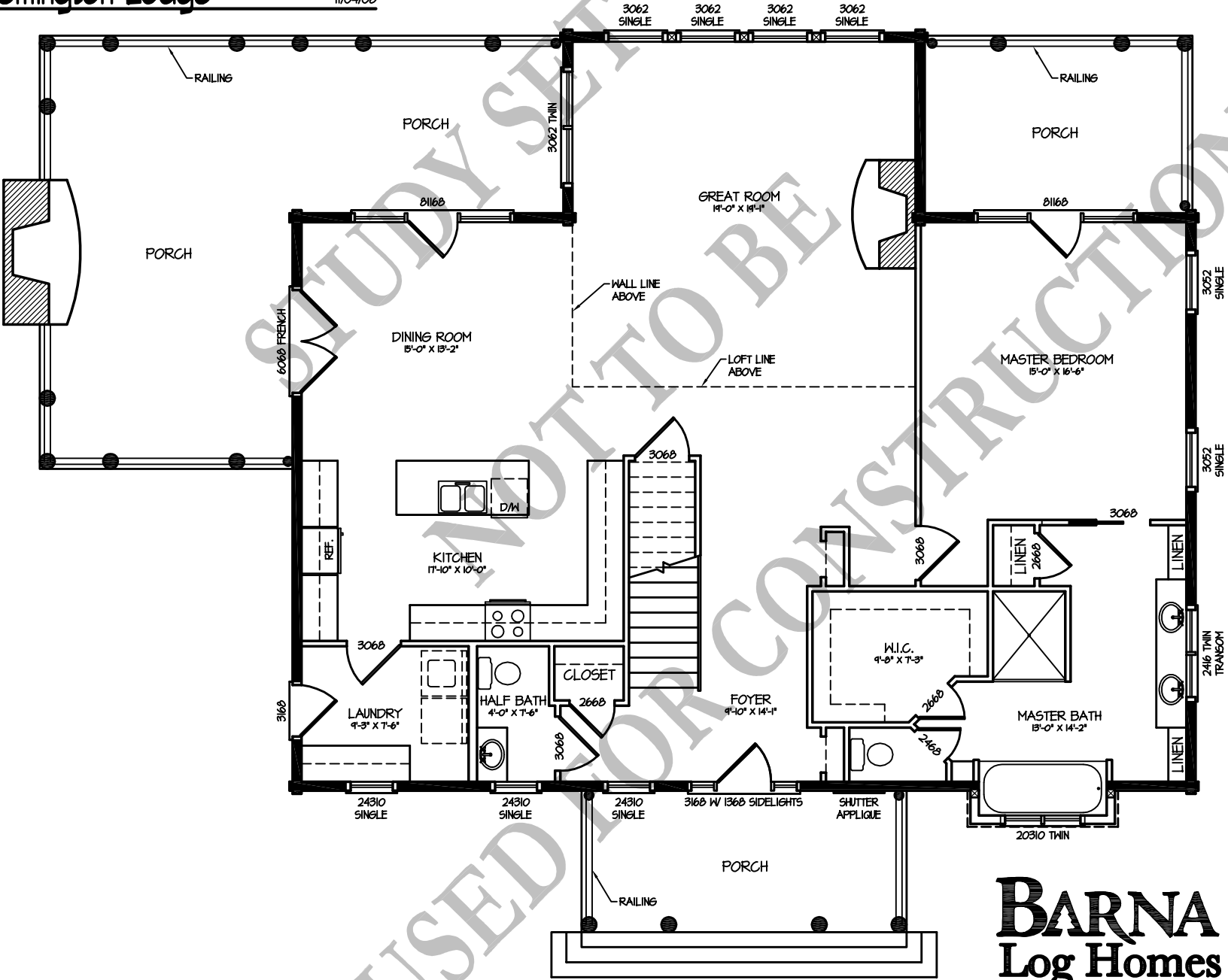
**LEFT ELEVATION**

1/8" = 1'-0"

**BARNA**  
Log Homes  
of Georgia

Remington Lodge

11/04/08



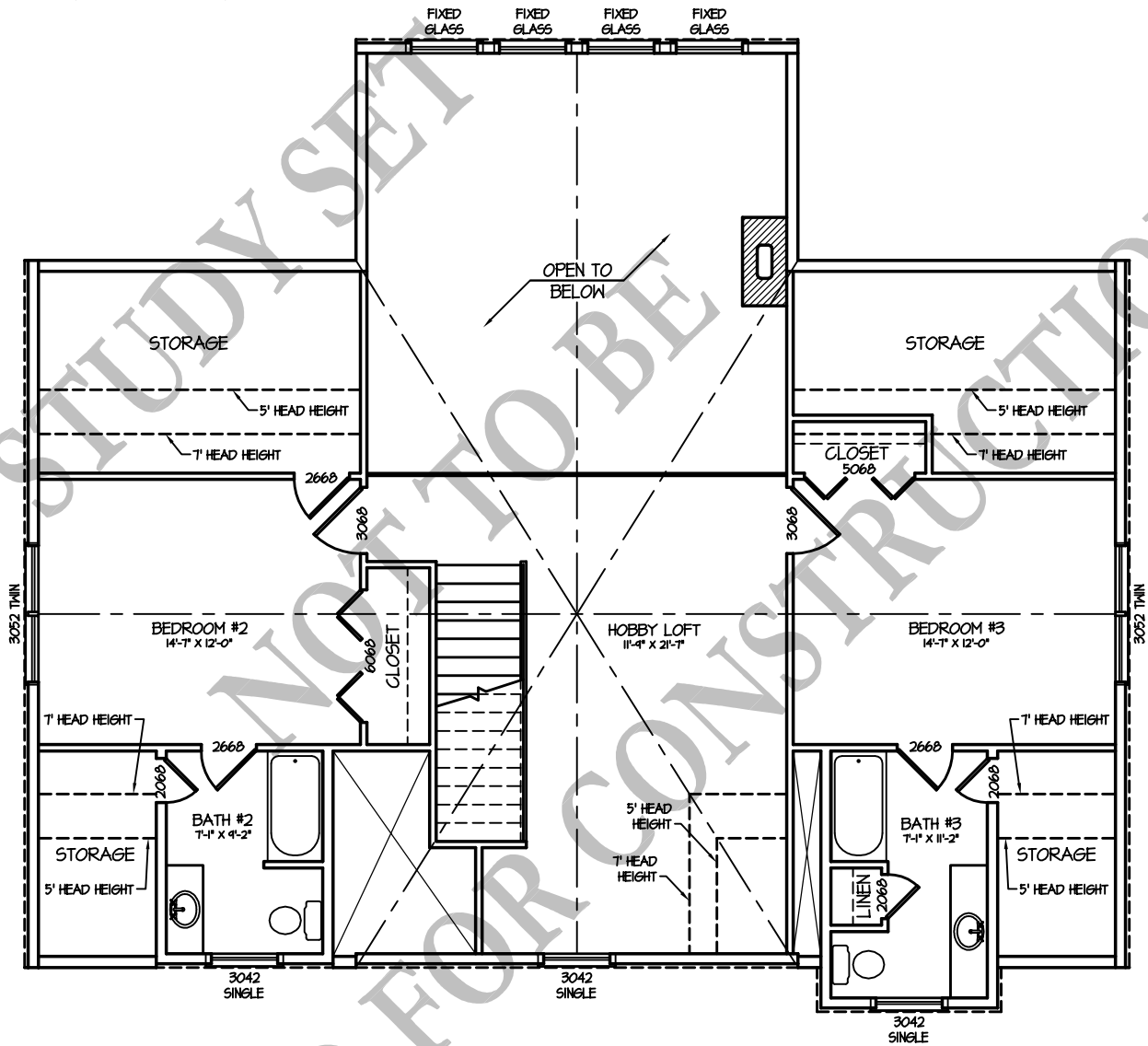
1st FLOOR PLAN  
(1,815 S.F.)

1/8" = 1'-0"

**BARNA**  
Log Homes  
of Georgia

# Remington Lodge

11/04/08



**2nd FLOOR PLAN**  
(1,051 S.F.)

1/8" = 1'-0"

**BARNA**  
Log Homes  
of Georgia