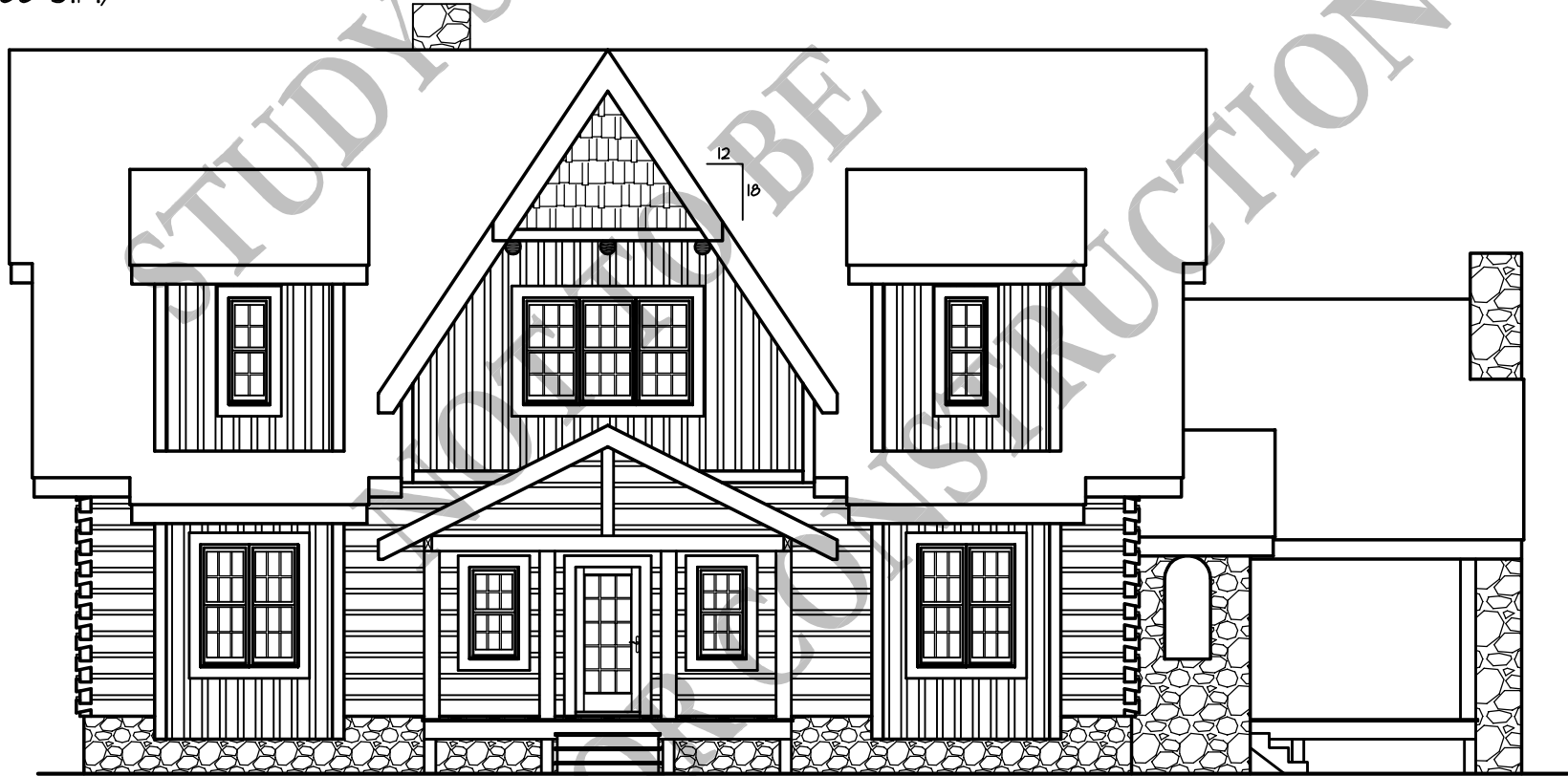


**Smallmouth Lodge**  
(2,533 S.F.)

12/09/08



**FRONT ELEVATION**

1/8" = 1'-0"

**BARNA**  
Log Homes  
of Georgia

**Smallmouth Lodge**  
(2,533 S.F.)

12/04/08



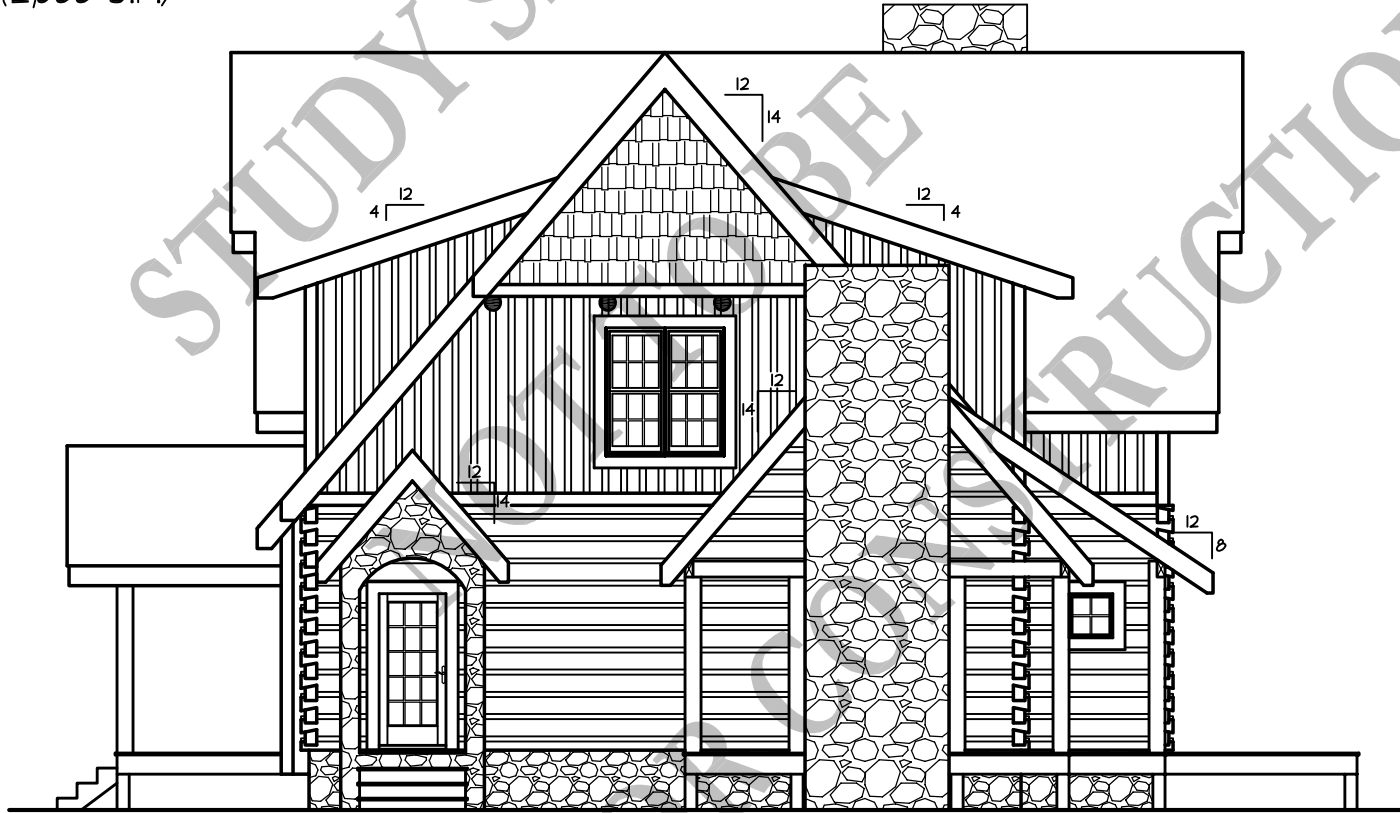
**REAR ELEVATION**

1/8" = 1'-0"

**BARNA**  
Log Homes  
of Georgia

**Smallmouth Lodge**  
(2,533 S.F.)

12/09/08



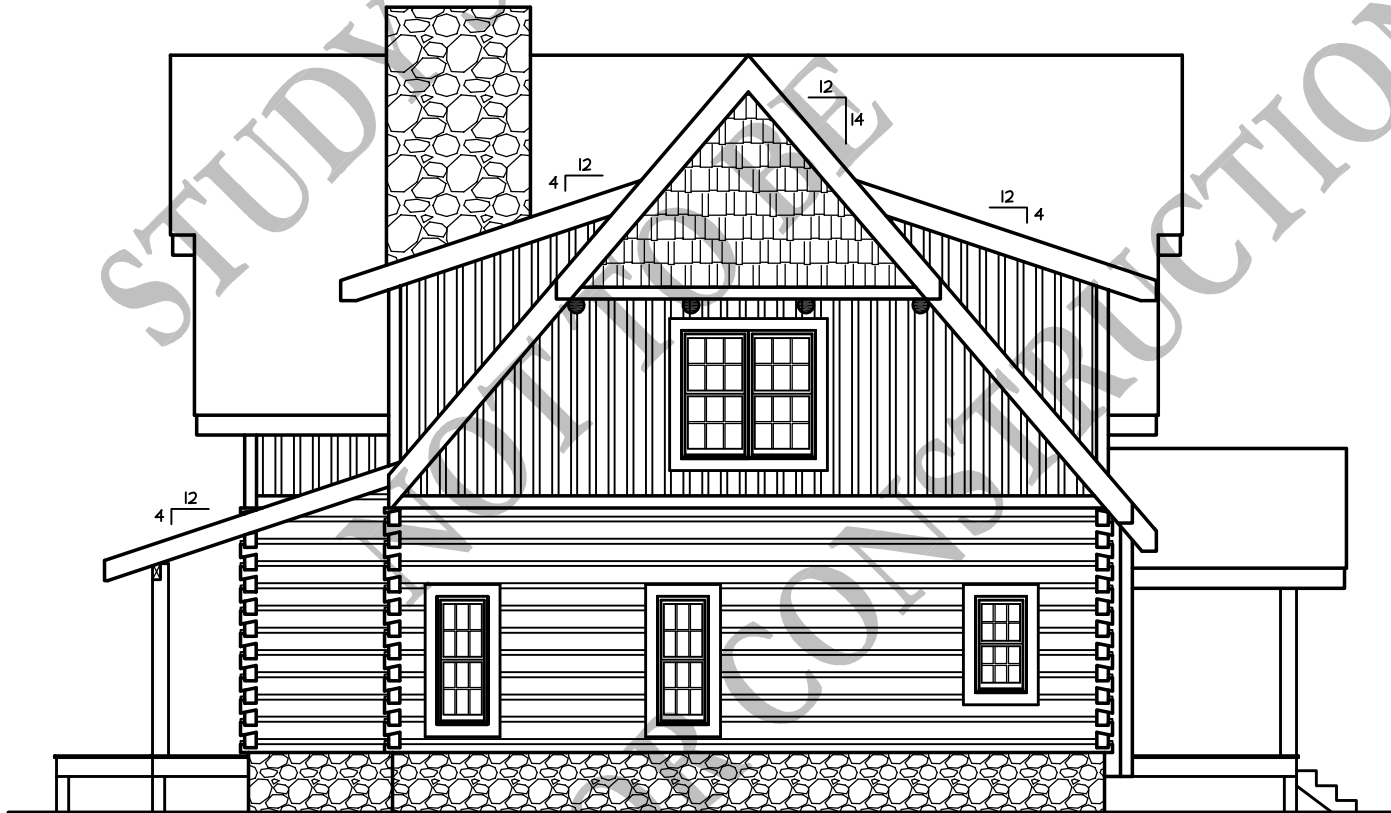
**RIGHT ELEVATION**

1/8" = 1'-0"

**BARNA**  
Log Homes  
of Georgia

**Smallmouth Lodge**  
(2,533 S.F.)

12/09/08



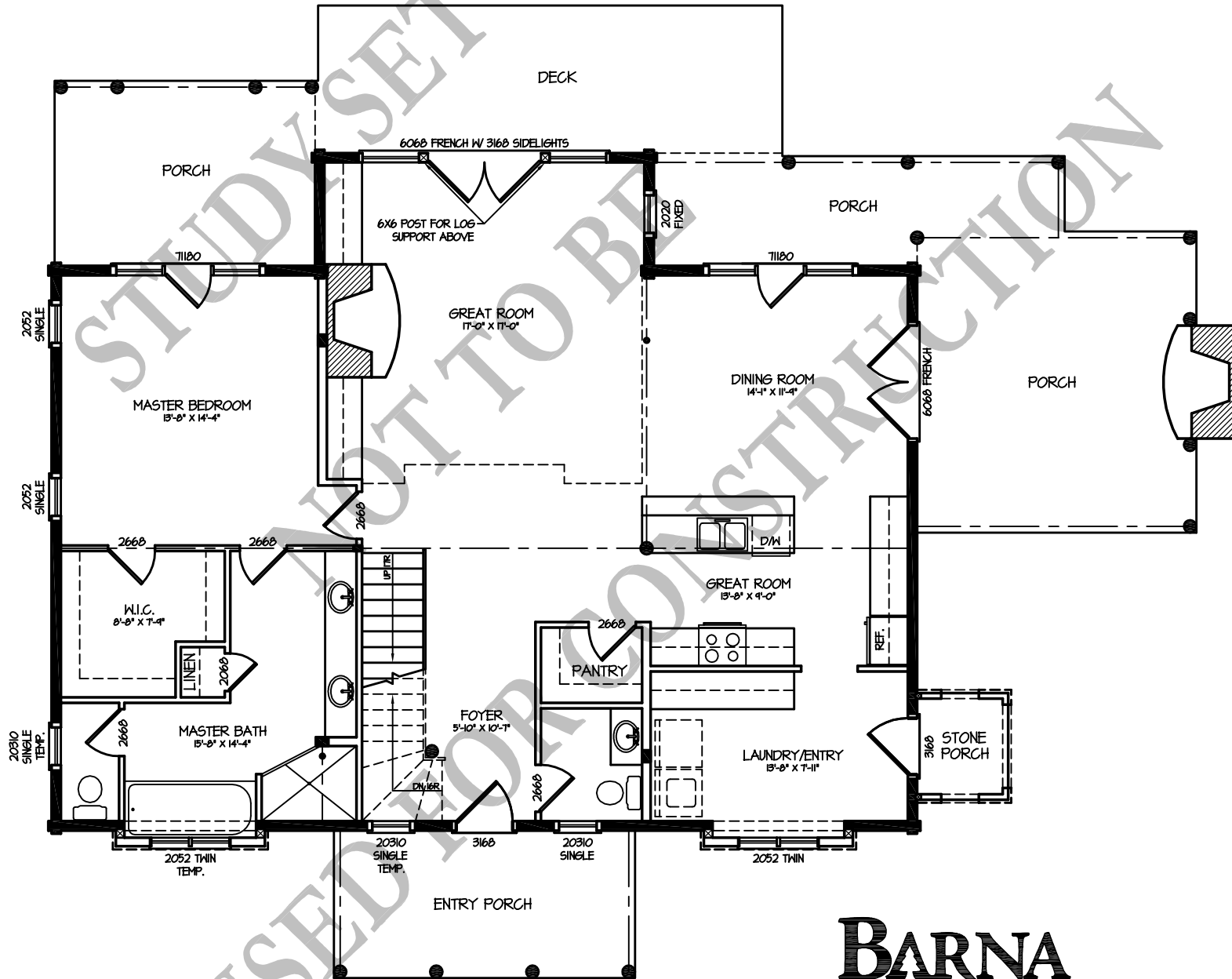
**LEFT ELEVATION**

1/8" = 1'-0"

**BARNA**  
**Log Homes**  
of Georgia

# Smallmouth Lodge

12/04/08



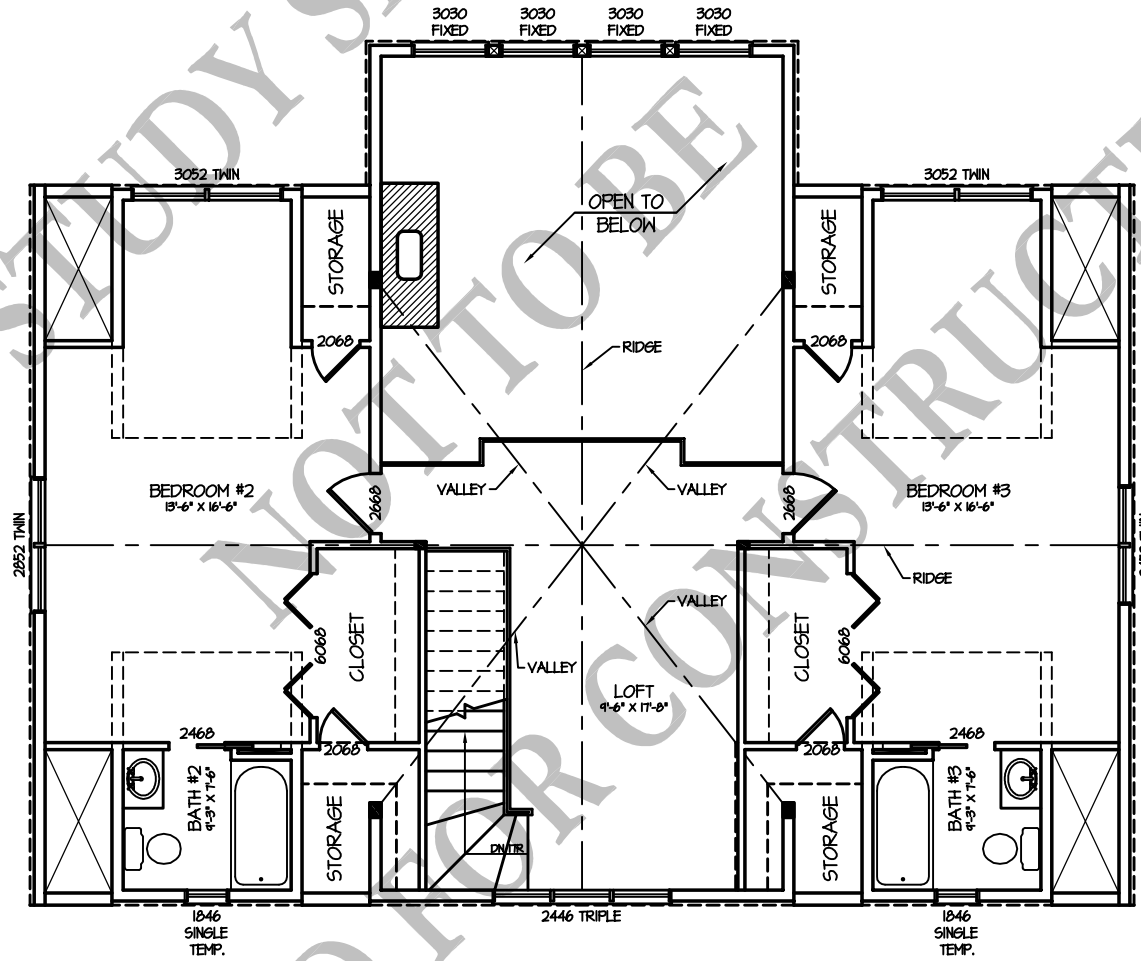
**1st FLOOR PLAN**  
(1,502 S.F.)

1/8" = 1'-0"

**BARNA**  
Log Homes  
of Georgia

# Smallmouth Lodge

12/09/08



**2nd FLOOR PLAN**  
(1,031 S.F.)

1/8" = 1'-0"

**BARNA**  
Log Homes  
of Georgia