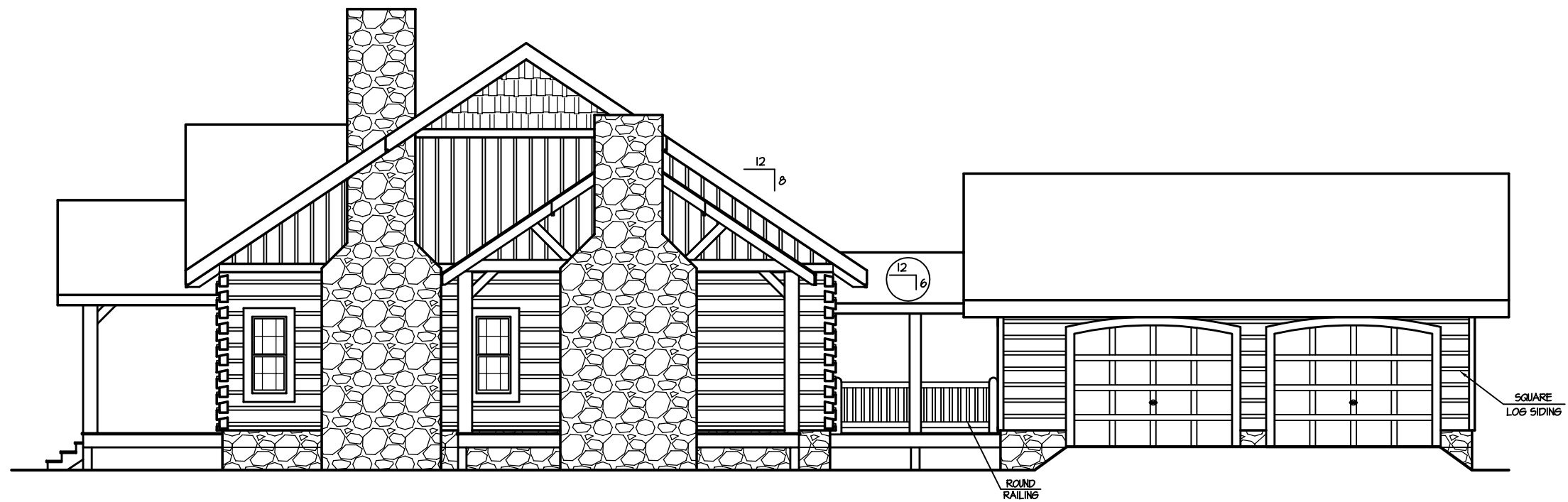


MALL TIE W/
KING POST

STEPS & RAILING
TO GRADE BY
OWNER

FRONT ELEVATION

1/4" = 1'-0"



12' 0"

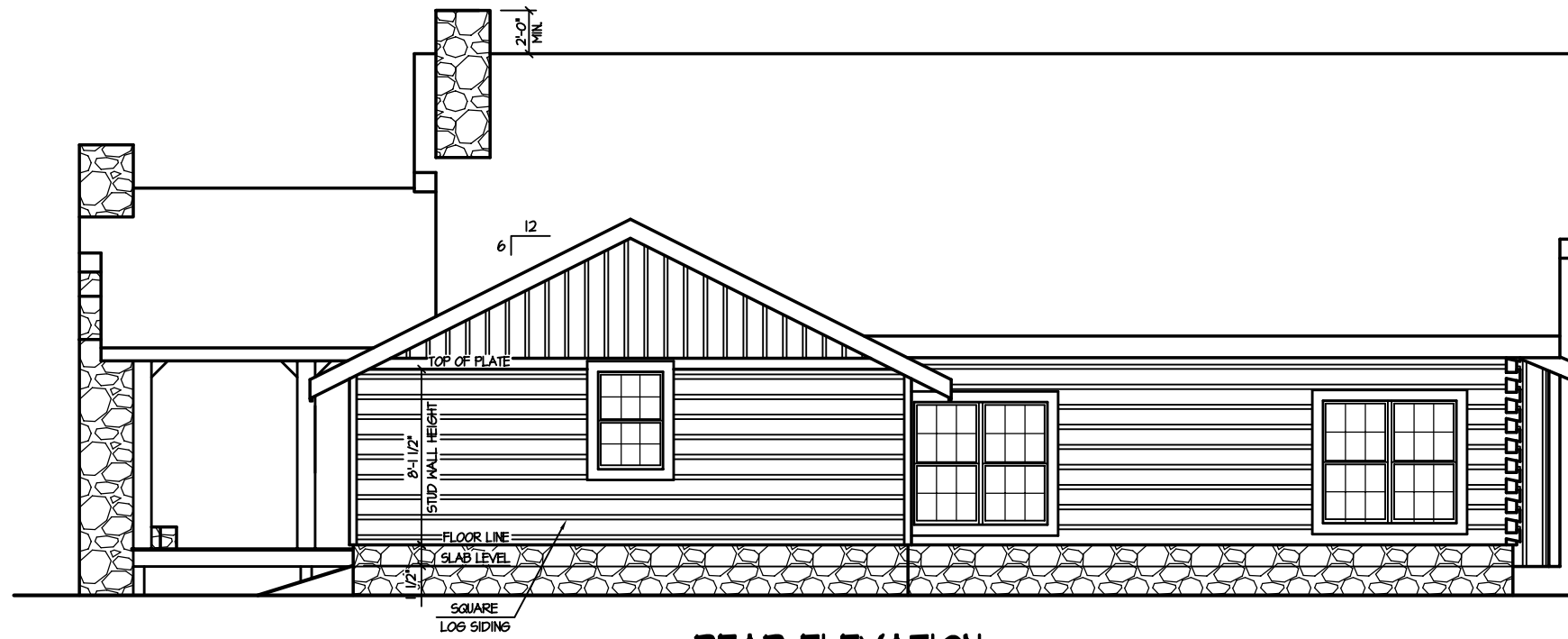
12' 0"

ROUND
RAILING

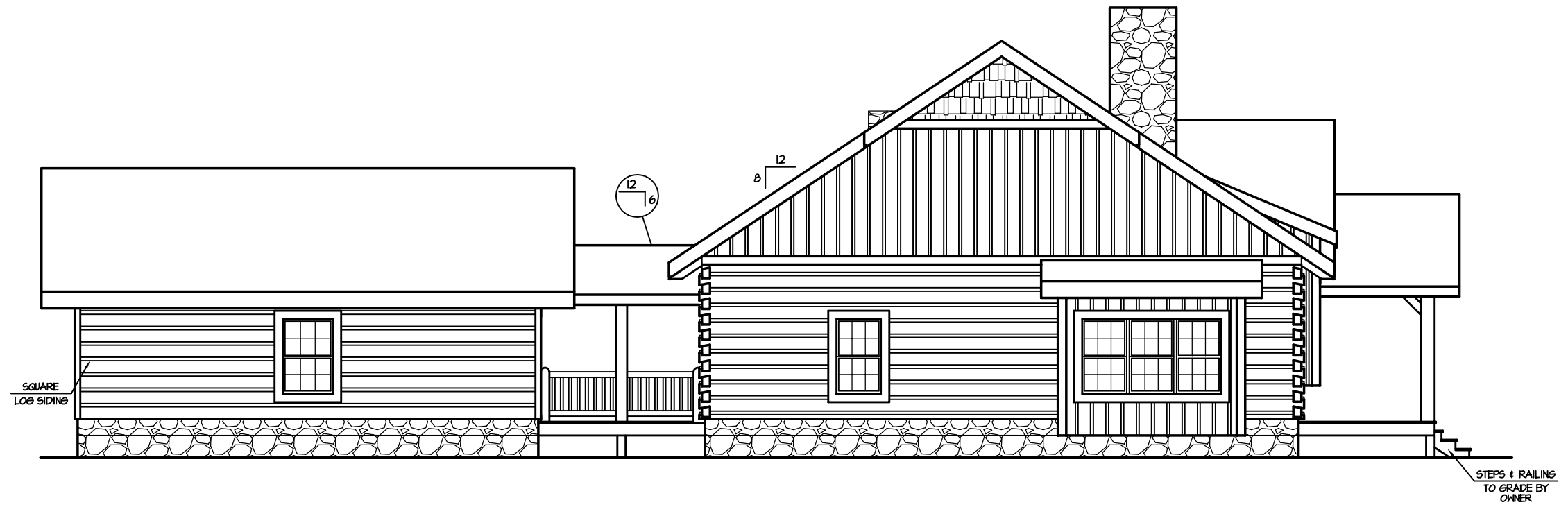
SQUARE
LOG SIDING

RIGHT ELEVATION

1/4" = 1'-0"



REAR ELEVATION $1/4" = 1'-0"$



LEFT ELEVATION $1/4" = 1'-0"$

