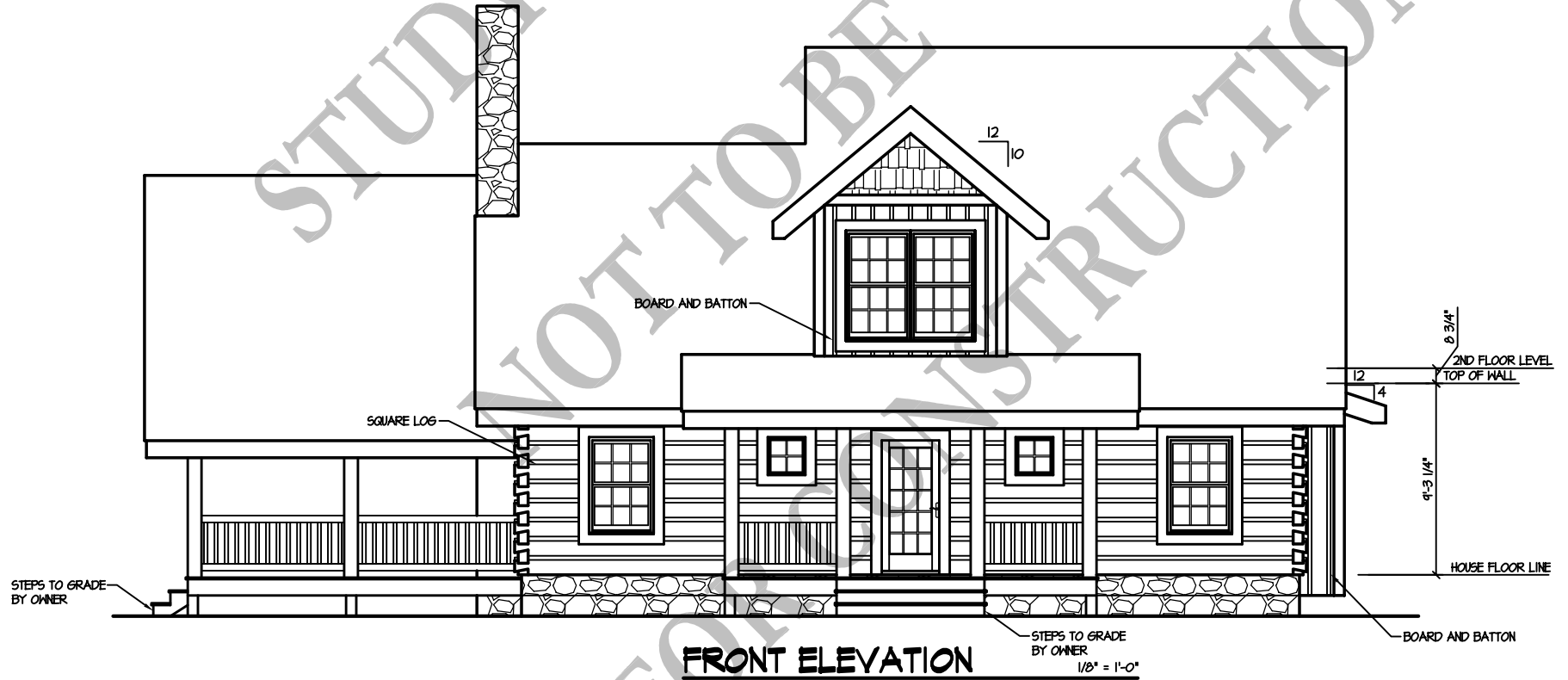


**Toccoa Cabin**  
(OPTION B) - (1,427 S.F.)

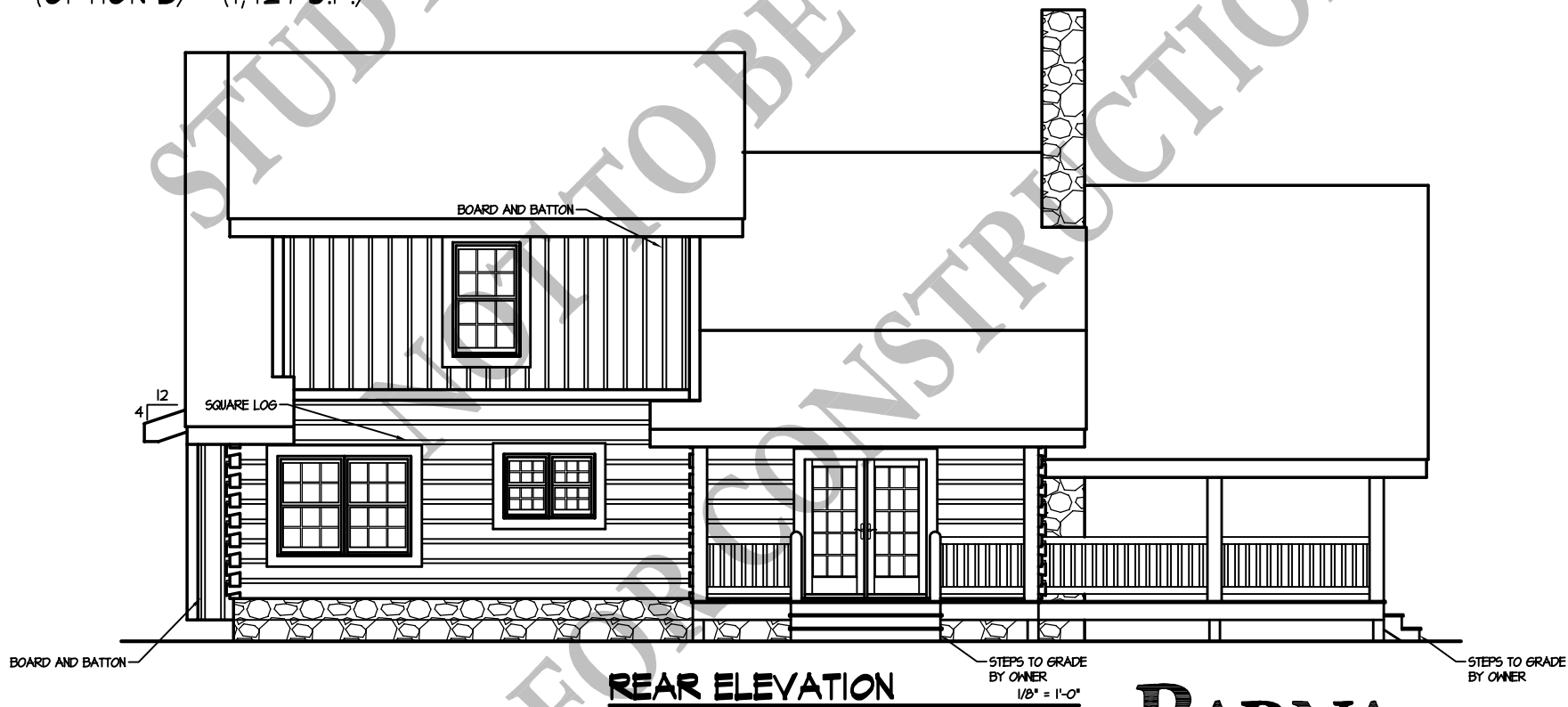
6/21/08



**BARNA**  
Log Homes  
of Georgia

**Toccoa Cabin**  
(OPTION B) - (1,427 S.F.)

6/21/08

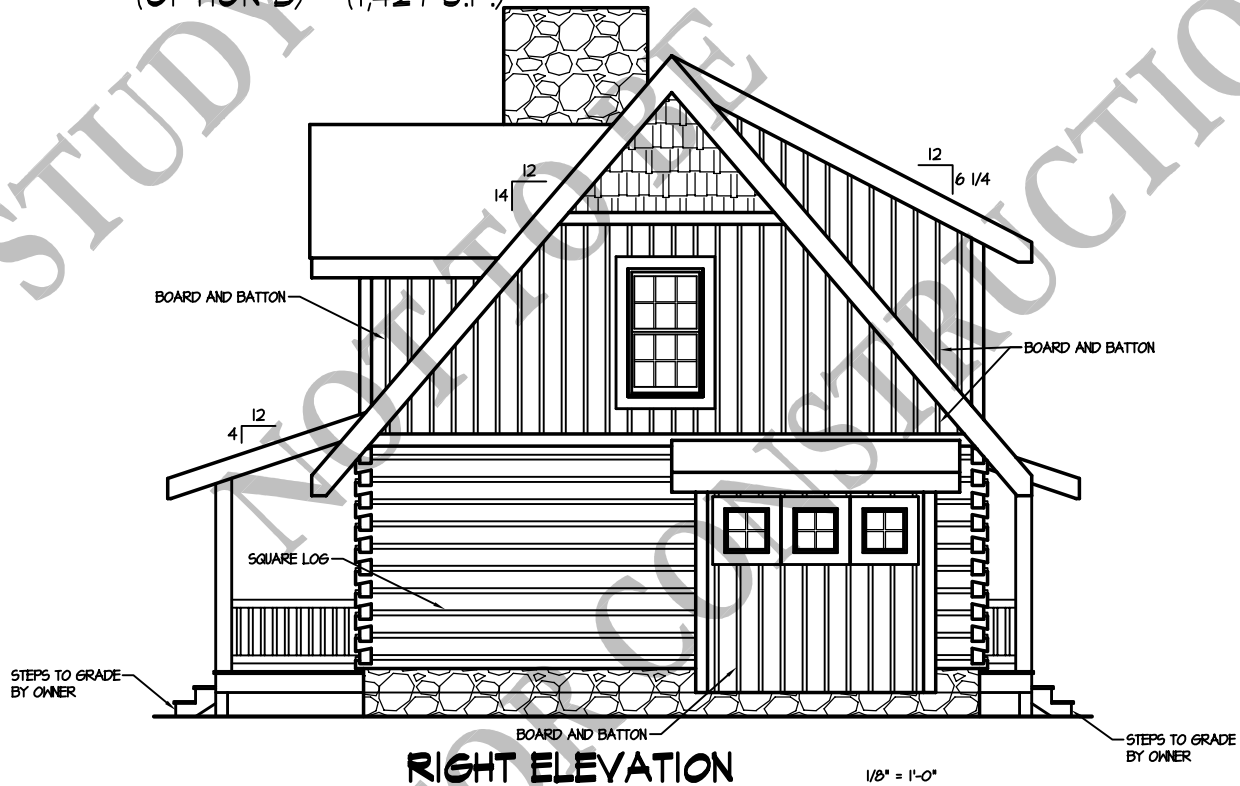


**REAR ELEVATION**

**BARNA**  
Log Homes  
of Georgia

**Toccoa Cabin**  
(OPTION B) - (1,427 S.F.)

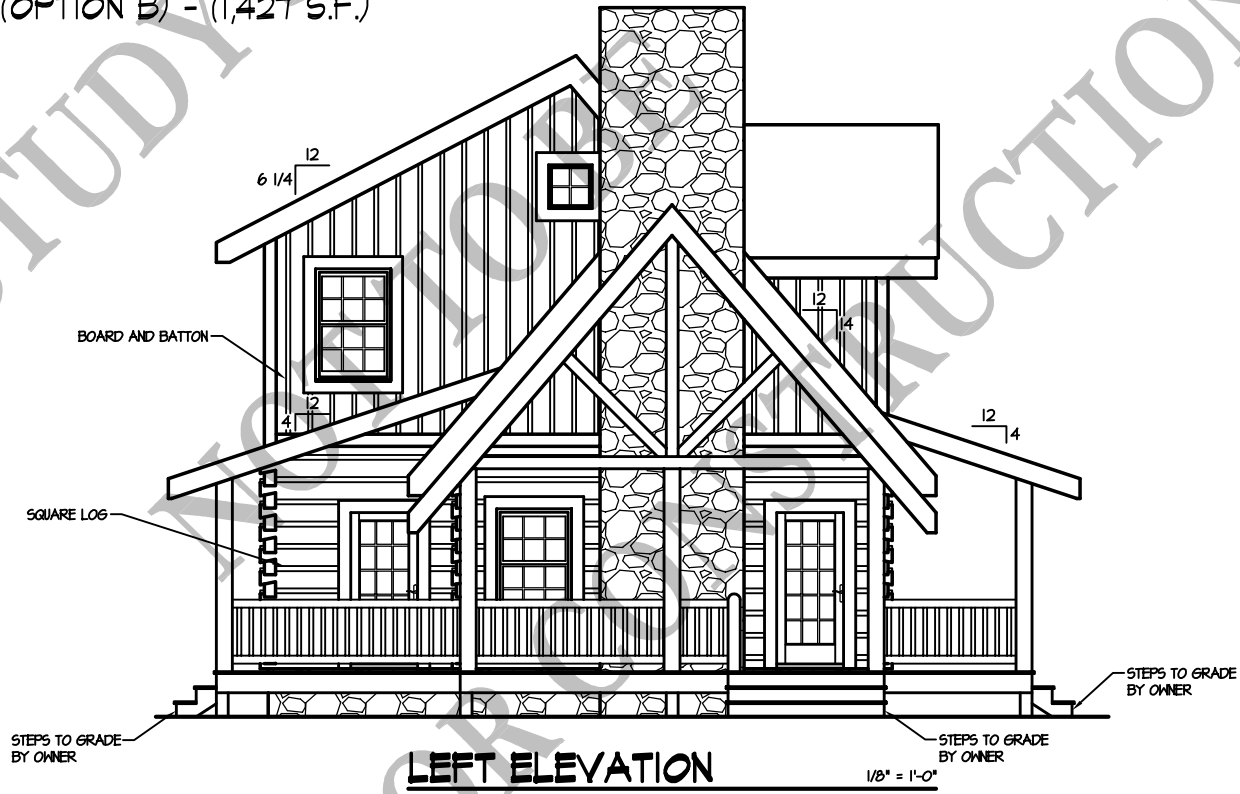
6/21/08



**BARNA**  
Log Homes  
of Georgia

**Toccoa Cabin**  
(OPTION B) - (1,421 S.F.)

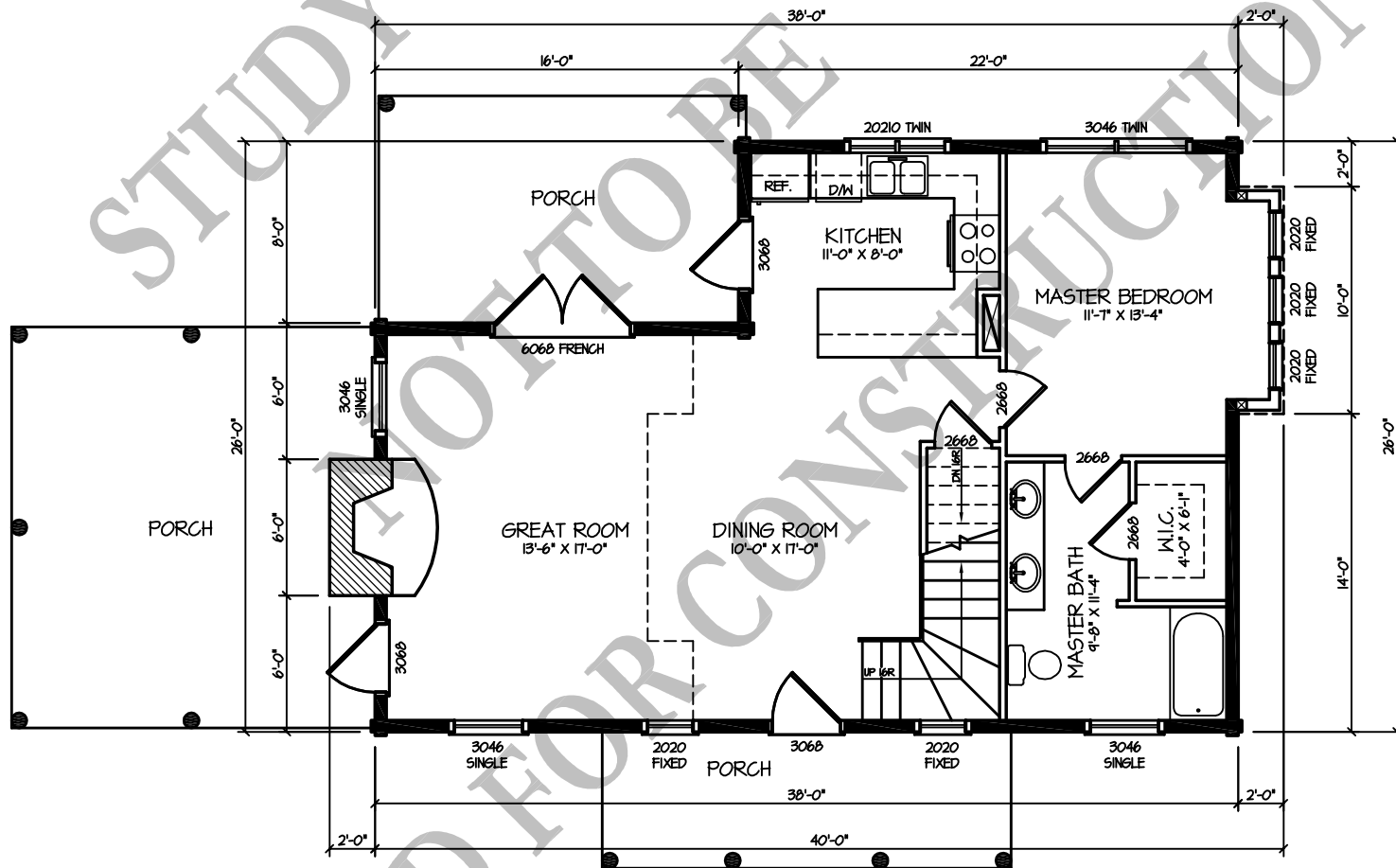
6/21/08



**BARNA**  
Log Homes  
of Georgia

# Toccoa Cabin

6/27/08



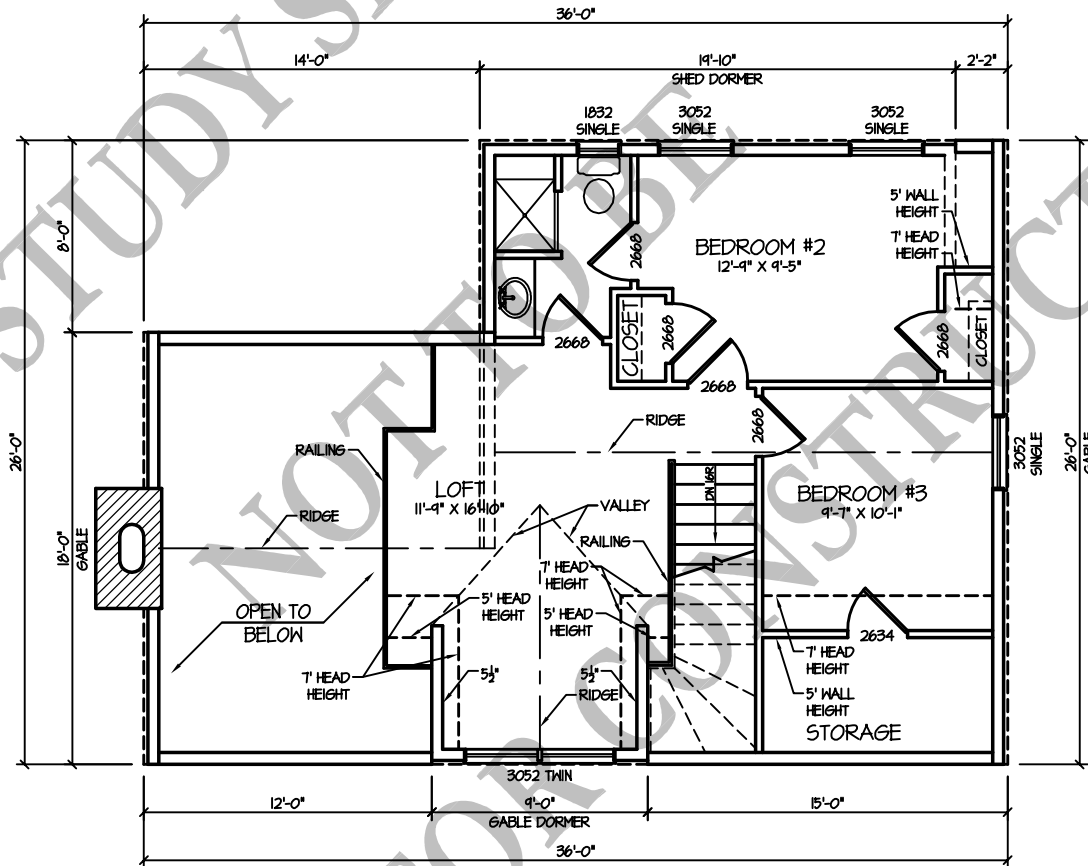
**1st FLOOR PLAN**  
(OPTION B) - (890 S.F.)

1/8" = 1'-0"

**BARNA**  
Log Homes  
of Georgia

# Toccoa Cabin

6/21/08



**2nd FLOOR PLAN**  
(OPTION B) - (537 S.F.)

1/8" = 1'-0"

**BARNA**  
Log Homes  
of Georgia