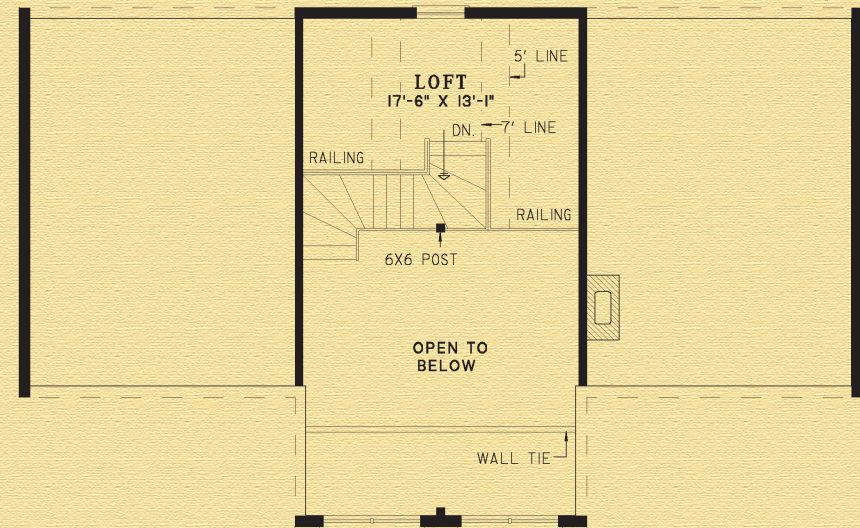
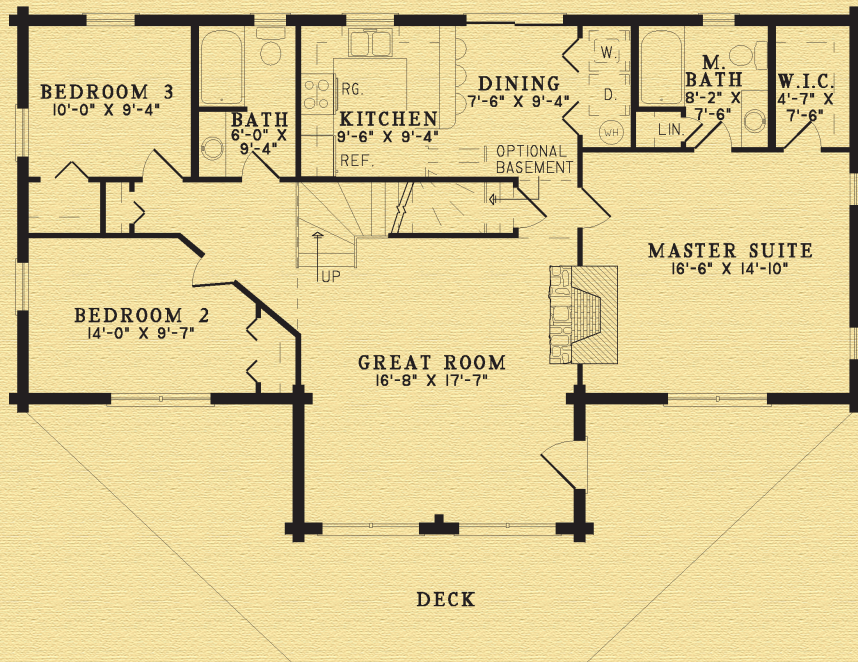
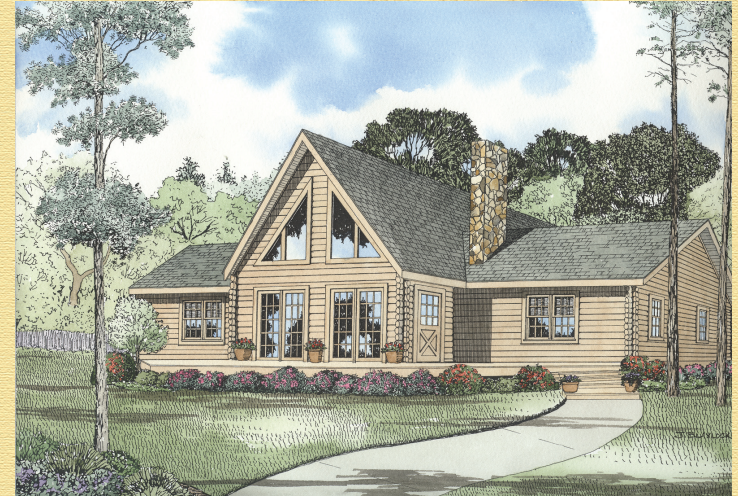


The Westwind I

Width: 52' 0"
Depth: 40' 0"
Main Floor: 1,392 sq. ft. (129 sq. meters)
Upper Floor: 110 sq. ft. (10 sq. meters)
Total Living: 1,502 sq. ft. (139 sq. meters)



Special Notes: Three full log gables and one partial log gable in Gold option. Two fixed door units included.

BARNA

Log Homes

The experience matters™