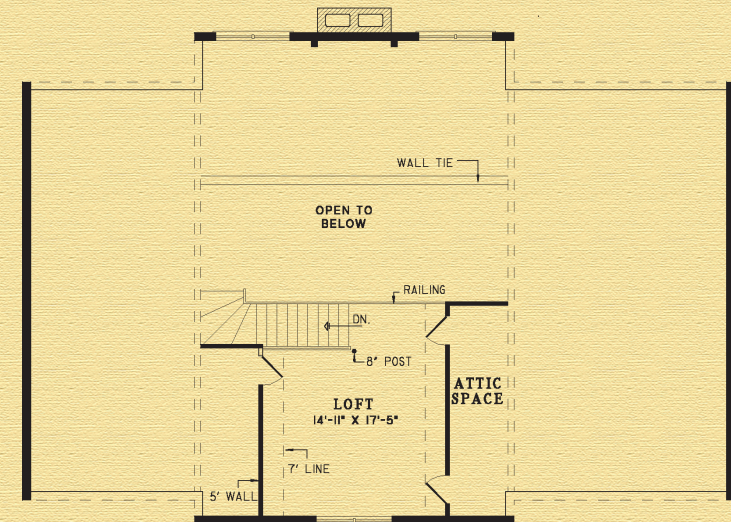
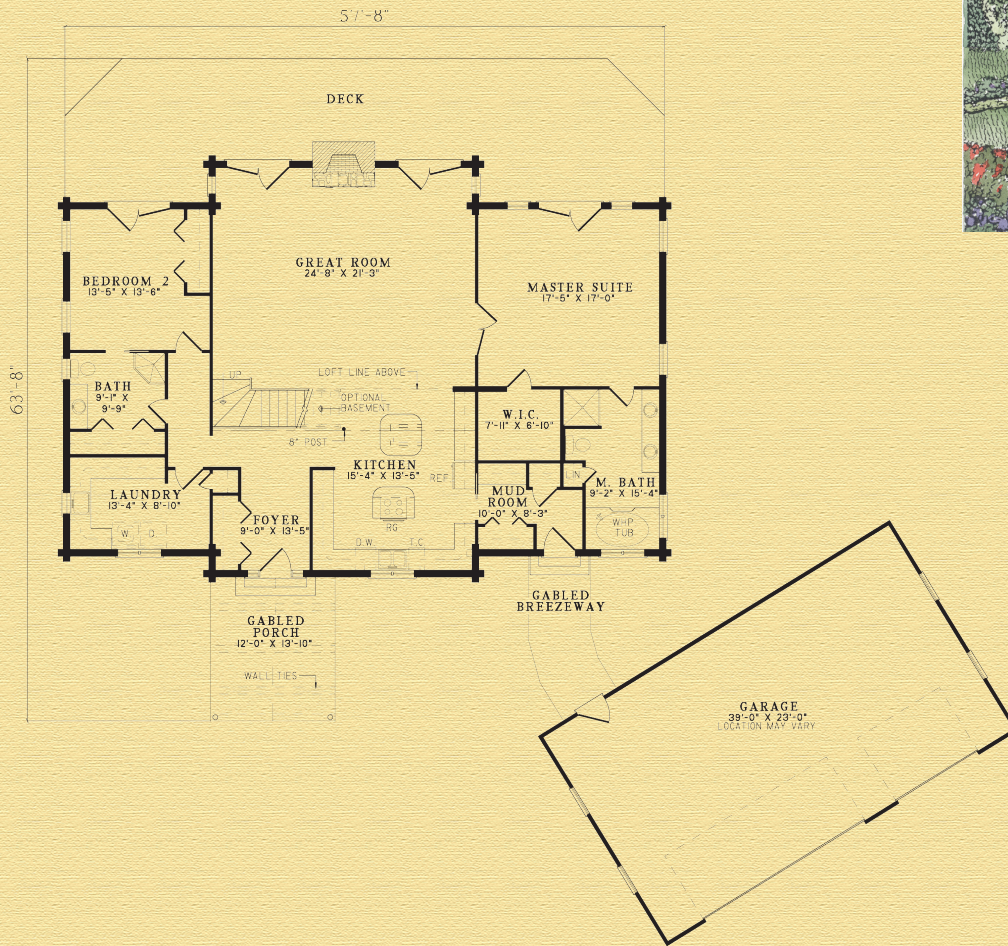


# The Windmere

Width: 57' 8"  
 Depth: 63' 8"  
 Main Floor: 2,128 sq. ft. (198 sq. meters)  
 Upper Floor: 274 sq. ft. (25 sq. meters)  
 Total Living: 2,402 sq. ft. (223 sq. meters)



Special Note: Has exterior log siding or half log for garage and garage gables.  
 The garage does not include a floor system above and the roof is not insulated and is trusses by others.

# BARNA

## Log Homes

*The experience matters™*